

**VIRGINIA STATE POLICE  
Help Eliminate Auto Theft  
(H.E.A.T.)  
Program**



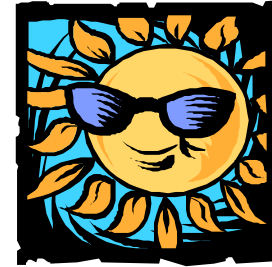
**Analysis of 2005  
Virginia Motor Vehicle Theft Statistics**

Prepared by



## HIGHLIGHTS

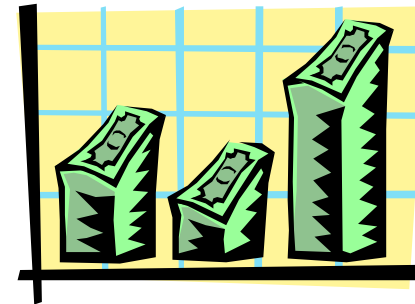
August and September were the leading months for auto theft in Virginia in 2005, with more than 19% of thefts occurring in these two months. In 2005, the greatest number of thefts occurred in the four-month period from July to October, with more than 38% of reported thefts during this time.



• Motor Vehicle Theft in Virginia increased from 15,022 offenses in 1987 to 21,284 offenses in 1991, a 42% increase. Since H.E.A.T. began in 1992, Motor Vehicle Thefts have decreased more than 25% compared to the base year of 1991.

Young people continue to make up a large portion of the arrests for Motor Vehicle Theft, with more than 40% of those arrested in 2005 in the 20 years old or younger age group.

The five-year average (2001-2005) value of reported Motor Vehicle Thefts each year in Virginia is \$105,404,348. The five-year average value per incident is \$6,028



Three areas of the state account for over 80% of the reported Motor Vehicle Thefts in Virginia: Tidewater - 35%; Northern Virginia - 25%; and Richmond - 23%.

Prior to 1999, crimes in Virginia were reported using the Summary System, which counts only the highest crime in an incident. In 1999, two methods were in place: the Summary System; and the Incident Based System (IBR), which counts all offenses in an incident, to a maximum of ten.

Beginning in 2000 and going forward, all information included in the *Crime in Virginia* reports are IBR data. Because of the change to the IBR System, it is impossible to compare some information to previous data. In some cases, 1999 data have been omitted from comparisons.

For more information and a further discussion of the two reporting systems, see the 1999 and 2000 editions of *Crime in Virginia*, which were compiled by the Uniform Crime Reporting Section of the Virginia Department of State Police.

The sources for all information in this analysis are the 1988 through 2005 editions of *Crime in Virginia*.

**INCIDENCE - VIRGINIA MOTOR VEHICLE THEFT**

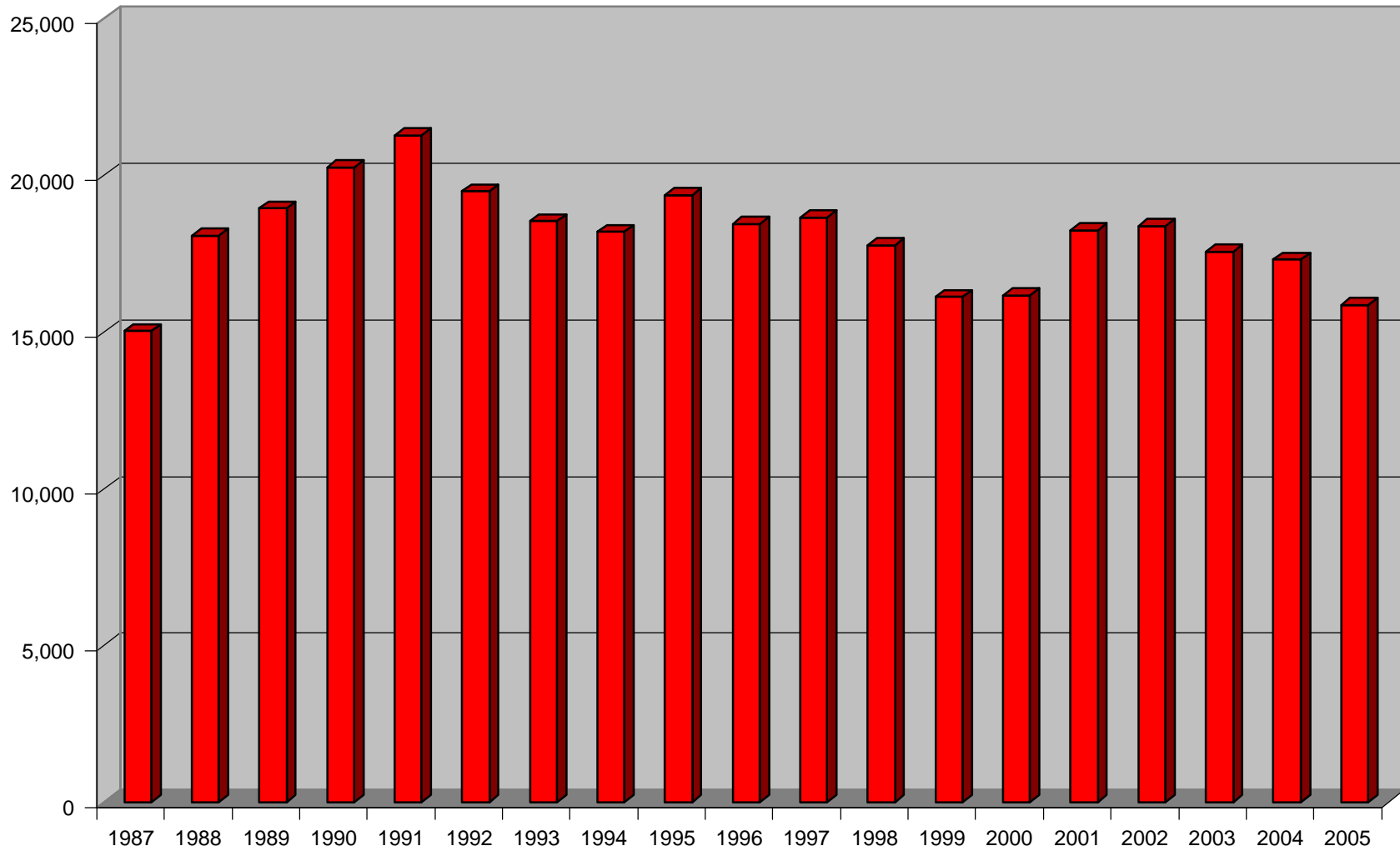
Year	1987	1988	1989	1990	1991	1992	1993	1994	1995	1996
Number Thefts	15,022	18,084	18,951	20,263	21,284	19,488	18,533	18,205	19,366	18,454
<b>Increase/Decrease</b>										
Year-to-Year		20.38%	4.79%	6.92%	5.04%	-8.44%	-4.90%	-1.77%	6.38%	-4.71%
Since 1991						-8.44%	-12.93%	-14.47%	-9.01%	-13.30%

	1997	1998	1999	2000	2001	2002	2003	2004	2005
Number Thefts	18,663	17,769	16,120	16,172	18,257	18,388	17,566	17,309	15,864
<b>Increase/Decrease</b>									
Year-to-Year	1.13%	-4.79%	-9.28%	0.32%	12.89%	0.72%	-4.47%	-1.46%	-8.35%
Since 1991	-12.31%	-16.51%	-24.26%	-24.02%	-14.22%	-13.61%	-17.47%	-18.68%	-25.47%

Motor Vehicle Theft in Virginia increased from 15,022 offenses in 1987 to 21,284 offenses in 1991, a 42% increase. Since H.E.A.T. began in 1992, Motor Vehicle Thefts have decreased 25.47% as compared to the base year of 1991. Motor Vehicle Thefts have decreased in nine of the fourteen years the H.E.A.T. Program has been in existence, and thefts have never risen above the peak year of 1991 or the previous year.

In 2005, there were 15,864 reported thefts, a decrease from the previous year of 1,445 thefts (8.35%). This is the first time in eighteen years (since 1987) that motor vehicle thefts in the state of Virginia have been less than 16,000.

Virginia Motor Vehicle Thefts



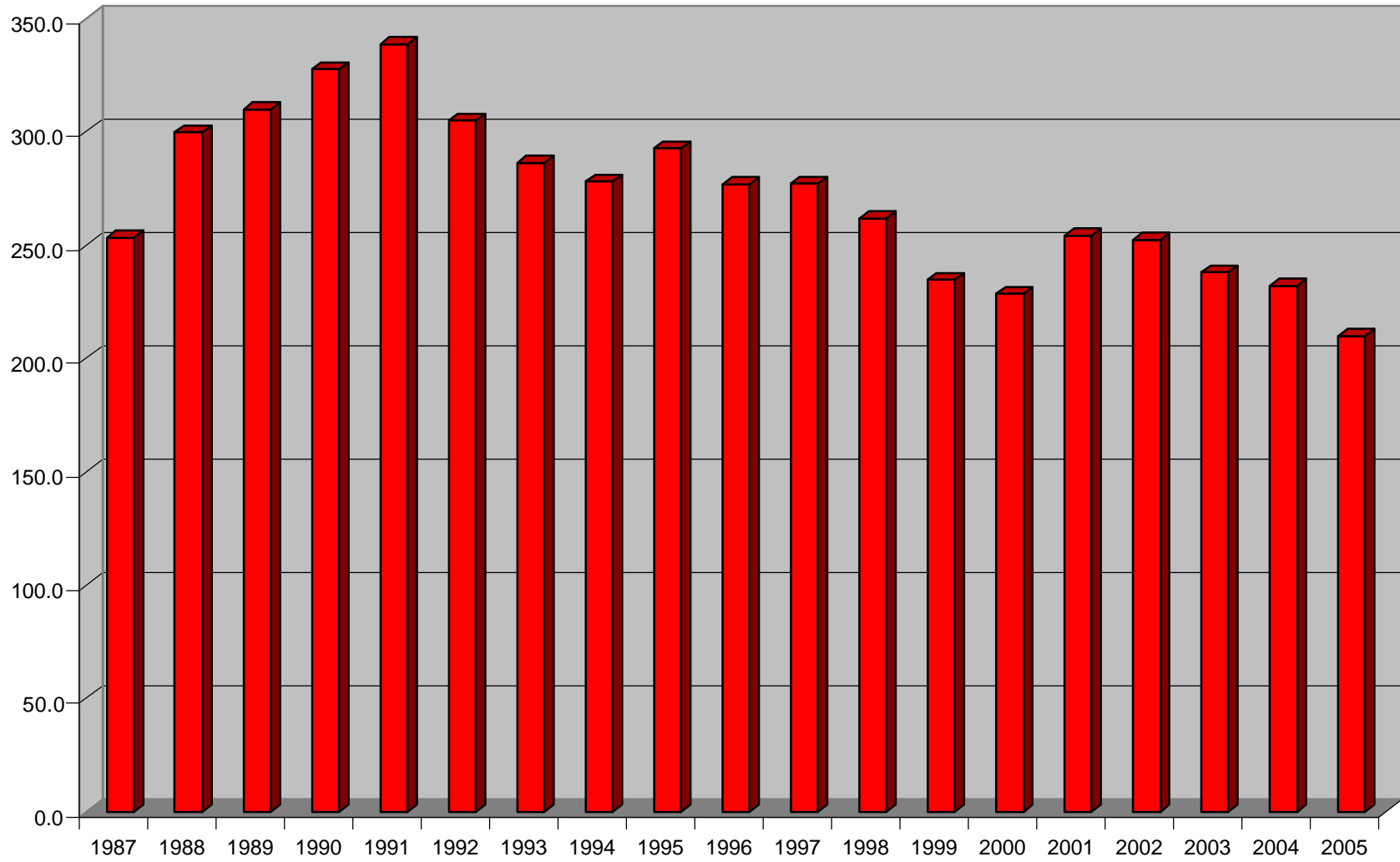
**VIRGINIA VEHICLE THEFT RATE (Number of Thefts per 100,000 residents)**

Year	Population	Vehicle Theft	Vehicle Theft Rate	% Inc (Dec)	% Inc (Dec)
1987	5,932,300	15,022	253.2		Since 1991
1988	6,036,900	18,084	299.6	18.30%	
1989	6,120,200	18,951	309.6	3.37%	
1990	6,187,358	20,263	327.5	5.76%	
1991	6,288,000	21,284	338.5	3.36%	
1992	6,394,500	19,488	304.8	-9.96%	-9.96%
1993	6,473,000	18,533	286.3	-6.05%	-15.41%
1994	6,551,400	18,205	277.9	-2.95%	-17.91%
1995	6,617,400	19,366	292.7	5.32%	-13.54%
1996	6,666,200	18,454	276.8	-5.41%	-18.22%
1997	6,737,500	18,663	277.0	0.06%	-18.16%
1998	6,789,200	17,769	261.7	-5.52%	-22.68%
1999	6,872,900	16,120	234.5	-10.39%	-30.71%
2000	7,078,515	16,172	228.5	-2.59%	-32.50%
2001	7,187,734	18,257	254.0	11.18%	-24.96%
2002	7,293,542	18,388	252.1	-0.74%	-25.52%
2003	7,386,300	17,566	237.8	-5.67%	-29.74%
2004	7,459,827	17,309	232.0	-2.43%	-31.45%
2005	7,567,465	15,864	209.6	-9.65%	-38.07%

The Motor Vehicle Theft Rate (number of thefts per 100,000 residents) in Virginia increased from 253.2 in 1987 to 338.5 in 1991, a 34% increase. Since H.E.A.T. began in 1992, the Motor Vehicle Theft rate has decreased 38.07% as compared to the base year of 1991. The rate has decreased in eleven of the fourteen years the H.E.A.T. Program has been in existence and has never risen above the peak year of 1991 or the two previous years.

In 2005, the rate was 209.6, a decrease of 9.65% from the previous year.

Virginia Motor Vehicle Theft Rate



## Analysis of 2005 Virginia Motor Vehicle Theft Statistics

### INCIDENCE - VIRGINIA CRIME INDEX OFFENSES

	1987	1988	1989	1990	1991	1992	1993	1994	1995	1996	1997	1998	1999
Murder	437	468	480	545	584	563	539	570	501	496	484	407	346
Forcible Rape <sup>1</sup>	1,537	1,622	1,637	1,915	1,879	2,008	2,084	1,862	1,794	1,763	1,774	1,675	1,566
Robbery	6,244	6,748	6,494	7,626	8,651	8,787	9,216	8,680	8,717	8,145	8,336	7,023	6,165
Agg. Assault	9,196	9,102	10,451	11,621	12,345	12,548	12,322	12,464	12,917	12,236	12,457	12,322	11,578
Burglary	47,642	49,069	46,149	45,236	49,224	45,217	43,338	41,863	39,427	38,868	37,875	36,478	29,780
Larceny	153,690	165,343	172,640	187,564	195,652	185,506	181,104	180,789	181,306	183,243	178,898	165,268	157,758
M.V.Theft	15,022	18,084	18,951	20,263	21,284	19,488	18,533	18,205	19,366	18,454	18,663	17,769	16,120
Total	233,768	250,436	256,802	274,770	289,619	274,117	267,136	264,433	264,028	263,205	258,487	240,942	223,313
Increase/Decrease													
M.V. Theft		20.38%	4.79%	6.92%	5.04%	-8.44%	-4.90%	-1.77%	6.38%	-4.71%	1.13%	-4.79%	-9.28%
Crime Index		7.13%	2.54%	7.00%	5.40%	-5.35%	-2.55%	-1.01%	-0.15%	-0.31%	-1.79%	-6.79%	-7.32%

	2000	2001	2002	2003	2004	2005
Murder	363	355	379	408	392	432
Forcible Rape	4,437	5,039	5,258	5,205	5,187	1,676
Robbery	5,741	6,609	6,865	6,576	6,908	7,486
Agg. Assault	9,487	11,345	11,677	11,143	11,312	10,189
Burglary	27,154	29,978	30,671	27,997	27,883	29,145
Larceny	149,936	169,460	175,997	165,177	157,060	156,038
M.V.Theft	16,172	18,257	18,388	17,566	17,309	15,864
Total	213,290	241,043	249,235	234,072	226,051	220,830
Increase/Decrease						
M.V. Theft	0.32%	12.89%	0.72%	-4.47%	-1.46%	-8.35%
Crime Index	-4.49%	13.01%	3.40%	-6.08%	-3.43%	-2.31%

The Crime Index decreased in 2005, with 220,830 reported offenses as compared to the 226,051 offenses in 2004. This was a 2.31% decrease, which was less than the 8.35% decrease in Motor Vehicle Thefts.



<sup>1</sup>Data for 2000 forward are for Forcible Sex Offenses.

**CLEARANCE RATE - VIRGINIA MOTOR VEHICLE THEFT**

	1988	1989	1990	1991	1992	1993	1994	1995	1996	1997	1998
Motor Vehicle Theft	31.4%	32.5%	29.6%	27.9%	30.5%	28.9%	29.4%	27.3%	27.8%	24.1%	23.7%
Crime Index	26.6%	27.8%	26.4%	26.2%	27.7%	26.1%	25.6%	25.2%	25.3%	24.2%	24.6%

Clearance Rate information has not been included in *Crime in Virginia* since the 1999 edition. The 2002 edition notes: “This report no longer publishes clearance rates. The IBR system does not accurately reflect the volume of clearances each department produces in a given year. Additionally, the number of arrests in a jurisdiction does not provide offense clearance information in that one person arrested could clear a number of different offenses.”

**SEASONALITY - VIRGINIA MOTOR VEHICLE THEFT**

Mon	1988	1989	1990	1991	1992	1993	1994	1995	1996	1997	1998	2000	2001	2002	2003	2004	2005	5 Yr. Avg.	% of Total
Aug	1,898	1,887	2,084	1,952	1,940	1,975	1,793	1,887	1,839	1,796	1,672	1,596	2,004	1,653	1,734	1,676	1,586	1,731	9.90%
Jul	1,650	1,916	1,925	2,067	1,785	1,669	1,744	1,922	1,820	1,719	1,589	1,439	1,736	1,785	1,705	1,639	1,543	1,682	9.62%
Oct	1,716	1,705	1,885	1,890	1,599	1,648	1,437	1,641	1,670	1,721	1,612	1,343	1,829	1,528	1,494	1,454	1,406	1,542	8.82%
Jun	1,445	1,583	1,586	1,792	1,414	1,556	1,591	1,682	1,554	1,577	1,537	1,360	1,596	1,645	1,417	1,547	1,349	1,511	8.64%
May	1,344	1,507	1,464	1,609	1,652	1,459	1,542	1,507	1,409	1,460	1,459	1,436	1,465	1,621	1,438	1,510	1,265	1,460	8.35%
Sep	1,674	1,659	1,784	1,796	1,618	1,757	1,434	1,652	1,639	1,654	1,598	1,326	1,611	1,543	1,500	1,386	1,569	1,522	8.71%
Jan	1,568	1,581	1,726	1,862	1,631	1,702	1,434	1,520	1,501	1,574	1,487	1,465	1,338	1,548	1,445	1,444	1,239	1,403	8.03%
Nov	1,483	1,570	1,724	1,803	1,723	1,548	1,471	1,409	1,480	1,615	1,408	1,257	1,562	1,415	1,453	1,297	1,275	1,400	8.01%
Mar	1,209	1,418	1,496	1,704	1,490	1,245	1,508	1,649	1,491	1,404	1,367	1,208	1,344	1,505	1,478	1,387	1,182	1,379	7.89%
Apr	1,235	1,284	1,436	1,453	1,411	1,325	1,497	1,435	1,265	1,397	1,422	1,282	1,315	1,580	1,352	1,328	1,201	1,355	7.75%
Dec	1,532	1,573	1,730	1,855	1,728	1,365	1,509	1,565	1,441	1,437	1,406	1,194	1,388	1,376	1,376	1,241	1,249	1,326	7.59%
Feb	1,330	1,268	1,423	1,501	1,497	1,284	1,245	1,497	1,345	1,309	1,212	1,266	1,069	1,189	1,174	1,400	1,000	1,166	6.67%
Tot	18,084	18,951	20,263	21,284	19,488	18,533	18,205	19,366	18,454	18,663	17,769	16,172	18,257	18,388	17,566	17,309	15,864	17,477	100.00%

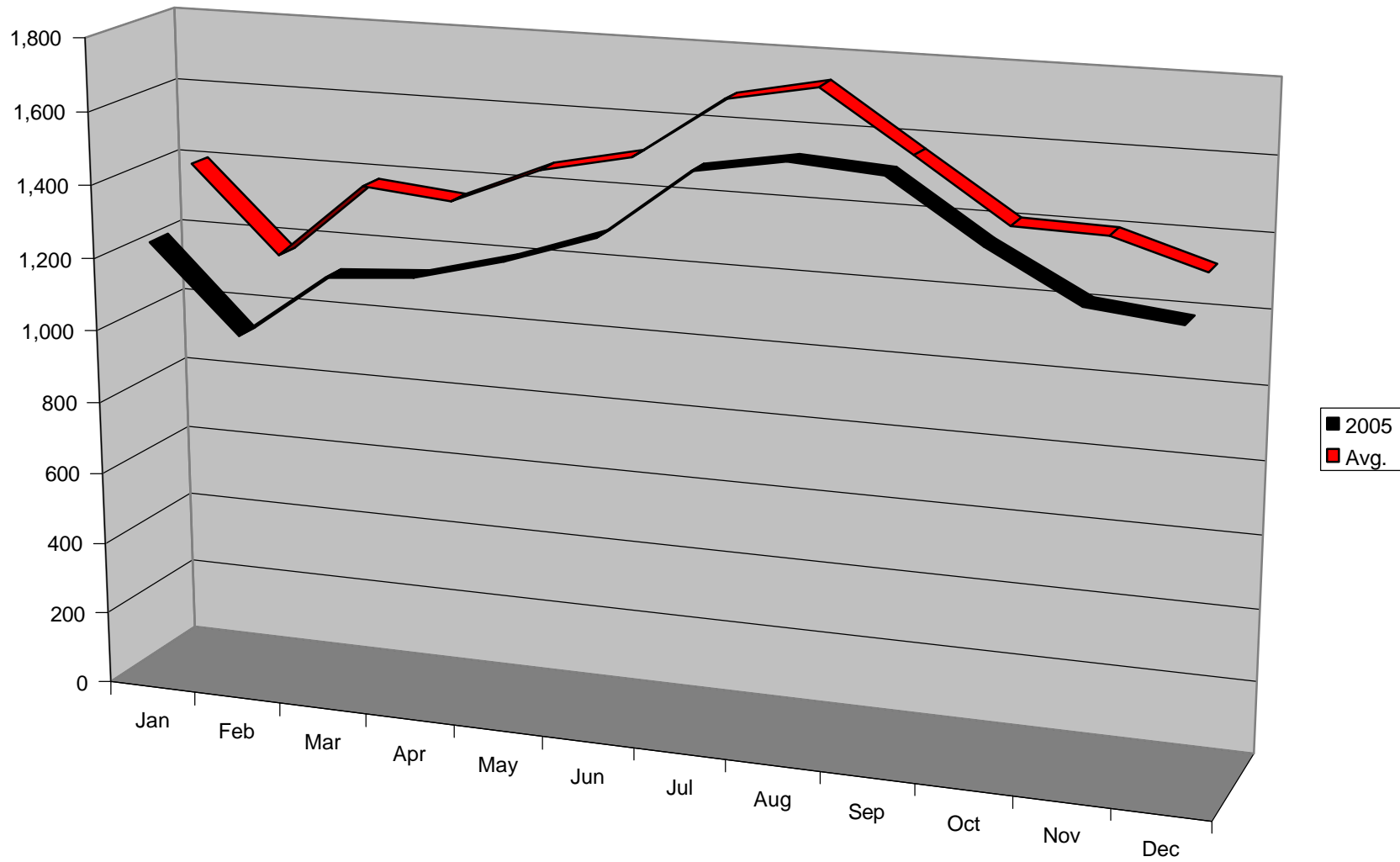
In 2005, August and September were the leading months for Motor Vehicle Theft, with more than 19% (19.88%) of reported thefts in this two-month period. To place these figures in perspective, these two months represent about 17% of the year (62 days divided by 365 days equals 16.99%). August was the highest month with 1,586 thefts.

In 2005, the greatest number of Motor Vehicle Thefts occurred in the four-month period from July to October, with more than 38% (38.47%) of reported thefts during this time. To place these figures in perspective, these four months represent about 34% of the year (123 days divided by 365 equals 33.70%).

The 2005 experience is slightly different from past years. As noted above, in 2005, August and September had the greatest number of thefts, which is different than the past five years average (2001-2005) when August and July were the two highest months. On average, August was the highest month with 1,731 thefts as is the case in 2005 with 1,586 thefts. On average, July was second with 1,682 thefts, while in 2005, September was second with 1,569 thefts.

*Note: 1999 data omitted in order to make comparisons more relevant.*

Virginia Motor Vehicle Thefts by Month



**AGE OF OFFENDERS - VIRGINIA MOTOR VEHICLE THEFT ARRESTS**

Age	1987	1988	1989	1990	1991	1992	1993	1994	1995	1996	1997	1998	1999	2000	2001	2002	2003	2004	2005	Avg.	% of Total	Cum.
12 & under	43	57	65	66	90	77	58	82	63	50	41	28	35	13	17	12	10	11	7	43	1.5%	1.5%
13 - 17	985	1,556	1,733	1,794	1,788	1,687	1,587	1,686	1,547	1,342	1,407	1,117	673	485	495	485	383	405	346	1,132	40.1%	41.7%
18 - 20	519	654	725	644	696	569	511	531	523	506	427	445	305	321	316	309	269	273	242	462	16.4%	58.1%
21 - 24	449	537	540	491	456	448	403	374	367	359	248	318	153	193	168	169	193	184	187	328	11.6%	69.7%
25 - 29	326	389	466	403	389	357	410	413	380	390	286	284	180	148	144	148	126	136	154	291	10.3%	80.0%
30 - 34	178	236	292	255	304	233	290	332	335	338	297	321	170	186	161	136	136	126	125	234	8.3%	88.4%
35 - 39	115	167	154	124	147	173	179	191	182	221	212	262	142	146	126	136	114	136	129	161	5.7%	94.1%
40 & over	131	161	166	125	162	147	145	183	197	208	192	238	133	139	151	163	168	174	199	167	5.9%	100.0%
<b>TOTAL</b>	<b>2,746</b>	<b>3,757</b>	<b>4,141</b>	<b>3,902</b>	<b>4,032</b>	<b>3,691</b>	<b>3,583</b>	<b>3,792</b>	<b>3,594</b>	<b>3,414</b>	<b>3,110</b>	<b>3,013</b>	<b>1,791</b>	<b>1,631</b>	<b>1,578</b>	<b>1,558</b>	<b>1,399</b>	<b>1,445</b>	<b>1,389</b>	<b>2,819</b>	<b>100.0%</b>	

Age	1987	1988	1989	1990	1991	1992	1993	1994	1995	1996	1997	1998	1999	2000	2001	2002	2003	2004	2005	Total	% of Total
20 & under	1,547	2,267	2,523	2,504	2,574	2,333	2,156	2,299	2,133	1,898	1,875	1,590	1,013	819	828	806	662	689	595	30,516	58.5%
% of Total	56.3%	60.3%	60.9%	64.2%	63.8%	63.2%	60.2%	60.6%	59.4%	55.6%	60.3%	52.8%	56.6%	50.2%	52.5%	51.7%	47.7%	47.7%	42.8%	58.5%	
21 & over	1,199	1,490	1,618	1,398	1,458	1,358	1,427	1,493	1,460	1,516	1,235	1,423	778	812	750	752	727	756	794	21,650	41.5%
% of Total	43.7%	39.7%	39.1%	35.8%	36.2%	36.8%	39.8%	39.4%	40.6%	44.4%	39.7%	47.2%	43.4%	49.8%	47.5%	48.3%	52.3%	52.3%	57.2%	41.5%	
<b>Total</b>	<b>2,746</b>	<b>3,757</b>	<b>4,141</b>	<b>3,902</b>	<b>4,032</b>	<b>3,691</b>	<b>3,583</b>	<b>3,792</b>	<b>3,593</b>	<b>3,414</b>	<b>3,110</b>	<b>3,013</b>	<b>1,791</b>	<b>1,631</b>	<b>1,578</b>	<b>1,558</b>	<b>1,389</b>	<b>1,445</b>	<b>1,389</b>	<b>52,166</b>	<b>100.0%</b>

Age	1987	1988	1989	1990	1991	1992	1993	1994	1995	1996	1997	1998	1999	2000	2001	2002	2003	2004	2005	Total	% of Total
20 & under	1,547	2,267	2,523	2,504	2,574	2,333	2,156	2,299	2,133	1,898	1,875	1,590	1,013	819	828	806	662	689	595	30,516	58.5%
% Inc(Dec)		46.54%	11.29%	-0.75%	2.80%	-9.36%	-7.59%	6.63%	-7.22%	-11.0%	-1.2%	-15.2%	-36.3%	-19.2%	1.1%	-2.7%	-17.9%	4.1%	-13.6%		
21 & over	1,199	1,490	1,618	1,398	1,458	1,358	1,427	1,493	1,460	1,516	1,235	1,423	778	812	750	752	727	756	794	21,650	41.5%
% Inc(Dec)		24.27%	8.59%	-13.60%	4.29%	-6.86%	5.08%	4.63%	-2.21%	3.8%	-18.5%	15.2%	-45.3%	4.4%	-7.6%	0.3%	-3.3%	4.0%	5.0%		
<b>Total</b>	<b>2,746</b>	<b>3,757</b>	<b>4,141</b>	<b>3,902</b>	<b>4,032</b>	<b>3,691</b>	<b>3,583</b>	<b>3,792</b>	<b>3,593</b>	<b>3,414</b>	<b>3,110</b>	<b>3,013</b>	<b>1,791</b>	<b>1,631</b>	<b>1,578</b>	<b>1,558</b>	<b>1,389</b>	<b>1,445</b>	<b>1,389</b>	<b>52,166</b>	<b>100.0%</b>
% Inc(Dec)		36.82%	10.22%	-5.77%	3.33%	-8.46%	-2.93%	5.83%	-5.25%	-4.98%	-8.90%	-3.12%	-40.56%	-8.93%	-3.25%	-1.27%	-10.85%	4.0%	-3.9%		

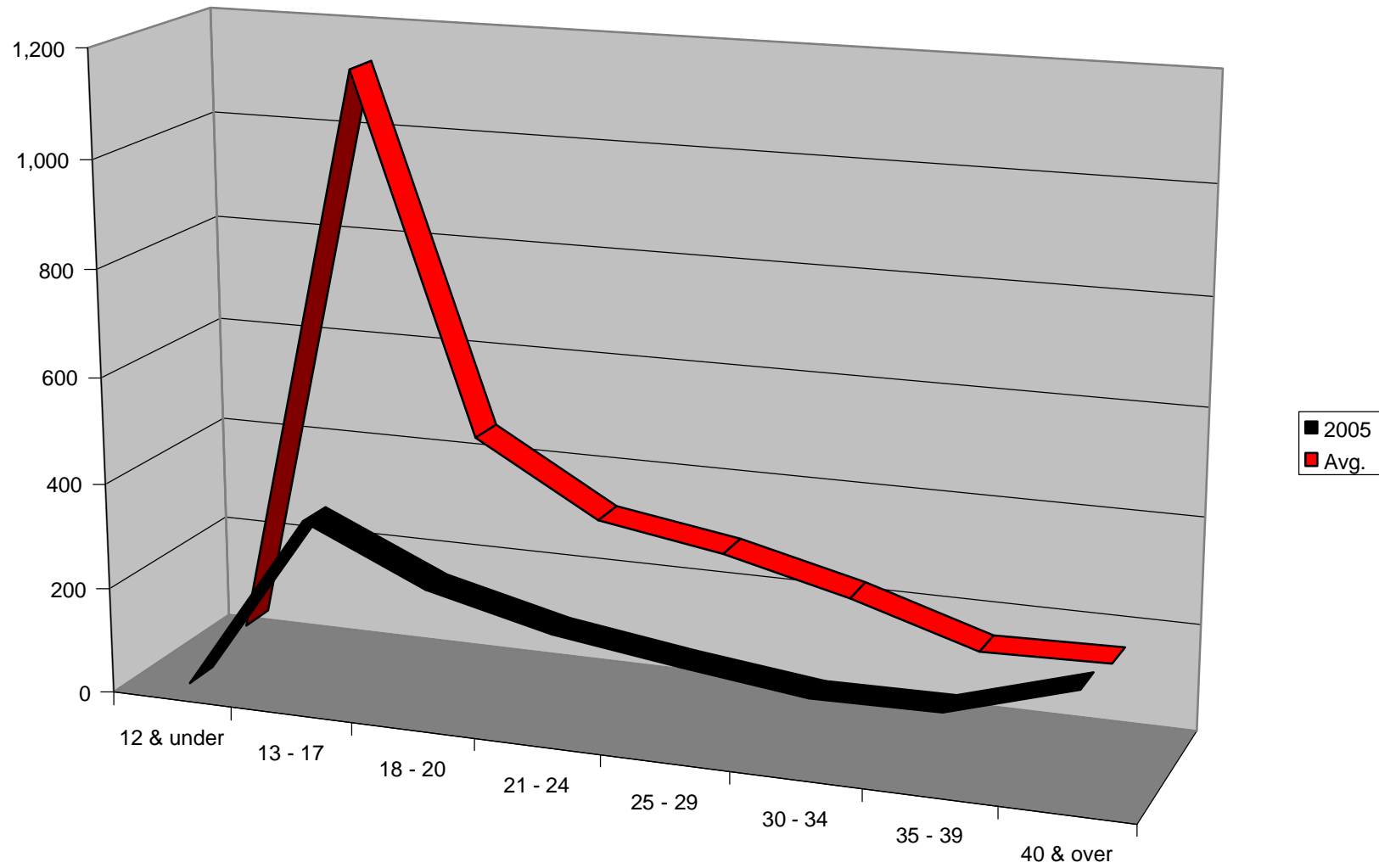
On average (1987-2005), 58.5% of the people arrested for Motor Vehicle Theft in Virginia were 20 years old or younger. (Information for 2005 is reported separately on the next page.)

**AGE OF OFFENDERS - VIRGINIA MOTOR VEHICLE THEFT ARRESTS, Continued**

<b>Age</b>	<b>2005</b>	<b>% of Total</b>	<b>Cum.</b>
<b>12 &amp; under</b>	7	0.5%	0.5%
<b>13 - 17</b>	346	24.9%	25.4%
<b>18 - 20</b>	242	17.4%	42.8%
<b>21 - 24</b>	187	13.5%	56.3%
<b>25 - 29</b>	154	11.1%	67.4%
<b>30 - 34</b>	125	9.0%	76.4%
<b>35 - 39</b>	129	9.3%	85.7%
<b>40 &amp; over</b>	199	14.3%	100.0%
<b>TOTAL</b>	1,389	100.0%	

Less than 50% (42.8%) of the people arrested for Motor Vehicle Theft in Virginia in 2005 were 20 years old or younger. This is the lowest percentage for this age category in the 19-year time period (1987-2005) covered by this report. This is a decrease in the arrest pattern during the 1987 through 2005 period when an average of 58.5% of the arrests were of people 20 years old or younger (see previous page). In fact, arrests of people 20 years old or younger have been less than 53% in seven of the last eight years (1998, 2000, 2001, 2002, 2003, 2004, and 2005).

Virginia Arrests for Motor Vehicle Theft by Age



**VALUE OF PROPERTY STOLEN - VIRGINIA MOTOR VEHICLE THEFT**

1987	1988	1989	1990	1991	1992	1993	1994
\$77,788,249	\$102,675,739	\$111,911,694	\$115,273,346	\$113,933,893	\$106,006,275	\$99,250,780	\$102,689,284
	31.99%	9.00%	3.00%	-1.16%	-6.96%	-6.37%	3.46%

1995	1996	1997	1998	2000	2001	2002	2003	2004	2005
\$127,668,582	\$126,860,726	\$127,775,309	\$123,859,005	\$105,422,963	\$109,309,561	\$111,721,528	\$106,689,725	\$105,735,129	\$93,565,797
24.33%	-0.63%	0.72%	-3.06%	-14.88%	3.69%	2.21%	-4.50%	-0.89%	-11.51%
<b>Five Year Average</b>									\$105,404,348.00

The “Value of Property Stolen – Virginia Motor Vehicle Theft” in 2005 was \$93,565,797 a decrease of 11.51% as compared to 2004

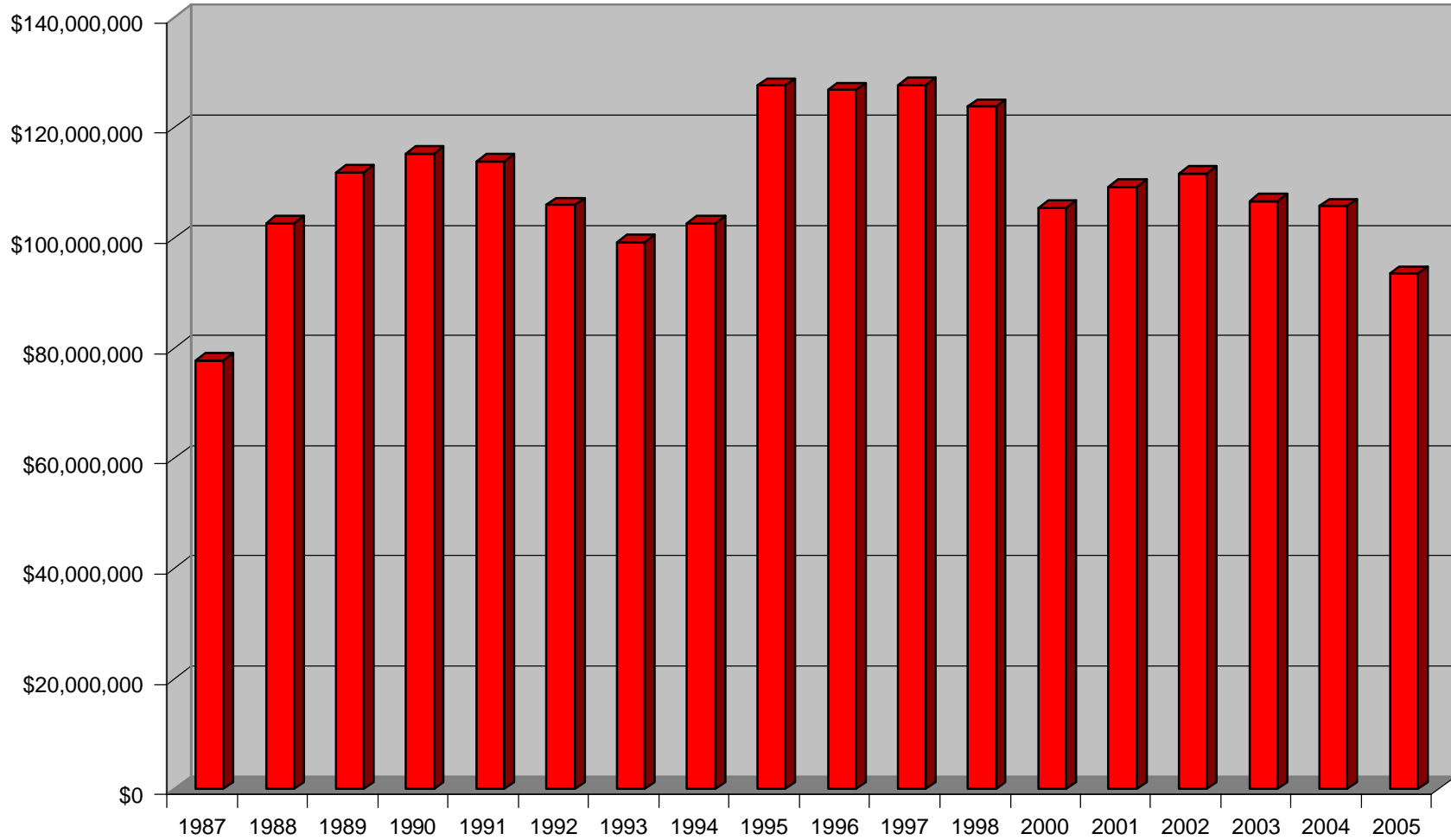
*Note: 1999 data omitted in order to make comparisons more relevant.*

**AVERAGE VALUE PER INCIDENT - VIRGINIA MOTOR VEHICLE THEFT**

1987	1988	1989	1990	1991	1992	1993	1994	1995	1996	1997	1998	1999	2000	2001	2002	2003	2004	2005
\$5,178	\$5,678	\$5,905	\$5,689	\$5,353	\$5,440	\$5,355	\$5,641	\$6,592	\$6,874	\$6,846	\$6,971	\$6,501	\$6,519	\$5,987	\$6,076	\$6,074	\$6,109	\$5,898
	9.64%	4.01%	-3.67%	-5.90%	1.62%	-1.55%	5.33%	16.87%	4.28%	-0.41%	1.81%	-6.74%	0.28%	-8.15%	1.48%	-0.04%	0.58%	-3.45%
<b>Five Year Average</b>																		\$6,028

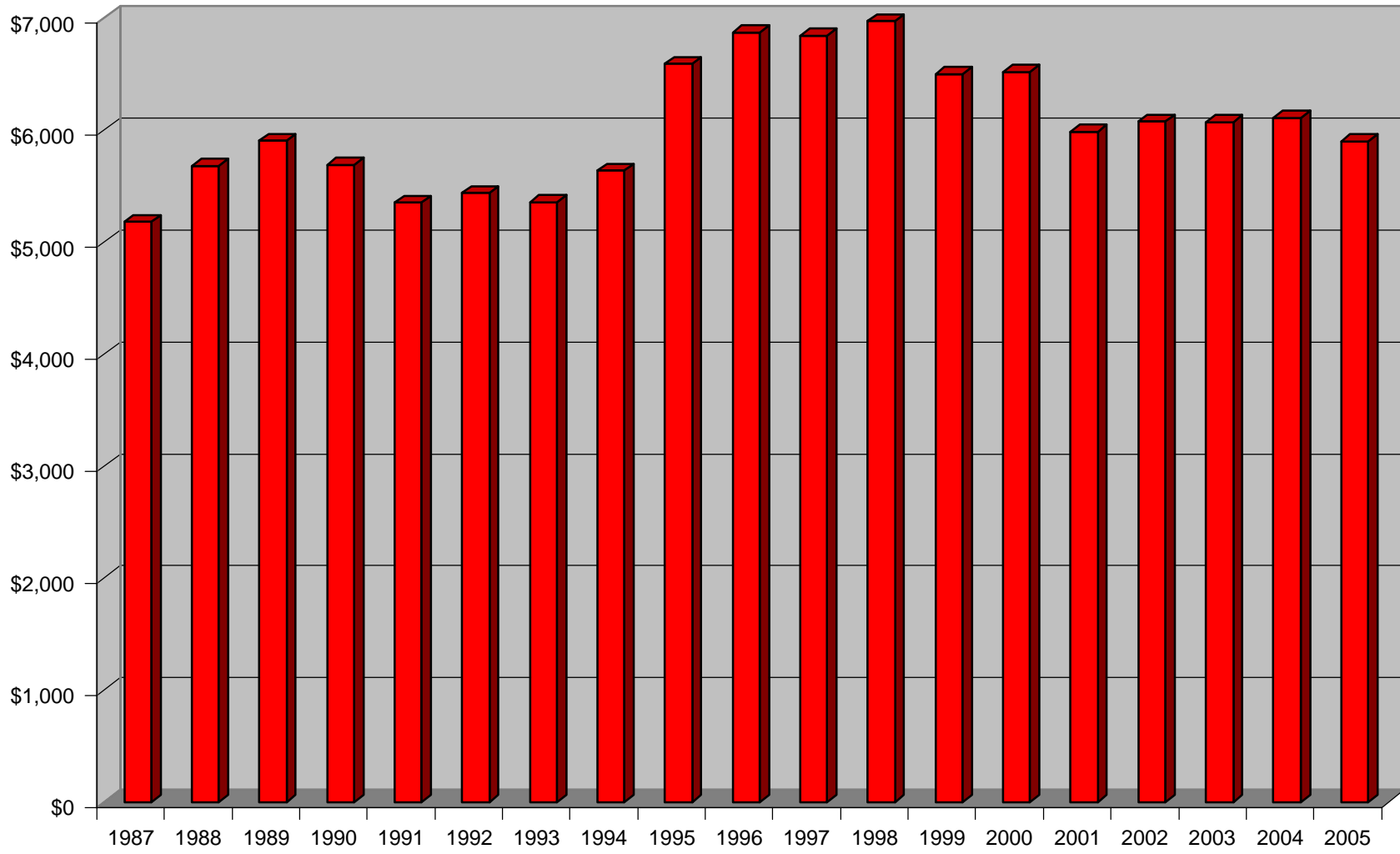
The average value per incident in 2005 decreased slightly, from \$6,109 in 2004 to \$5,898 in 2005, a 3.45% decrease. This is the first time since 1994 that the figure has been below \$6,000

Value of Property Stolen - Virginia Motor Vehicle Theft





Virginia Motor Vehicle Theft - Average Value per Incident



**LOCATION (BY TYPE OF JURISDICTION) - VIRGINIA MOTOR VEHICLE THEFT**

Location	1987	1988	1989	1990	1991	1992	1993	1994	1995
County	6,917	7,808	7,675	7,123	7,503	6,986	6,760	7,084	7,580
City	8,042	10,215	11,226	12,909	13,625	12,356	11,577	10,937	11,626
College	60	48	35	77	71	56	49	54	62
Other	3	13	15	154	85	90	147	130	98
Totals	15,022	18,084	18,951	20,263	21,284	19,488	18,533	18,205	19,366

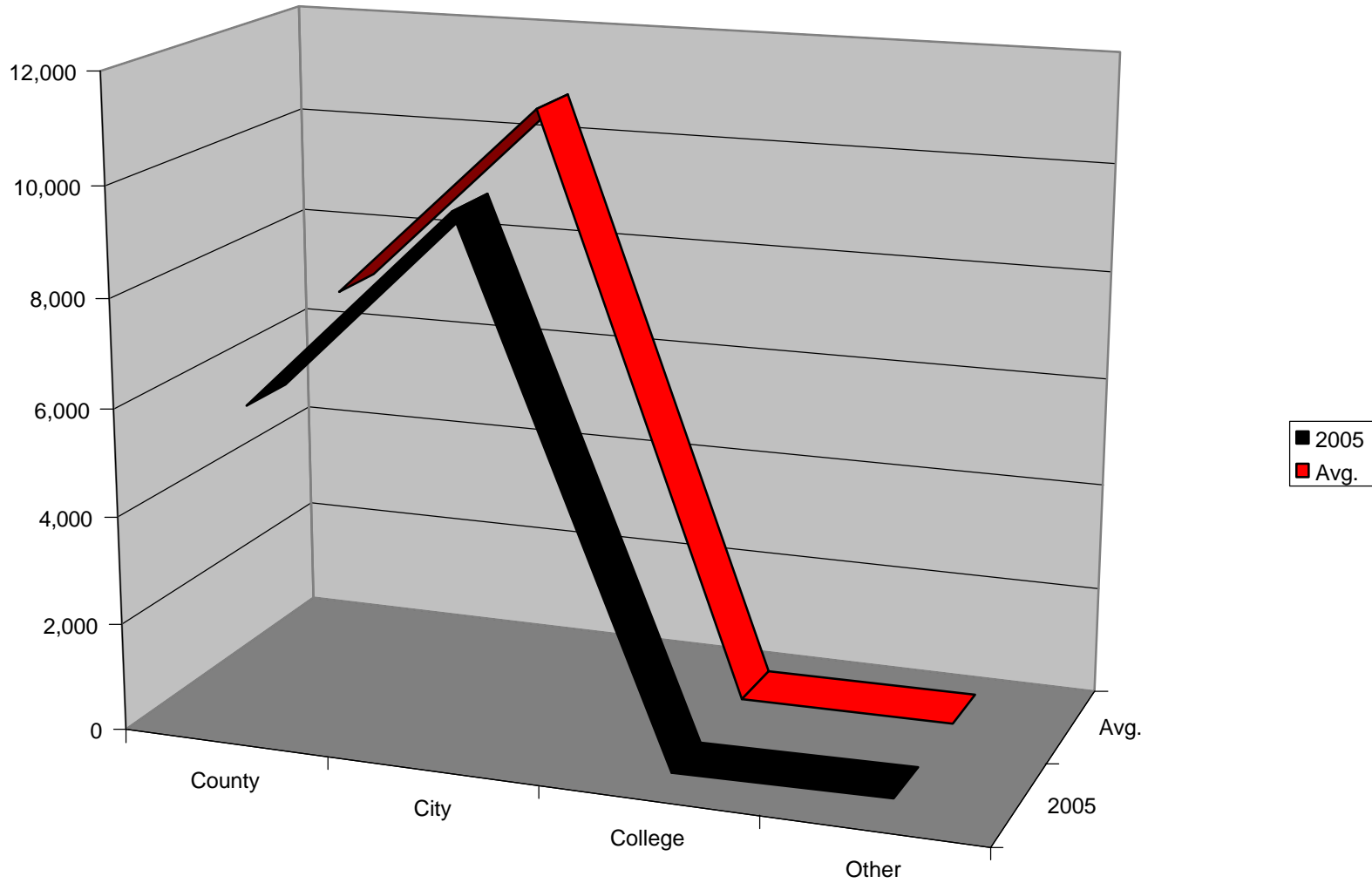
Location	1996	1997	1998	1999	2000	2001	2002	2003	2004	2005	Avg.	% of Total
County	7,965	7,784	7,348	7,025	5,485	6,404	6,983	7,262	7,778	5,939	7,127	39.38%
City	10,423	10,693	10,259	9,110	10,569	11,657	11,259	10,149	9,403	9,741	10,830	59.84%
College	29	56	37	30	46	64	66	77	110	59	57	0.32%
Other	37	130	125	58	72	132	80	78	18	125	84	0.46%
Total	18,454	18,663	17,769	16,223	16,172	18,257	18,388	17,566	17,309	15,864	18,098	100.00%

*Note: "Average" and "% of Total" figures are based on 1987 through 2003 data. The information is shown as two tables because of the limitation of the page size.*

Almost 60% of reported Motor Vehicle Thefts in Virginia occur in cities (59.84% for the 1987-2005 average; 61.40% for 2005). Another 40% (39.38% for the 1987-2005 average; 37.43% for 2005) occur in counties (includes towns). The remaining thefts occur in colleges and other locations such as airports.

*Note: 1999 thefts by location data were slightly different than total reported thefts (16,120 total vs. 16,223 total when counted by area).*

Virginia Motor Vehicle Thefts by Location



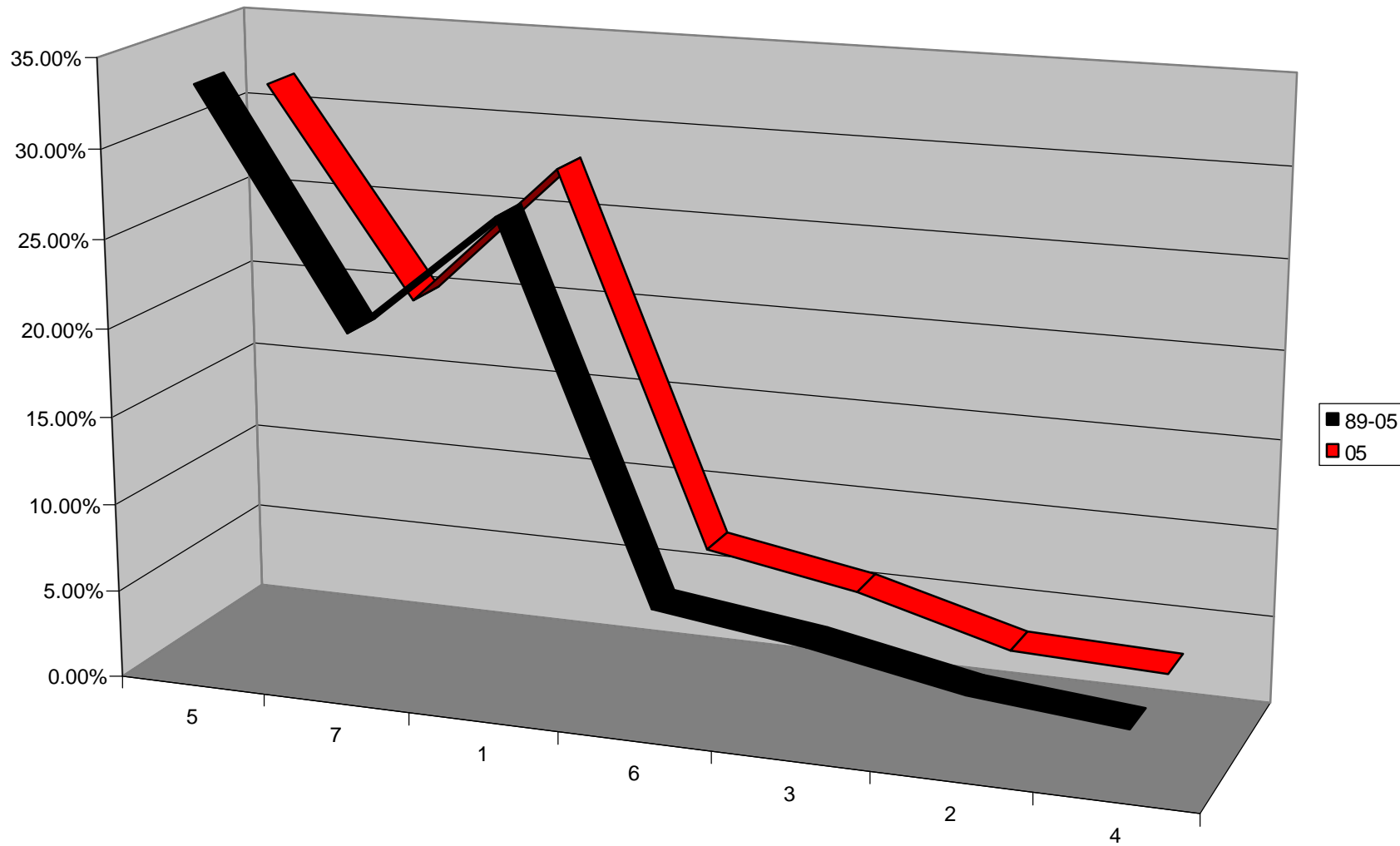
**LOCATION (BY VSP DIVISION) - VIRGINIA MOTOR VEHICLE THEFT**

Division	89-05 Thefts	% of Total	Cumulative
5	108,078	34.78%	34.78%
7	76,413	24.59%	59.37%
1	73,063	23.51%	82.88%
6	18,607	5.99%	88.87%
3	15,120	4.87%	93.73%
2	11,192	3.60%	97.33%
4	8,282	2.67%	100.00%
<b>Total</b>	<b>310,755</b>		

On average (1989-2005), three areas of the state account for over 82% (82.88%) of the reported Motor Vehicle Thefts in Virginia: Tidewater - 35% [34.78%] (Virginia State Police Division 5); Northern Virginia - 25% [24.59%] (Virginia State Police Division 7); and Richmond - 23% [23.51%] (Virginia State Police Division 1).

Division	00 Thefts	01 Thefts	02 Thefts	03 Thefts	04 Thefts	05 Thefts	Total	% of Total
5	6,257	6,179	6,619	5,438	5,324	4,928	39,875	33.29%
1	4,701	5,265	4,623	4,647	4,755	4,368	32,632	27.25%
7	2,140	3,378	4,020	4,111	3,784	3,186	24,275	20.27%
6	1,025	1,216	949	1,167	1,309	1,191	7,932	6.62%
3	950	1,047	987	905	875	935	6,591	5.50%
2	656	678	696	696	649	622	4,678	3.91%
4	429	494	494	602	613	634	3,782	3.16%
<b>Total</b>	<b>16,158</b>	<b>18,257</b>	<b>18,388</b>	<b>17,566</b>	<b>17,309</b>	<b>15,864</b>	<b>119,765</b>	<b>100.00%</b>

Thefts by Division (as a % of total thefts)

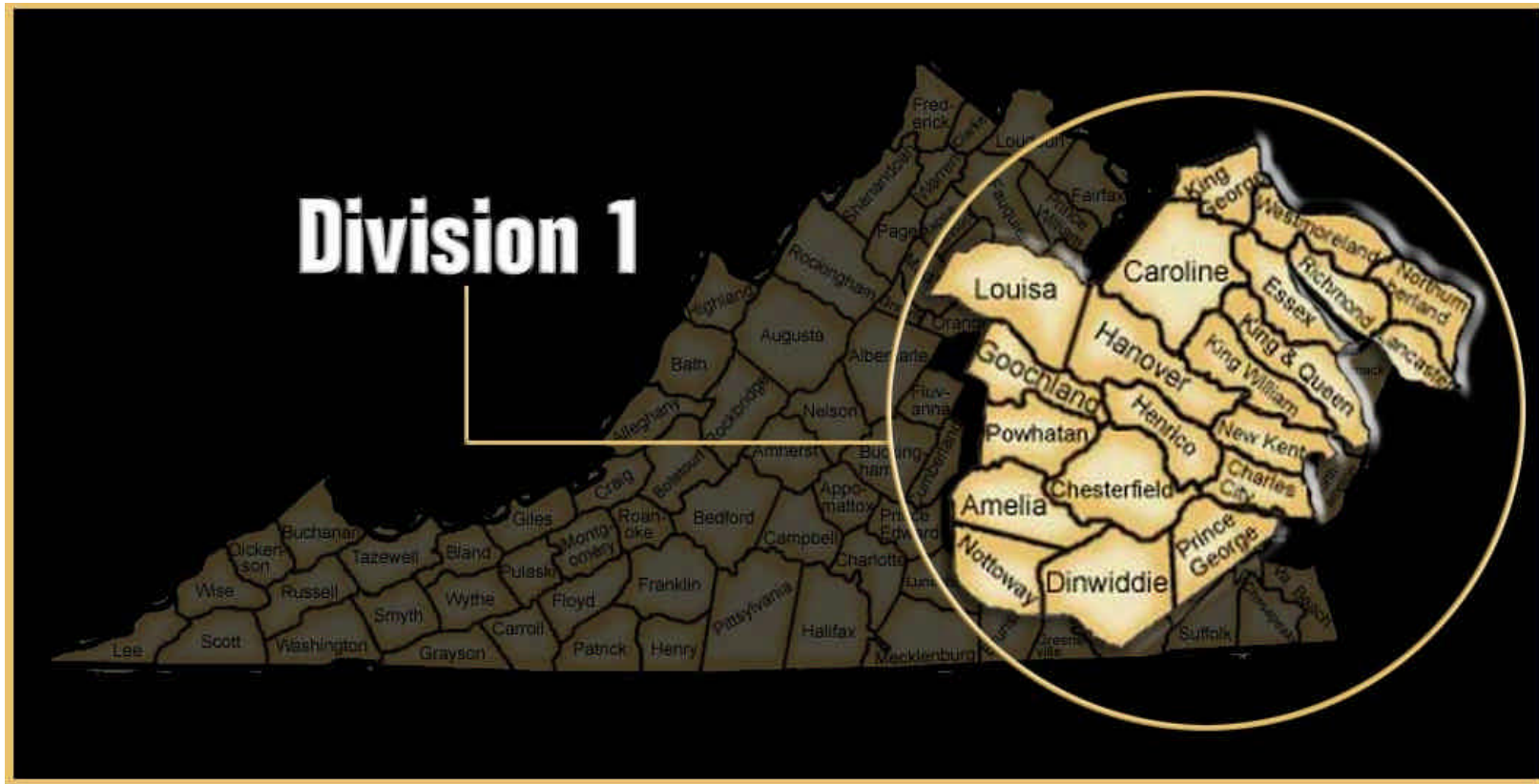


**CHANGE BY DIVISION FROM '04 TO '05 - VIRGINIA MOTOR VEHICLE THEFT**

<b>Div.</b>	<b>2004 Thefts</b>	<b>2005 Thefts</b>	<b>Difference</b>	<b>% Change</b>	<b>% of Total Increase/Decrease</b>
<b>1</b>	4,755	4,368	-387	-8.33%	26.78%
<b>2</b>	649	622	-27	-3.88%	1.87%
<b>3</b>	875	935	60	6.63%	-4.15%
<b>4</b>	613	634	21	3.49%	-1.45%
<b>5</b>	5,324	4,928	-396	-7.28%	27.40%
<b>6</b>	1,309	1,191	-118	-10.11%	8.17%
<b>7</b>	3,784	3,186	-598	-14.55%	41.38%
<b>Total</b>	17,309	15,864	-1,445	-8.23%	

Five divisions, Divisions 1, 2, 5, 6 and 7, experienced decreases in 2005, while two divisions, Divisions 3 and 4, posted increases.

*Note: Additional analysis for each of the seven divisions follows.*



**Analysis of 2005 Virginia Motor Vehicle Theft Statistics**

**DETAIL BY AREA FOR DIVISION 1 - VIRGINIA MOTOR VEHICLE THEFT**

<b>Area</b>	<b>1999 Thefts</b>	<b>2000 Thefts</b>	<b>2001 Thefts</b>	<b>2002 Thefts</b>	<b>2003 Thefts</b>	<b>2004 Thefts</b>	<b>05 Thefts</b>	<b>Difference</b>	<b>% Change</b>
Amelia Co.	5	3	11	8	7	14	10	-4	-28.57%
Caroline Co. (Bowling Green)	40	28	25	14	24	33	12	-21	-63.64%
Charles City Co.	2	1	3	6	3	2	0	-2	-100.00%
Chesterfield Co.	730	465	467	475	477	515	570	55	10.68%
Dinwiddie Co. (McKinney)	40	44	31	32	21	58	31	-27	-46.55%
Essex Co. (Tappahannock)	19	22	18	17	9	9	18	9	100.00%
Goochland Co.	16	9	15	12	15	24	17	-7	-29.17%
Hanover Co. (Ashland)	50	54	53	75	76	85	60	-25	-29.41%
Henrico Co.	789	783	879	826	784	839	726	-113	-13.47%
King & Queen Co.	3	0	0	0	1	0	2	2	200.00%
King George Co.	20	19	24	35	23	28	18	-10	-35.71%
King William Co.	15	12	6	1	2	9	5	-4	-44.44%
Lancaster Co. (Kilmarnock)	6	4	11	7	9	4	5	1	25.00%
Louisa Co. (Louisa)	21	19	16	21	9	26	17	-9	-34.62%
New Kent Co. (West Point)	12	13	13	28	13	14	22	8	57.14%
Northumberland Co.	5	6	5	16	13	12	6	-6	-50.00%
Nottoway Co. (Blackstone; Crewe; Burkeville)	13	16	20	5	14	27	23	-4	-14.81%
Powhatan Co.	5	16	17	18	22	25	24	-1	-4.00%
Richmond Co. (Warsaw)	6	5	7	8	13	7	6	-1	-14.29%
Westmoreland Co. (Colonial Beach)	17	26	20	28	30	19	24	5	26.32%
Colonial Heights	41	39	39	45	26	37	45	8	21.62%
Hopewell	16	105	140	100	77	127	148	21	16.54%
Petersburg	275	299	324	284	221	394	296	-98	-24.87%
Richmond	2,101	2,695	3,091	2,548	2,728	2,417	2,249	-168	-6.95%
VCU PD	5	11	6	6	11	13	17	4	30.77%
U of R PD	4	1	3	2	4	2	3	1	50.00%
Capitol PD	6	0	2	2	2	4	0	-4	-100.00%
RIC Airport PD	10	9	14	4	12	11	13	2	18.18%
SS VA Training Center	0	2	4	0	1	0	1	1	100.00%
VA Dept Alc. Bev. Control	1	0	1	0	0	0	0	0	0.00%
<b>TOTAL</b>	<b>4,273</b>	<b>4,706</b>	<b>5,265</b>	<b>4,623</b>	<b>4,647</b>	<b>4,755</b>	<b>4,368</b>	<b>-387</b>	<b>-8.14%</b>

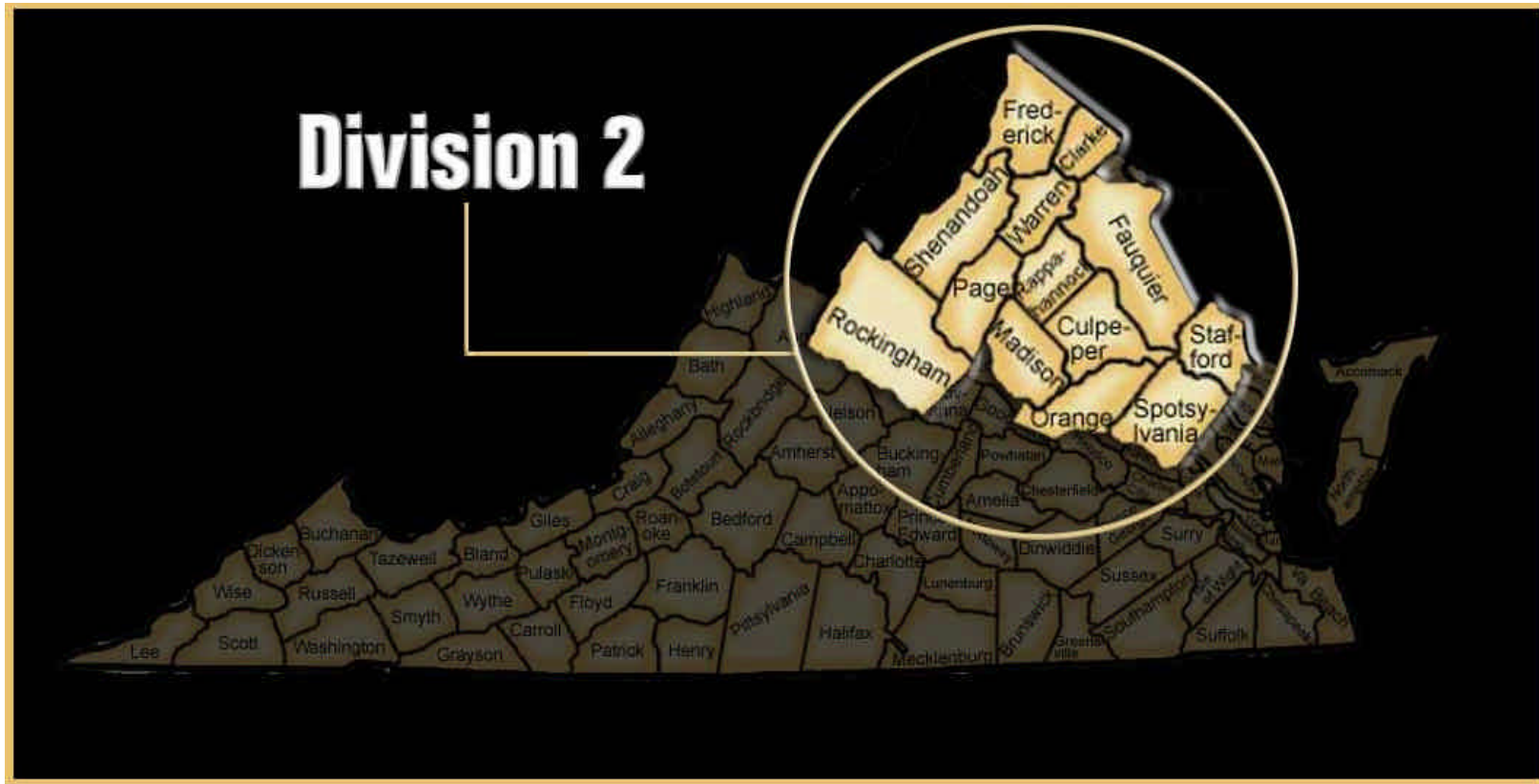


## **Analysis of 2005 Virginia Motor Vehicle Theft Statistics**

There were 387 fewer Motor Vehicle Thefts in Division 1 in 2005 than in 2004, an 8.14% decrease.

While the City of Richmond still has the highest number of auto thefts in the Division (2,249, 51.49% of all the thefts in the Division ), the city also had the largest decrease of auto thefts in the Division in absolute numbers (168, 6.95%). Other large decreases in absolute numbers of thefts were in Henrico County (113 thefts; 13.47%) and Petersburg (98 thefts; 24.87%). Chesterfield County had the largest increase in absolute number of thefts (55 thefts; 10.68%).

Richmond also had the most thefts of any jurisdiction in the state. The second and third highest numbers of reported thefts were in Norfolk (1,143 thefts) and Fairfax County (1,137 thefts).



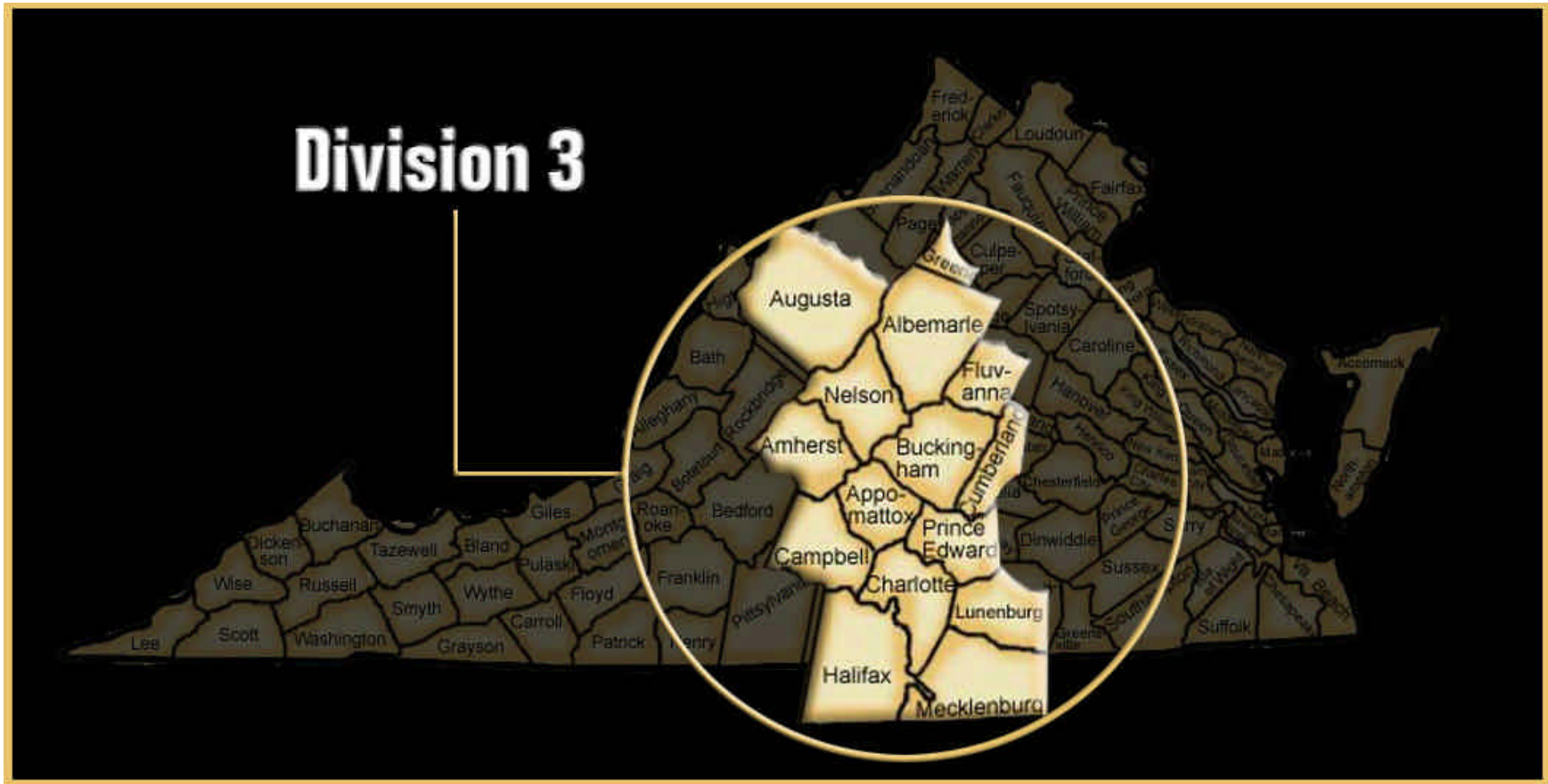
**DETAIL BY AREA FOR DIVISION 2 - VIRGINIA MOTOR VEHICLE THEFT**

Area	1999 Thefts	2000 Thefts	2001 Thefts	2002 Thefts	2003 Thefts	2004 Thefts	2005 Thefts	Differ- ence	% Change
Clarke Co. (Berryville)	16	12	17	15	22	18	12	-6	-33.33%
Culpeper Co. (Culpeper)	26	0	19	32	30	33	28	-5	-15.15%
Fauquier Co. (Warrenton)	55	35	47	53	60	41	41	0	0.00%
Frederick Co. (Middletown; Stephens City)	96	93	105	92	95	105	110	5	4.76%
Madison Co.	9	8	12	3	1	2	7	5	250.00%
Orange Co. (Orange; Gordonsville)	20	8	21	31	28	27	16	-11	-40.74%
Page Co. (Luray; Shenandoah; Stanley)	20	8	20	23	5	6	23	17	283.33%
Rappahannock Co.	4	5	6	0	0	7	5	-2	-28.57%
Shenandoah Co. (Edinburg; Mt. Jackson; Woodstock; Strasburg; New Market)	27	33	24	37	26	25	27	2	8.00%
Spotsylvania Co.	114	95	96	82	94	84	90	6	7.14%
Stafford Co.	148	160	117	142	152	109	69	-40	-36.70%
Warren Co. (Front Royal)	74	68	71	56	56	57	65	8	14.04%
Fredericksburg	31	75	65	86	77	76	64	-12	-15.79%
Winchester	40	54	57	44	50	59	65	6	10.17%
Univ of Mary Wash PD	1	2	1	0	0	0	0	0	0.00%
<b>TOTAL</b>	<b>744</b>	<b>656</b>	<b>678</b>	<b>696</b>	<b>696</b>	<b>649</b>	<b>622</b>	<b>-27</b>	<b>-4.16%</b>

Division 2 had 27 fewer thefts in 2005 than in 2004, a 4.16% decrease.

The largest decreases in the Division in absolute numbers of thefts occurred in Stafford County (40 thefts; 36.70%), Fredricksburg (12 thefts; 15.79%) and Orange County, including the Town of Orange and Gordonsville (11 thefts; 40.74%).

The largest increases were in Page County, including Luray, Shenandoah and Stanley (17 thefts; 283.33%), followed by Warren County , including the town of Front Royal (8 thefts; 14.04%).



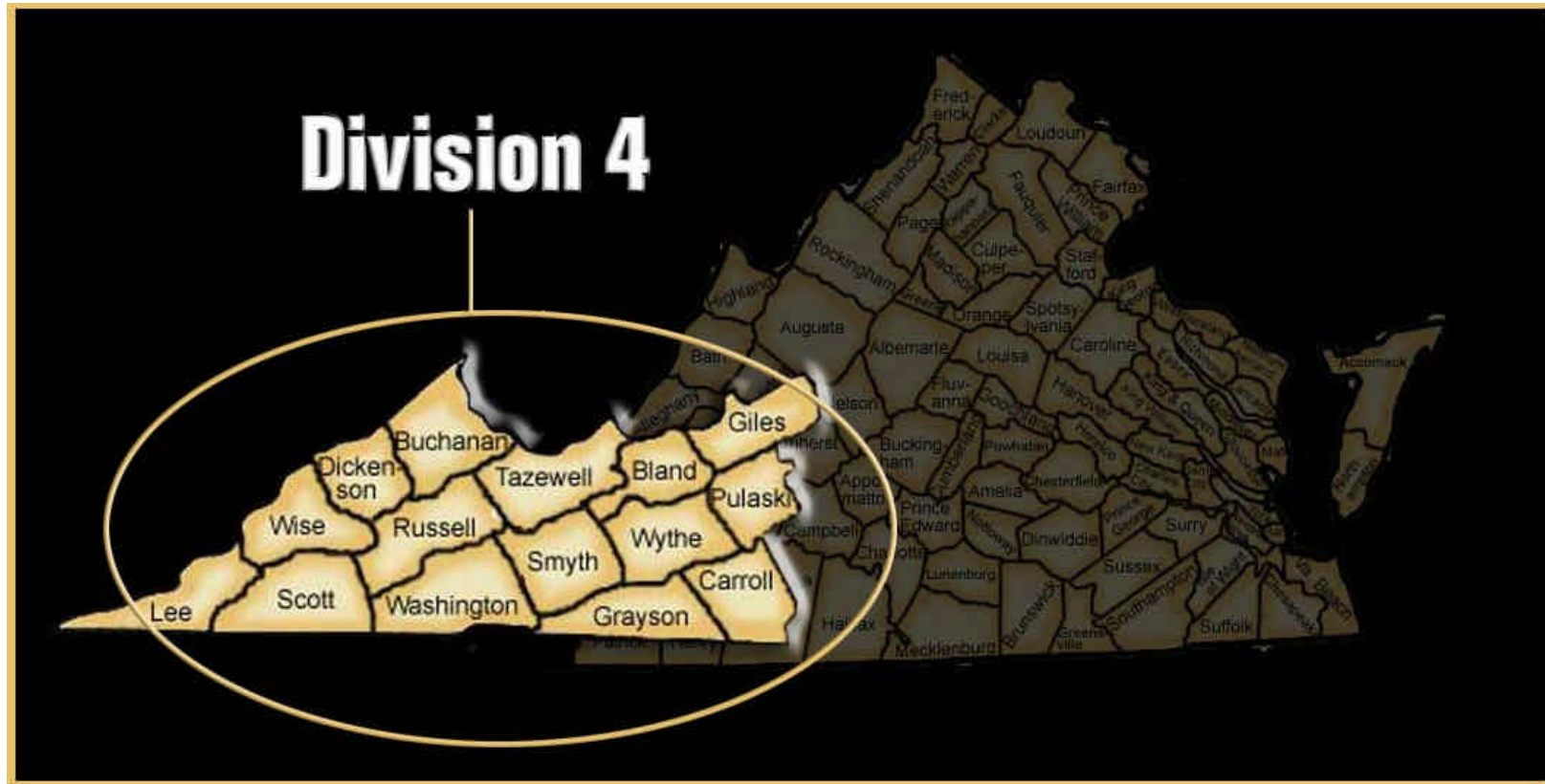
**DETAIL BY AREA FOR DIVISION 3 - VIRGINIA MOTOR VEHICLE THEFT**

Area	1999 Thefts	2000 Thefts	2001 Thefts	2002 Thefts	2003 Thefts	2004 Thefts	2005 Thefts	Differ- ence	% Change
Albemarle Co.	66	88	74	86	91	78	117	39	50.00%
Amherst Co. (Amherst)	31	22	43	19	33	31	25	-6	-19.35%
Appomattox Co.	9	8	5	2	6	2	11	9	450.00%
Augusta Co.	65	46	47	51	69	65	40	-25	-38.46%
Buckingham Co.	19	9	8	8	3	12	16	4	33.33%
Campbell Co. (Altavista; Brookneal)	69	72	81	82	40	54	73	19	35.19%
Charlotte Co.	13	4	11	8	17	3	14	11	366.67%
Cumberland Co.	10	12	7	10	3	5	11	6	120.00%
Fluvanna Co.	19	12	19	15	15	22	15	-7	-31.82%
Greene Co.	2	17	11	12	8	11	10	3	27.27%
Halifax Co. (Halifax; South Boston)	48	30	40	54	30	22	33	11	50.00%
Lunenburg Co. (Kenbridge; Victoria)	7	9	22	14	14	8	11	3	37.50%
Mecklenburg Co. (Chase City; Clarksville; LaCrosse; South Hill)	60	79	71	41	39	31	43	12	38.71%
Nelson Co.	19	20	25	17	26	18	13	-5	-27.78%
Prince Edward Co. (Farmville)	5	2	9	7	8	1	4	3	300.00%
Rockingham Co. (Bridgewater; Broadway; Dayton; Elkton; Grottoes; Timberville)	31	26	36	43	46	27	22	-5	-18.52%
Charlottesville	122	149	120	143	129	154	168	14	9.09%
Harrisonburg	101	74	94	73	64	78	46	-32	-41.03%
Lynchburg	125	213	220	206	168	176	175	-1	-0.57%
Staunton	38	38	43	51	53	26	42	16	61.54%
Waynesboro	29	14	52	36	36	43	40	-3	-6.98%
UVA PD	3	6	3	9	3	5	3	-2	-40.00%
Longwood College	0	0	2	0	0	0	0	0	0.00%
James Madison U PD	1	0	4	0	4	3	3	0	0.00%
TOTAL	935	950	1047	987	905	875	935	60	6.86%

There were 60 more Motor Vehicle Thefts in Division 3 in 2005 than in 2004, a 6.86% increase.

The largest decreases in absolute numbers of thefts were in Harrisonburg (32 thefts; 41.03%) and Augusta County (25 thefts; 38.46%).

The largest increases in absolute numbers were in Albemarle County (39 thefts; 50.00%) and Campbell County, including the towns of Altavista and Brookneal (19 thefts; 35.19%).



**DETAIL BY AREA FOR DIVISION 4 - VIRGINIA MOTOR VEHICLE THEFT**

Area	99 Thefts	00 Thefts	01 Thefts	02 Thefts	03 Thefts	04 Thefts	05 Thefts	Difference	% Change
Bland Co.	3	3	2	3	6	4	4	0	0.00%
Buchanan Co. (Grundy)	32	13	30	48	62	52	51	-1	-1.92%
Carroll Co. (Hillsville)	35	44	35	26	43	65	52	-13	-20.00%
Dickenson Co. (Clintwood; Haysi; Clincho)	5	5	5	4	7	7	5	-2	-28.57%
Giles Co. (Glen Lyn; Pearisburg; Pembroke; Rich Creek; Narrows)	7	14	4	6	5	1	24	23	2300.00%
Grayson Co. (Fries; Independence)	13	9	7	11	12	17	15	-2	-11.76%
Lee Co. (Jonesville; Pennington Gap)	21	19	21	27	18	27	20	-7	-25.93%
Pulaski Co. (Pulaski; Dublin)	46	24	36	34	37	24	36	12	50.00%
Russell Co. (Lebanon; Honaker)	18	20	22	34	32	40	48	8	20.00%
Scott Co. (Gate City; Weber City)	18	12	28	29	29	39	46	7	17.95%
Smyth Co. (Marion; Saltville; Chilhowie)	28	28	41	23	38	39	36	-3	-7.69%
Tazewell Co. (Bluefield; Pocahontas; Richlands; Tazewell; Cedar Bluff)	61	66	59	64	62	64	63	-1	-1.56%
Washington Co. (Abingdon; Damascus; Glade Spring)	81	50	49	52	92	80	70	-10	-12.50%
Wise Co. (Appalachia; Big Stone Gap; Coeburn; Pound; St. Paul; Wise)	62	31	67	53	57	63	60	-3	-4.76%
Wythe Co. (Wytheville; Rural Retreat)	30	41	28	19	60	34	38	4	11.76%
Bristol	24	27	38	33	21	32	41	9	28.13%
Galax	20	13	17	13	12	17	14	-3	-17.65%
Norton	12	10	5	15	9	8	9	1	12.50%
Univ of VA at Wise							2	N/A	N/A
<b>TOTAL</b>	521	429	494	494	602	613	634	21	3.43%

There were 21 more thefts in Division 4 in 2005 a 3.43% increase.

Giles County, including the towns of Glen Lyn, Pearisburg, Pembroke, Rich Creek and Narrows, had the largest increase in absolute numbers of thefts (23; 2300.0%).

Carroll County, including the town of Hillsville, saw the largest decrease (13 thefts; 20.00%)





**Analysis of 2005 Virginia Motor Vehicle Theft Statistics**

**DETAIL BY AREA FOR DIVISION 5 - VIRGINIA MOTOR VEHICLE THEFT**

<b>Area</b>	<b>1999 Thefts</b>	<b>2000 Thefts</b>	<b>2001 Thefts</b>	<b>2002 Thefts</b>	<b>2003 Thefts</b>	<b>2004 Thefts</b>	<b>2005 Thefts</b>	<b>Differ- ence</b>	<b>% Change</b>
Accomack Co. (Chincoteague; Onancock; Parksley; Onley)	83	84	70	54	58	49	60	11	22.45%
Brunswick Co. (Lawrenceville)	7	13	10	8	14	30	22	-8	-26.67%
Gloucester Co.	57	38	20	7	24	16	22	6	37.50%
Greensville Co.	9	11	10	6	17	18	13	-5	-27.78%
Isle of Wight Co. (Smithfield)	61	42	61	58	41	37	68	31	83.78%
James City Co.	64	50	60	78	79	54	54	0	0.00%
Mathews Co.	5	5	6	3	9	6	6	0	0.00%
Middlesex Co.	12	6	7	4	4	7	11	4	57.14%
Northampton Co. (Cape Charles; Exmore)	21	14	19	18	8	16	6	-10	-62.50%
Prince George Co.	41	24	36	40	19	36	33	-3	-8.33%
Southampton Co. (Courtland; Boykins)	23	33	26	33	23	24	26	2	8.33%
Surry Co.	2	2	5	1	1	3	1	-2	-66.67%
Sussex Co. (Waverly)	18	12	18	17	11	14	28	14	100.00%
York Co.	85	75	45	44	44	40	53	13	32.50%
Chesapeake	580	207	0	630	535	633	536	-97	-15.32%
Emporia	34	38	42	30	16	13	16	3	23.08%
Franklin	22	15	30	26	26	26	20	-6	-23.08%
Hampton	464	630	1,108	880	566	567	578	11	1.94%
Newport News	1,193	1,256	1,227	1,299	984	962	869	-93	-9.67%
Norfolk	782	1,742	1,522	1,630	1,440	1,218	1,143	-75	-6.16%
Poquoson	5	5	7	6	6	10	9	-1	-10.00%
Portsmouth	610	770	680	649	504	588	418	-170	-28.91%
Suffolk	188	286	152	182	156	143	121	-22	-15.38%
Virginia Beach	719	870	955	864	814	773	772	-1	-0.13%
Williamsburg	30	16	24	18	13	22	24	2	9.09%
Christopher Newport University PD	0	0	0	2	0	0	0	0	0.00%
Hampton University PD	1	2	2	4	0	3	3	0	0.00%
Norfolk State University PD	0	9	20	16	14	9	6	-3	-33.33%
Thomas Nelson Community College	0	0	2	0	2	0	0	0	0.00%
Virginia State University PD	6	2	3	2	3	1	1	0	0.00%
William & Mary College PD	0	1	0	4	0	0	3	3	300.00%
Old Dominion Campus PD	4	0	8	3	5	3	6	3	100.00%

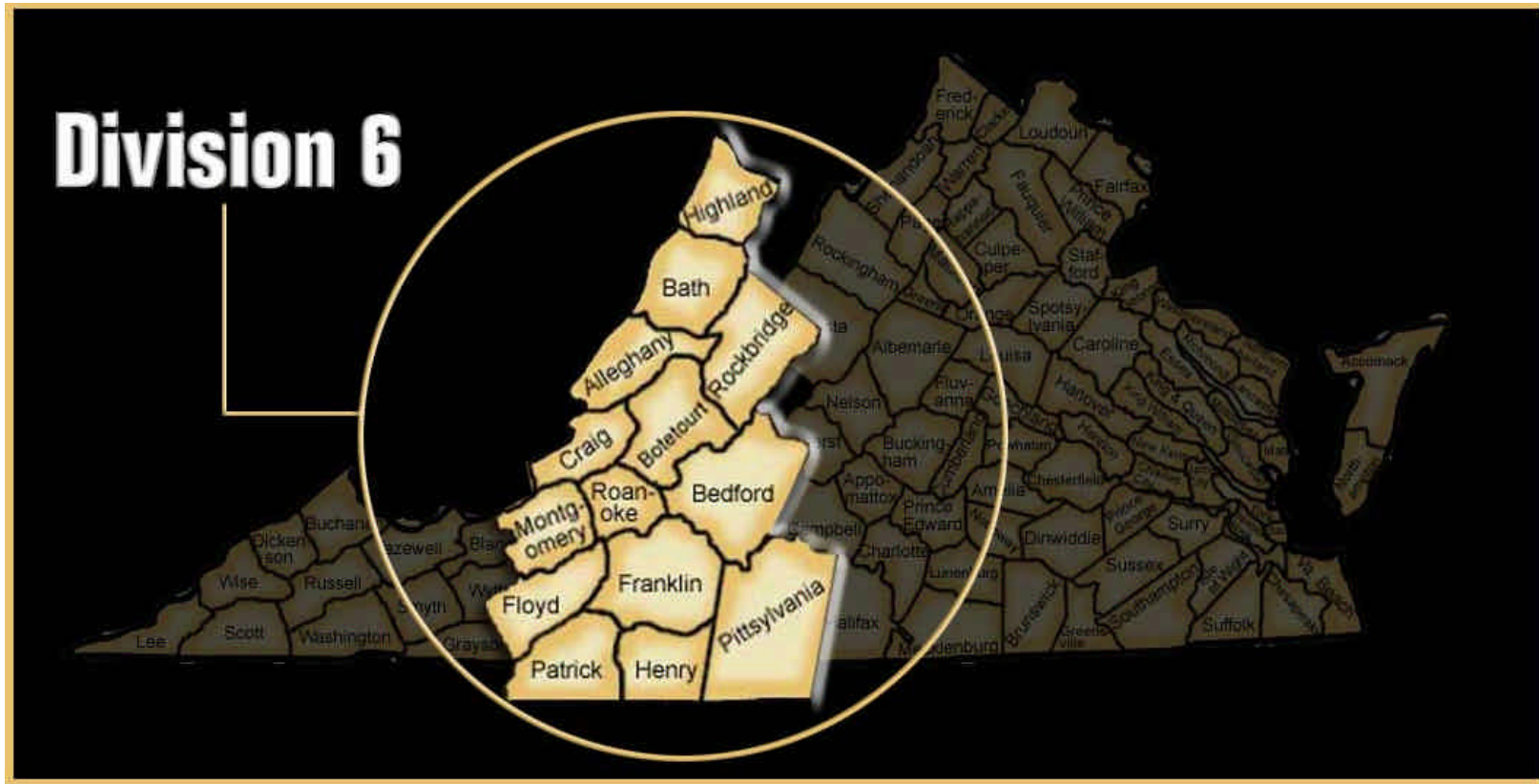
## Analysis of 2005 Virginia Motor Vehicle Theft Statistics

Norfolk Airport Authority	4	2	4	3	2	3	0	-3	-100.00%
TOTAL	5,510	6,260	6,179	6,619	5,438	5,324	4,928	-396	-7.44%

There were 396 fewer reported Motor Vehicle Thefts in Division 5 in 2005 than in 2004, a 7.44% decrease.

The largest decreases in absolute numbers of thefts were posted by Portsmouth (170 thefts; 28.91%), Chesapeake (97 thefts; 15.32%), Newport News (93 thefts; 9.67%) and Norfolk (75 thefts; 6.16%).

The largest increases were in Isle of Wight County, including Smithfield (31 thefts; 83.78%), Sussex County, including Waverly (14 thefts; 100.00%) and York County (13 thefts; 32.50%).



**Analysis of 2005 Virginia Motor Vehicle Theft Statistics**

**DETAIL BY AREA FOR DIVISION 6 - VIRGINIA MOTOR VEHICLE THEFT**

<b>Area</b>	<b>1999 Thefts</b>	<b>2000 Thefts</b>	<b>2001 Thefts</b>	<b>2002 Thefts</b>	<b>2003 Thefts</b>	<b>2004 Thefts</b>	<b>2005 Thefts</b>	<b>Differ- ence</b>	<b>% Change</b>
Alleghany Co. (Iron Gate)	10	9	9	16	14	9	6	-3	-33.33%
Bath Co.	2	0	1	1	0	0	0	0	0.00%
Bedford Co.	27	20	35	62	45	35	36	1	2.86%
Botetourt Co.	22	29	27	27	21	19	27	8	42.11%
Craig Co.	3	2	3	1	0	2	3	1	50.00%
Floyd Co.	9	10	13	16	16	20	11	-9	-45.00%
Franklin Co. (Rocky Mount)	44	51	55	35	57	75	54	-21	-28.00%
Henry Co.	147	152	133	109	115	111	87	-24	-21.62%
Highland Co.	1	2	2	0	0	1	0	-1	-100.00%
Montgomery Co. (Blacksburg; Christiansburg)	90	85	96	64	93	87	95	8	9.20%
Patrick Co.	24	68	58	62	37	30	41	11	36.67%
Pittsylvania Co. (Chatham; Gretna; Hurt)	54	96	87	44	77	72	57	-15	-20.83%
Roanoke Co. (Vinton)	66	74	94	100	117	113	84	-29	-25.66%
Rockbridge Co. (Glasgow)	19	29	9	5	4	12	9	-3	-25.00%
Bedford	12	9	6	6	8	5	3	-2	-40.00%
Buena Vista	2	6	1	4	2	6	2	-4	-66.67%
Clifton Forge	3	2	3	5	4	5	2	-3	-60.00%
Covington	0	2	8	19	18	11	6	-5	-45.45%
Danville	141	33	133	103	134	119	113	-6	-5.04%
Lexington	5	3	4	2	3	8	6	-2	-25.00%
Martinsville	50	47	64	29	28	25	25	0	0.00%
Radford	13	0	0	0	0	0	32	32	3200.00%
Roanoke	286	261	337	199	333	500	451	-49	-9.80%
Salem	43	35	35	39	37	43	37	-6	-13.95%
Ferrum College PD	0	1	1	0	1	0	0	0	0.00%
Radford Univ PD	0	3	2	1	3	1	0	-1	-100.00%
Virginia Tech PD	1	0	0	0	0	0	4	4	400.00%
VMI PD	1	0	0	0	0	0	0	0	0.00%
<b>TOTAL</b>	<b>1,054</b>	<b>1,029</b>	<b>1,216</b>	<b>949</b>	<b>1,167</b>	<b>1,309</b>	<b>1,191</b>	<b>-118</b>	<b>-9.01%</b>

There were 118 fewer Motor Vehicle Thefts in Division 6 in 2005 than in 2004, a 9.01% decrease.

## **Analysis of 2005 Virginia Motor Vehicle Theft Statistics**

**Page 36**

The largest decrease in Division 6 was the City of Roanoke (49 thefts; 9.80%), followed by Roanoke County, including the town of Vinton (29 thefts; 25.66%), Henry County (24 thefts; 21.62%) and Franklin County, including Rocky Mount (21 thefts; 28.00%).

The largest increase in Division 6 was the City of Radford (32 thefts; 3200%).



**DETAIL BY AREA FOR DIVISION 7 - VIRGINIA MOTOR VEHICLE THEFT**

Area	1999 Thefts	2000 Thefts	2001 Thefts	2002 Thefts	2003 Thefts	2004 Thefts	2005 Thefts	Difference	% Change
Arlington Co.	665	309	702	676	599	493	419	-74	-15.01%
Fairfax Co. (Herndon; Vienna)	1,230	311	527	1,353	1,502	1,415	1,137	-278	-19.65%
Loudoun Co. (Leesburg; Middleburg; Purcellville)	203	229	243	220	243	212	259	47	22.17%
Prince William Co. (Quantico; Dumfries; Occoquan; Haymarket)	565	695	778	721	828	895	677	-218	-24.36%
Alexandria	706	293	702	736	621	475	399	-76	-16.00%
Fairfax	62	49	40	0	7	0	0	0	0.00%
Falls Church	36	0	71	52	45	42	37	-5	-11.90%
Manassas	119	154	151	130	136	141	124	-17	-12.06%
Manassas Park	30	35	50	44	42	41	15	-26	-63.41%
George Mason U PD	3	7	6	13	20	6	7	1	16.67%
NOVA Comm Clg PD	0	1	1	4	7	2	1	-1	-50.00%
Metro Wash Airport Authority	37	59	107	71	61	62	111	49	79.03%
<b>TOTAL</b>	<b>4,634</b>	<b>2,142</b>	<b>3,378</b>	<b>4,020</b>	<b>4,111</b>	<b>3,784</b>	<b>3,186</b>	<b>-598</b>	<b>-15.80%</b>

There were 598 fewer reported Motor Vehicle Thefts in Division 7 in 2005 than in 2004, a 15.80% decrease. This was the largest decrease in the state in auto theft in 2005, both in absolute numbers and as a percentage change.

The Metro Washington Airport Authority, had the largest increase (49 thefts; 79.03%).

Fairfax County had the largest decrease (278 thefts; 19.65%), followed by Prince William County, including Quantico, Dumfries, Occoquan and Haymarket (218 thefts; 24.36%).