

**VIRGINIA STATE POLICE
Help Eliminate Auto Theft
(H.E.A.T.)
Program**



**Analysis of 2006
Virginia Motor Vehicle Theft Statistics**

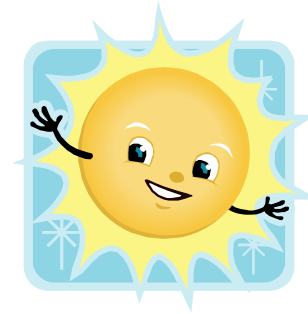
Prepared by



Neathawk Dubuque & Packett

HIGHLIGHTS

August and September were the leading months for auto theft in Virginia in 2006, with more than 18% of thefts occurring in these two months. In 2006, the greatest number of thefts occurred in a four-month period including June and August to October, with more than 36% of reported thefts during this time.



Motor Vehicle Theft in Virginia increased from 15,022 offenses in 1987 to 21,284 offenses in 1991, a 42% increase. Since H.E.A.T. began in 1992, Motor Vehicle Thefts have decreased more than 30% compared to the base year of 1991.

Young people continue to make up a large portion of the arrests for Motor Vehicle Theft, with close to 40% of those arrested in 2006 residing in the 20 years old or younger age group.



The five year average (2002-2006) value of reported Motor Vehicle Thefts each year in Virginia is \$102,609,910. The five year average value per incident is \$6,123

In 2006, three areas of the state account for over 75% of the reported Motor Vehicle Thefts in Virginia: Tidewater - 29%; Northern Virginia - 24%; and Richmond - 22%.



Prior to 1999, crimes in Virginia were reported using the Summary System, which counts only the highest crime in an incident. In 1999, two methods were in place: the Summary System; and the Incident Based System (IBR), which counts all offenses in an incident, to a maximum of ten.

Beginning in 2000 and going forward, all information included in the *Crime in Virginia* reports are IBR data. Because of the change to the IBR System, it is impossible to compare some information to previous data. In some cases, 1999 data have been omitted from comparisons.

For more information and a further discussion of the two reporting systems, see the 1999 and 2000 editions of *Crime in Virginia*, which were compiled by the Uniform Crime Reporting Section of the Virginia Department of State Police.

The sources for all information in this analysis are the 1975 through 2006 editions of *Crime in Virginia*.

INCIDENCE - VIRGINIA MOTOR VEHICLE THEFT

Year	1975	1976	1977	1978	1979	1980	1981	1982	1983	1984	1985	1986
Number Thefts	13,449	11,330	11,623	11,776	12,792	12,111	10,956	10,100	9,861	10,337	11,226	12,702
Year-to-Year		-15.76%	2.59%	1.32%	8.63%	-5.32%	-9.54%	-7.81%	-2.37%	4.83%	8.60%	13.15%

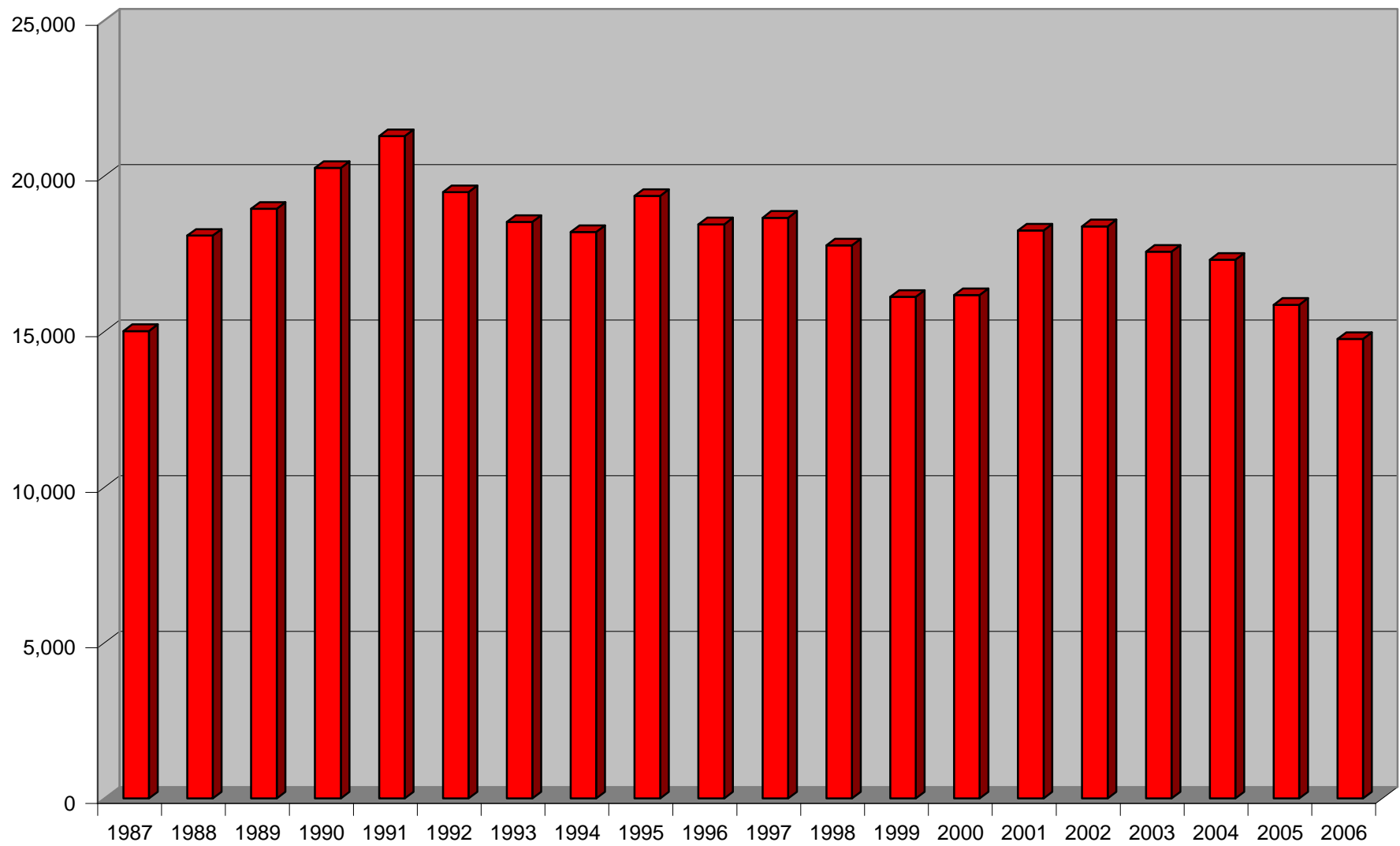
Year	1987	1988	1989	1990	1991	1992	1993	1994	1995	1996
Number Thefts	15,022	18,084	18,951	20,263	21,284	19,488	18,533	18,205	19,366	18,454
Increase/Decrease										
Year-to-Year	18.26%	20.38%	4.79%	6.92%	5.04%	-8.44%	-4.90%	-1.77%	6.38%	-4.71%
Since 1991						-8.44%	-12.93%	-14.47%	-9.01%	-13.30%

	1997	1998	1999	2000	2001	2002	2003	2004	2005	2006
Number Thefts	18,663	17,769	16,120	16,172	18,257	18,388	17,566	17,309	15,864	14,765
Increase/Decrease										
Year-to-Year	1.13%	-4.79%	-9.28%	0.32%	12.89%	0.72%	-4.47%	-1.46%	-8.35%	-6.93%
Since 1991	-12.31%	-16.51%	-24.26%	-24.02%	-14.22%	-13.61%	-17.47%	-18.68%	-25.47%	-30.63%

In the five years preceding the establishment of the Virginia State Police Help Eliminate Auto Theft (H.E.A.T.) Program, Motor Vehicle Theft in Virginia increased from 15,022 offenses in 1987 to 21,284 offenses in 1991, a 42% increase. Since H.E.A.T. began in 1992, Motor Vehicle Thefts have decreased 30.63% as compared to the base year of 1991. Motor Vehicle Thefts have decreased in 10 of the 15 years the H.E.A.T. Program has been in existence, and thefts have never risen above the peak year of 1991 or the previous year.

In 2006, there were 14,765 reported thefts, a decrease from the previous year of 1,099 thefts (6.93%). This is the first time in 20 years that motor vehicle thefts in the state of Virginia have been less than 15,000. In 1986, there were 12,702 thefts, which increased to 15,022 thefts in 1987.

Virginia Motor Vehicle Thefts



VIRGINIA VEHICLE THEFT RATE (Number of Thefts per 100,000 residents)

Year	Population	Vehicle Theft	Vehicle Theft Rate	% Inc (Dec)	% Inc (Dec) Since 1991
1975	5,056,000	13,149	260.1	-15.81%	
1976	5,132,500	11,330	220.8	-15.12%	
1977	5,205,400	11,623	223.3	1.15%	
1978	5,284,500	11,776	222.8	-0.20%	
1979	5,324,400	12,792	240.3	7.81%	
1980	5,346,818	12,111	226.5	-5.72%	
1981	5,444,100	10,956	201.2	-11.15%	
1982	5,492,800	10,100	183.9	-8.63%	
1983	5,564,700	9,861	177.2	-3.63%	
1984	5,643,900	10,337	183.2	3.36%	
1985	5,715,100	11,226	196.4	7.25%	
1986	5,811,700	12,702	218.6	11.27%	
1987	5,932,300	15,022	253.2	15.83%	
1988	6,036,900	18,084	299.6	18.30%	
1989	6,120,200	18,951	309.6	3.37%	
1990	6,187,358	20,263	327.5	5.76%	
1991	6,288,000	21,284	338.5	3.36%	
1992	6,394,500	19,488	304.8	-9.96%	-9.96%
1993	6,473,000	18,533	286.3	-6.05%	-15.41%
1994	6,551,400	18,205	277.9	-2.95%	-17.91%
1995	6,617,400	19,366	292.7	5.32%	-13.54%
1996	6,666,200	18,454	276.8	-5.41%	-18.22%
1997	6,737,500	18,663	277.0	0.06%	-18.16%
1998	6,789,200	17,769	261.7	-5.52%	-22.68%
1999	6,872,900	16,120	234.5	-10.39%	-30.71%
2000	7,078,515	16,172	228.5	-2.59%	-32.50%

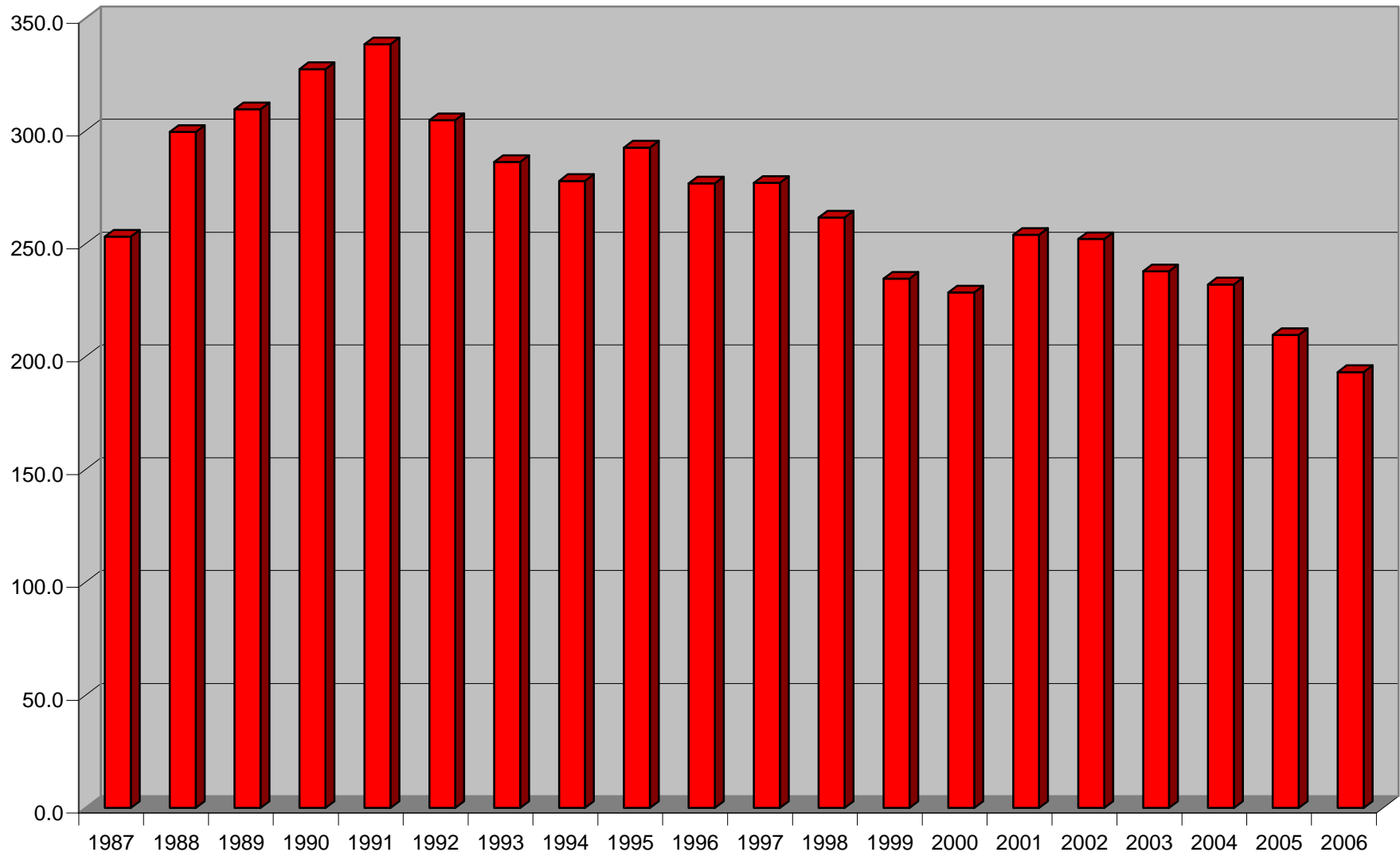
Analysis of 2006 Virginia Motor Vehicle Theft Statistics

Year	Population	Vehicle Theft	Vehicle Theft Rate	% Inc (Dec)	% Inc (Dec) Since 1991
2001	7,187,734	18,257	254.0	11.18%	-24.96%
2002	7,293,542	18,388	252.1	-0.74%	-25.52%
2003	7,386,300	17,566	237.8	-5.67%	-29.74%
2004	7,459,827	17,309	232.0	-2.43%	-31.45%
2005	7,567,465	15,864	209.6	-9.65%	-38.07%
2006	7,642,884	14,765	193.2	-7.85%	-42.93%

The Motor Vehicle Theft Rate (number of thefts per 100,000 residents) in Virginia increased from 253.2 in 1987 to 338.5 in 1991, a 34% increase. Since H.E.A.T. began in 1992, the Motor Vehicle Theft rate has decreased 42.93% as compared to the base year of 1991. The rate has decreased in 12 of the 15 years the H.E.A.T. Program has been in existence and has never risen above the peak year of 1991 or the two previous years.

In 2006, the rate was 193.2, a decrease of 7.85% from the previous year. This is the first time in 21 years that the theft rate has dropped below 200. In 1985, the theft rate was 196.4, which increased to 218.6 in 1986.

Virginia Motor Vehicle Theft Rate



INCIDENCE - VIRGINIA CRIME INDEX OFFENSES

	1987	1988	1989	1990	1991	1992	1993	1994	1995	1996	1997	1998	1999
Murder	437	468	480	545	584	563	539	570	501	496	484	407	346
Forcible Rape ¹	1,537	1,622	1,637	1,915	1,879	2,008	2,084	1,862	1,794	1,763	1,774	1,675	1,566
Robbery	6,244	6,748	6,494	7,626	8,651	8,787	9,216	8,680	8,717	8,145	8,336	7,023	6,165
Agg. Assault	9,196	9,102	10,451	11,621	12,345	12,548	12,322	12,464	12,917	12,236	12,457	12,322	11,578
Burglary	47,642	49,069	46,149	45,236	49,224	45,217	43,338	41,863	39,427	38,868	37,875	36,478	29,780
Larceny	153,690	165,343	172,640	187,564	195,652	185,506	181,104	180,789	181,306	183,243	178,898	165,268	157,758
M.V. Theft	15,022	18,084	18,951	20,263	21,284	19,488	18,533	18,205	19,366	18,454	18,663	17,769	16,120
Total	233,768	250,436	256,802	274,770	289,619	274,117	267,136	264,433	264,028	263,205	258,487	240,942	223,313
Increase/Decrease													
M.V. Theft		20.38%	4.79%	6.92%	5.04%	-8.44%	-4.90%	-1.77%	6.38%	-4.71%	1.13%	-4.79%	-9.28%
Crime Index		7.13%	2.54%	7.00%	5.40%	-5.35%	-2.55%	-1.01%	-0.15%	-0.31%	-1.79%	-6.79%	-7.32%

	2000	2001	2002	2003	2004	2005	2006
Murder	363	355	379	408	392	432	398
Forcible Rape	4,437	5,039	5,258	5,205	5,187	1,676	5,475
Robbery	5,741	6,609	6,865	6,576	6,908	7,486	7,761
Agg. Assault	9,487	11,345	11,677	11,143	11,312	10,189	11,664
Burglary	27,154	29,978	30,671	27,997	27,883	29,145	31,529
Larceny	149,936	169,460	175,997	165,177	157,060	156,038	145,854
M.V. Theft	16,172	18,257	18,388	17,566	17,309	15,864	14,765
Total	213,290	241,043	249,235	234,072	226,051	220,830	217,446
Increase/Decrease							
M.V. Theft	0.32%	12.89%	0.72%	-4.47%	-1.46%	-8.35%	-6.93
Crime Index	-4.49%	13.01%	3.40%	-6.08%	-3.43%	-2.31%	-1.53

The Crime Index decreased in 2006, with 217,446 reported offenses as compared to the 220,830 offenses in 2005. This was a 1.53% decrease, which was less than the 6.93% decrease in Motor Vehicle Thefts.

¹Data for 2000 forward are for Forcible Sex Offenses.

CLEARANCE RATE - VIRGINIA MOTOR VEHICLE THEFT

	1988	1989	1990	1991	1992	1993	1994	1995	1996	1997	1998
Motor Vehicle Theft	31.4%	32.5%	29.6%	27.9%	30.5%	28.9%	29.4%	27.3%	27.8%	24.1%	23.7%
Crime Index	26.6%	27.8%	26.4%	26.2%	27.7%	26.1%	25.6%	25.2%	25.3%	24.2%	24.6%

Clearance Rate information has not been included in *Crime in Virginia* since the 1999 edition. The 2002 edition notes: “This report no longer publishes clearance rates. The IBR system does not accurately reflect the volume of clearances each department produces in a given year. Additionally, the number of arrests in a jurisdiction does not provide offense clearance information in that one person arrested could clear a number of different offenses.”

SEASONALITY - VIRGINIA MOTOR VEHICLE THEFT

Mon	1988	1989	1990	1991	1992	1993	1994	1995	1996	1997	1998	2000	2001	2002	2003	2004	2005	2006	5 Yr. Avg.	% of Total
Aug	1,898	1,887	2,084	1,952	1,940	1,975	1,793	1,887	1,839	1,796	1,672	1,596	2,004	1,653	1,734	1,676	1,586	1,495	1,629	9.71%
Jul	1,650	1,916	1,925	2,067	1,785	1,669	1,744	1,922	1,820	1,719	1,589	1,439	1,736	1,785	1,705	1,639	1,543	1,317	1,598	9.52%
Sep	1,674	1,659	1,784	1,796	1,618	1,757	1,434	1,652	1,639	1,654	1,598	1,326	1,611	1,543	1,500	1,386	1,569	1,338	1,467	8.74%
Jun	1,445	1,583	1,586	1,792	1,414	1,556	1,591	1,682	1,554	1,577	1,537	1,360	1,596	1,645	1,417	1,547	1,349	1,331	1,458	8.69%
Oct	1,716	1,705	1,885	1,890	1,599	1,648	1,437	1,641	1,670	1,721	1,612	1,343	1,829	1,528	1,494	1,454	1,406	1,333	1,443	8.60%
May	1,344	1,507	1,464	1,609	1,652	1,459	1,542	1,507	1,409	1,460	1,459	1,436	1,465	1,621	1,438	1,510	1,265	1,178	1,402	8.36%
Jan	1,568	1,581	1,726	1,862	1,631	1,702	1,434	1,520	1,501	1,574	1,487	1,465	1,338	1,548	1,445	1,444	1,239	1,220	1,379	8.22%
Nov	1,483	1,570	1,724	1,803	1,723	1,548	1,471	1,409	1,480	1,615	1,408	1,257	1,562	1,415	1,453	1,297	1,275	1,248	1,338	7.97%
Mar	1,209	1,418	1,496	1,704	1,490	1,245	1,508	1,649	1,491	1,404	1,367	1,208	1,344	1,505	1,478	1,387	1,182	1,132	1,337	7.97%
Apr	1,235	1,284	1,436	1,453	1,411	1,325	1,497	1,435	1,265	1,397	1,422	1,282	1,315	1,580	1,352	1,328	1,201	1,129	1,318	7.86%
Dec	1,532	1,573	1,730	1,855	1,728	1,365	1,509	1,565	1,441	1,437	1,406	1,194	1,388	1,376	1,376	1,241	1,249	1,073	1,263	7.53%
Feb	1,330	1,268	1,423	1,501	1,497	1,284	1,245	1,497	1,345	1,309	1,212	1,266	1,069	1,189	1,174	1,400	1,000	971	1,147	6.83%
Tot	18,084	18,951	20,263	21,284	19,488	18,533	18,205	19,366	18,454	18,663	17,769	16,172	18,257	18,388	17,566	17,309	15,864	14,765	16,778	100.00%

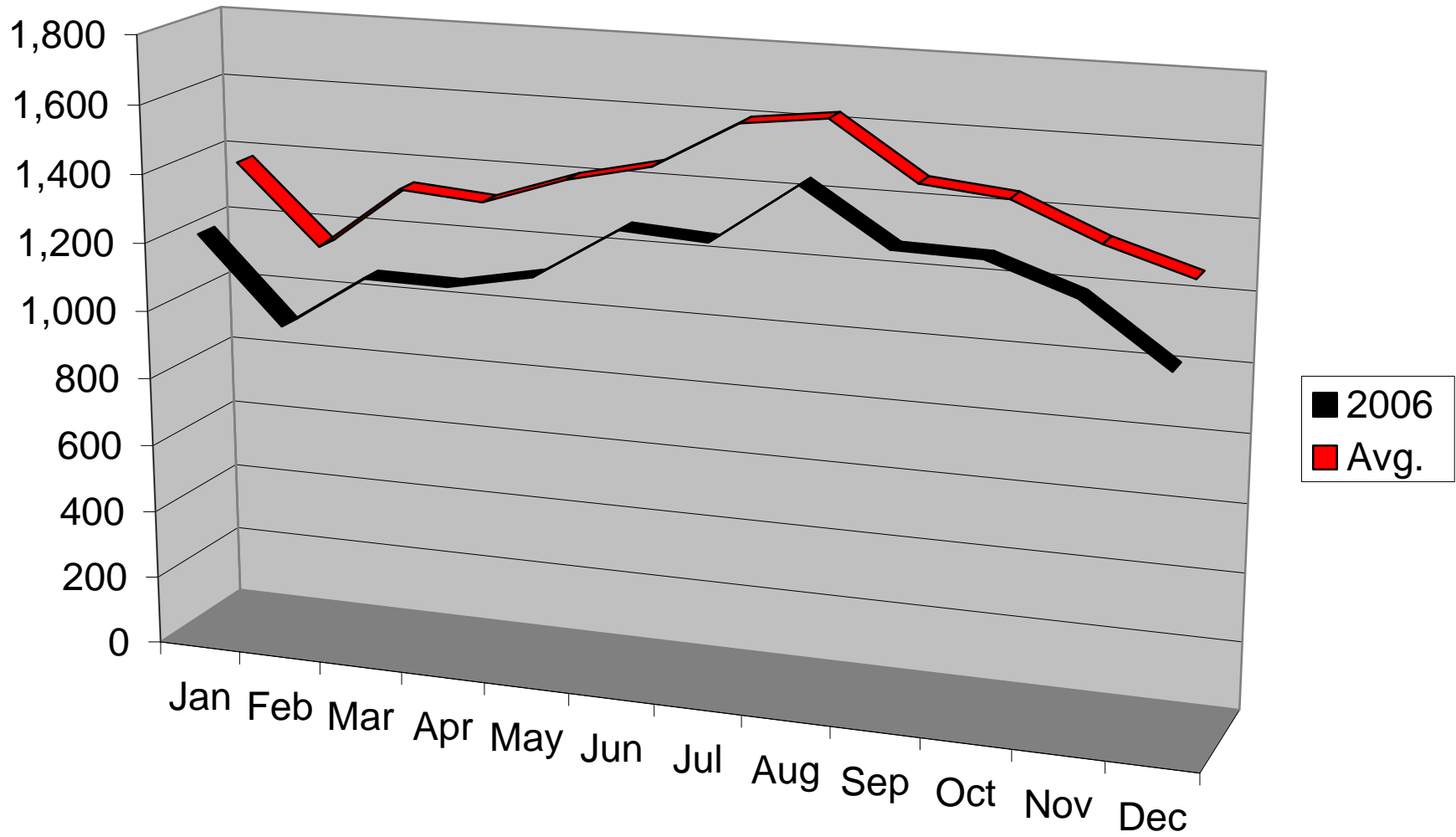
In 2006, August and September were the leading months for Motor Vehicle Theft, with more than 19% (19.19%) of reported thefts in this two-month period. August was the highest month with 1,495 thefts. To place these figures in perspective, these two months represent a little over 18% (18.26%) of the year.

In 2006, the greatest number of Motor Vehicle Thefts occurred in a four-month period, which included June and July, August and September, with over 37% (36.23%) of reported thefts during this time. To place these figures in perspective, these four months represent over 36% (36.53%) of the year.

The 2006 experience is slightly different from past years. As noted above, in 2006, August and September had the greatest number of thefts, which is different than the past five years average (2002-2006) when August and July were the two highest months. On average, August was the highest month with 1,629 thefts as is the case in 2006 with 1,495 thefts. On average, July was second with 1,598 thefts, while in 2006, September was second with 1,338 thefts.

Note: 1999 data omitted in order to make comparisons more relevant.

Virginia Motor Vehicle Thefts by Month



AGE OF OFFENDERS - VIRGINIA MOTOR VEHICLE THEFT ARRESTS

Age	1987	1988	1989	1990	1991	1992	1993	1994	1995	1996
12 & under	43	57	65	66	90	77	58	82	63	50
13 - 17	985	1,556	1,733	1,794	1,788	1,687	1,587	1,686	1,547	1,342
18 - 20	519	654	725	644	696	569	511	531	523	506
21 - 24	449	537	540	491	456	448	403	374	367	359
25 - 29	326	389	466	403	389	357	410	413	380	390
30 - 34	178	236	292	255	304	233	290	332	335	338
35 - 39	115	167	154	124	147	173	179	191	182	221
40 & over	131	161	166	125	162	147	145	183	197	208
TOTAL	2,746	3,757	4,141	3,902	4,032	3,691	3,583	3,792	3,594	3,414

Age	1997	1998	1999	2000	2001	2002	2003	2004	2005	2006	Avg.	% of Total
12 & under	41	28	35	13	17	12	10	11	7	10	42	1.5%
13 - 17	1,407	1,117	673	485	495	485	383	405	346	251	1,088	39.7%
18 - 20	427	445	305	321	316	309	269	273	242	198	449	16.4%
21 - 24	248	318	153	193	168	169	193	184	187	164	320	11.7%
25 - 29	286	284	180	148	144	148	126	136	154	139	283	10.4%
30 - 34	297	321	170	186	161	136	136	126	125	105	228	8.3%
35 - 39	212	262	142	146	126	136	114	136	129	114	159	5.8%
40 & over	192	238	133	139	151	163	168	174	199	198	169	6.2%
TOTAL	3,110	3,013	1,791	1,631	1,578	1,558	1,399	1,445	1,389	1,179	2,737	100.0%

Analysis of 2006 Virginia Motor Vehicle Theft Statistics

Age	1987	1988	1989	1990	1991	1992	1993	1994	1995	1996
20 & under	1,547	2,267	2,523	2,504	2,574	2,333	2,156	2,299	2,133	1,898
% of Total	56.3%	60.3%	60.9%	64.2%	63.8%	63.2%	60.2%	60.6%	59.4%	55.6%
21 & over	1,199	1,490	1,618	1,398	1,458	1,358	1,427	1,493	1,460	1,516
% of Total	43.7%	39.7%	39.1%	35.8%	36.2%	36.8%	39.8%	39.4%	40.6%	44.4%
Total	2,746	3,757	4,141	3,902	4,032	3,691	3,583	3,792	3,593	3,414

Age	1997	1998	1999	2000	2001	2002	2003	2004	2005	2006	Total	% of Total
20 & under	1,875	1,590	1,013	819	828	806	662	689	595	459	31,111	59.6%
% of Total	60.3%	52.8%	56.6%	50.2%	52.5%	51.7%	47.7%	47.7%	42.8%	38.9%	59.6%	
21 & over	1,235	1,423	778	812	750	752	727	756	794	720	22,444	43.0%
% of Total	39.7%	47.2%	43.4%	49.8%	47.5%	48.3%	52.3%	52.3%	57.2%	61.1%	43.0%	
Total	3,110	3,013	1,791	1,631	1,578	1,558	1,389	1,445	1,389	1,179	52,166	100.0%

Age	1987	1988	1989	1990	1991	1992	1993	1994	1995	1996
20 & under	1,547	2,267	2,523	2,504	2,574	2,333	2,156	2,299	2,133	1,898
% Inc(Dec)		46.54%	11.29%	-0.75%	2.80%	-9.3%	-7.59%	6.63%	-7.22%	-11.0%
21 & over	1,199	1,490	1,618	1,398	1,458	1,358	1,427	1,493	1,460	1,516
% Inc(Dec)		24.27%	8.59%	-13.60%	4.29%	-6.86%	5.08%	4.63%	-2.21%	3.8%
Total	2,746	3,757	4,141	3,902	4,032	3,691	3,583	3,792	3,593	3,414
% Inc(Dec)		36.82%	10.22%	-5.77%	3.33%	-8.46%	-2.93%	5.83%	-5.25%	-4.98%

Age	1997	1998	1999	20'00	20'01	2002	2003	2004	2005	2006	Total	% of Total
20 & under	1,875	1,590	1,013	819	828	806	662	689	595	459	31,111	59.6%
% Inc(Dec)		-1.2%	-15.2%	-36.3%	-19.2%	1.1%	-2.7%	-17.9%	4.1%	-13.6%	-22.9%	
21 & over	1,235	1,423	778	812	750	752	727	756	794	720	22,444	43.0%
% Inc(Dec)		-18.5%	15.2%	-45.3%	4.4%	-7.6%	0.3%	-3.3%	4.0%	5.0%	-9.3%	
Total	3110	3013	1791	1631	1578	1558	1389	1445	1389	1,179	52,166	100.0%
% Inc(Dec)		-8.90%	-3.12%	-40.56%	-8.93%	-3.25%	-1.27%	-10.85%	4.0%	-3.9%	-15.1%	

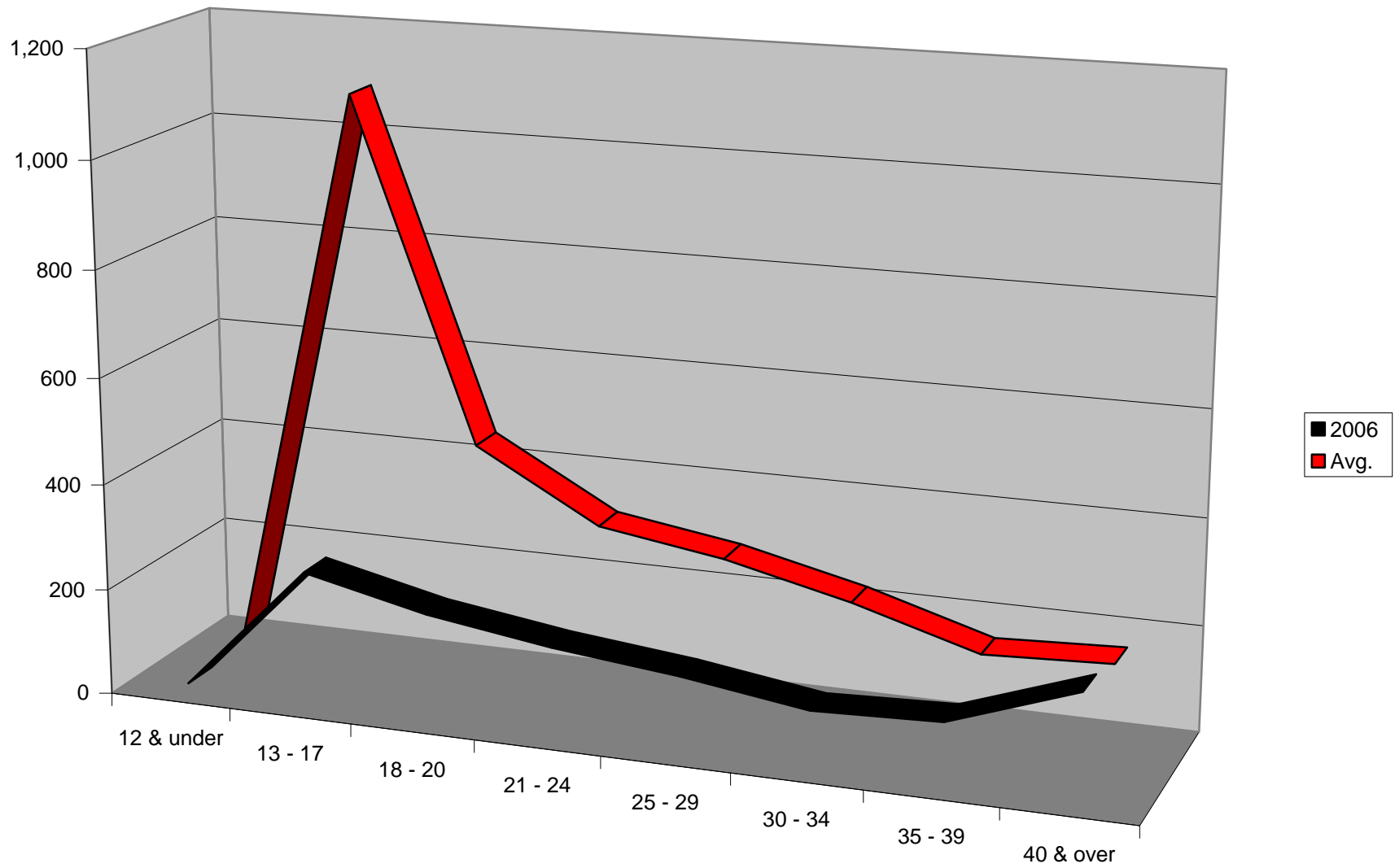
On average (1987-2006), 59.6% of the people arrested for Motor Vehicle Theft in Virginia were 20 years old or younger. (Information for 2006 is reported separately on the next page.)

AGE OF OFFENDERS - VIRGINIA MOTOR VEHICLE THEFT ARRESTS, Continued

Age	2006	% of Total	Cum.
12 & under	10	0.8%	0.8%
13 - 17	251	21.3%	22.1%
18 - 20	198	16.8%	38.9%
21 - 24	164	13.9%	52.8%
25 - 29	139	11.8%	64.6%
30 - 34	105	8.9%	73.5%
35 - 39	114	9.7%	83.2%
40 & over	198	16.8%	100.0%
TOTAL	1,179	100.0%	

Close to 40% (38.9%) of the people arrested for Motor Vehicle Theft in Virginia in 2006 were 20 years old or younger. This is the lowest percentage for this age category in the 20-year time period (1987-2006) covered by this report. This is a decrease in the arrest pattern during the 1987 through 2006 period when an average of 59.6% of the arrests were of people 20 years old or younger (see previous page). In fact, arrests of people 20 years old or younger have been less than 53% in eight of the last nine years (1998, 2000, 2001, 2002, 2003, 2004, 2005 and 2006).

Virginia Arrests for Motor Vehicle Theft by Age



VALUE OF PROPERTY STOLEN - VIRGINIA MOTOR VEHICLE THEFT

1987	1988	1989	1990	1991	1992	1993	1994	1995	1996
\$77,788,249	\$102,675,739	\$111,911,694	\$115,273,346	\$113,933,893	\$106,006,275	\$99,250,780	\$102,689,284	\$127,668,582	\$126,860,726
	31.99%	9.00%	3.00%	-1.16%	-6.96%	-6.37%	3.46%	24.33%	-0.63%

1997	1998	2000	2001	2002	2003	2004	2005	2006
\$127,775,309	\$123,859,005	\$105,422,963	\$109,309,561	\$111,721,528	\$106,689,725	\$105,735,129	\$93,565,797	\$95,337,370
0.72%	-3.06%	-14.88%	3.69%	2.21%	-4.50%	-0.89%	-11.51%	1.89%
Five Year Average								\$102,609,910

The “Value of Property Stolen – Virginia Motor Vehicle Theft” in 2006 was \$95,337,370 an increase of 1.89% as compared to 2005.

Note: 1999 data omitted in order to make comparisons more relevant.

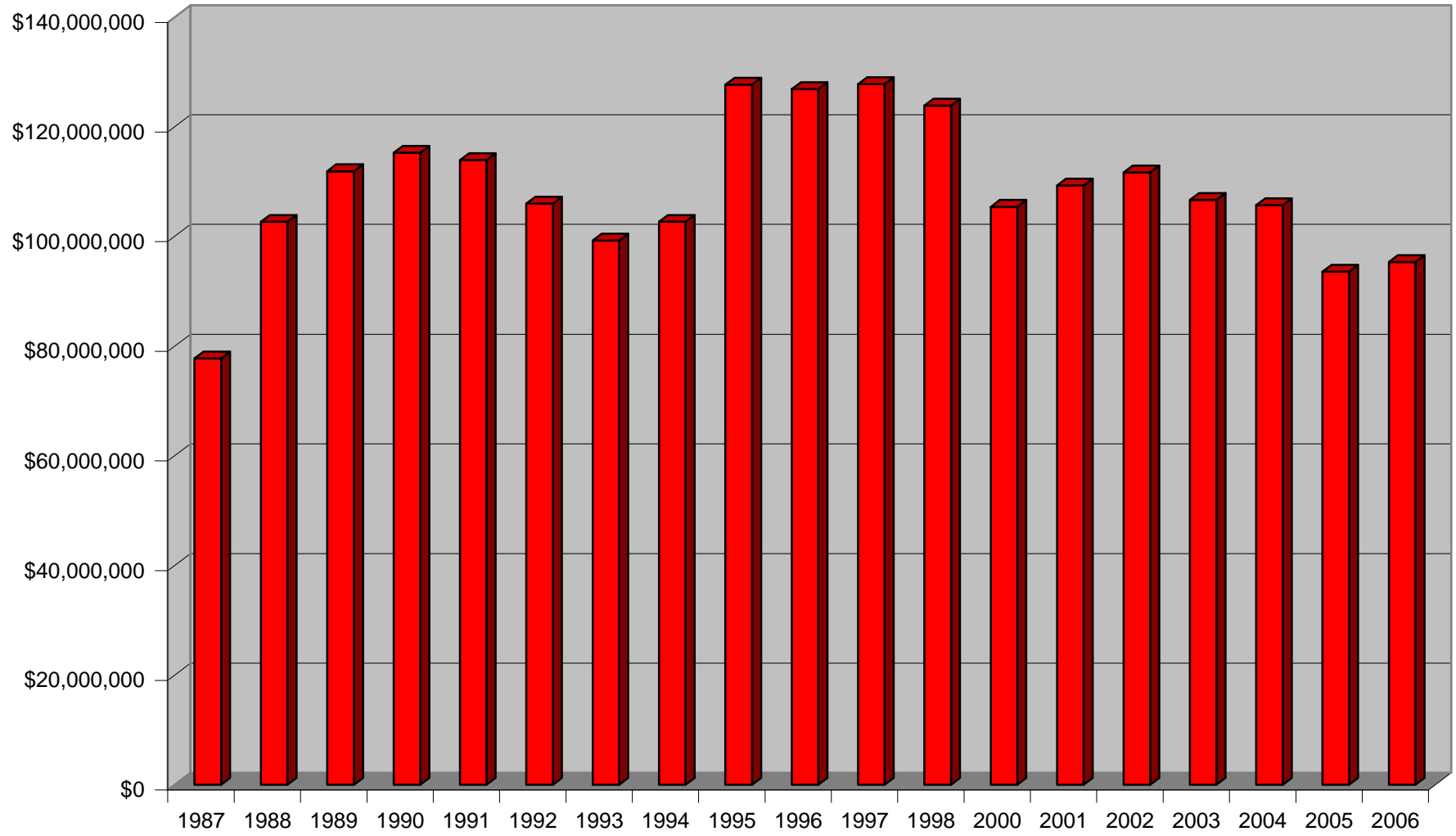
AVERAGE VALUE PER INCIDENT - VIRGINIA MOTOR VEHICLE THEFT

1987	1988	1989	1990	1991	1992	1993	1994	1995	1996
\$5,178	\$5,678	\$5,905	\$5,689	\$5,353	\$5,440	\$5,355	\$5,641	\$6,592	\$6,874
	9.64%	4.01%	-3.67%	-5.90%	1.62%	-1.55%	5.33%	16.87%	4.28%

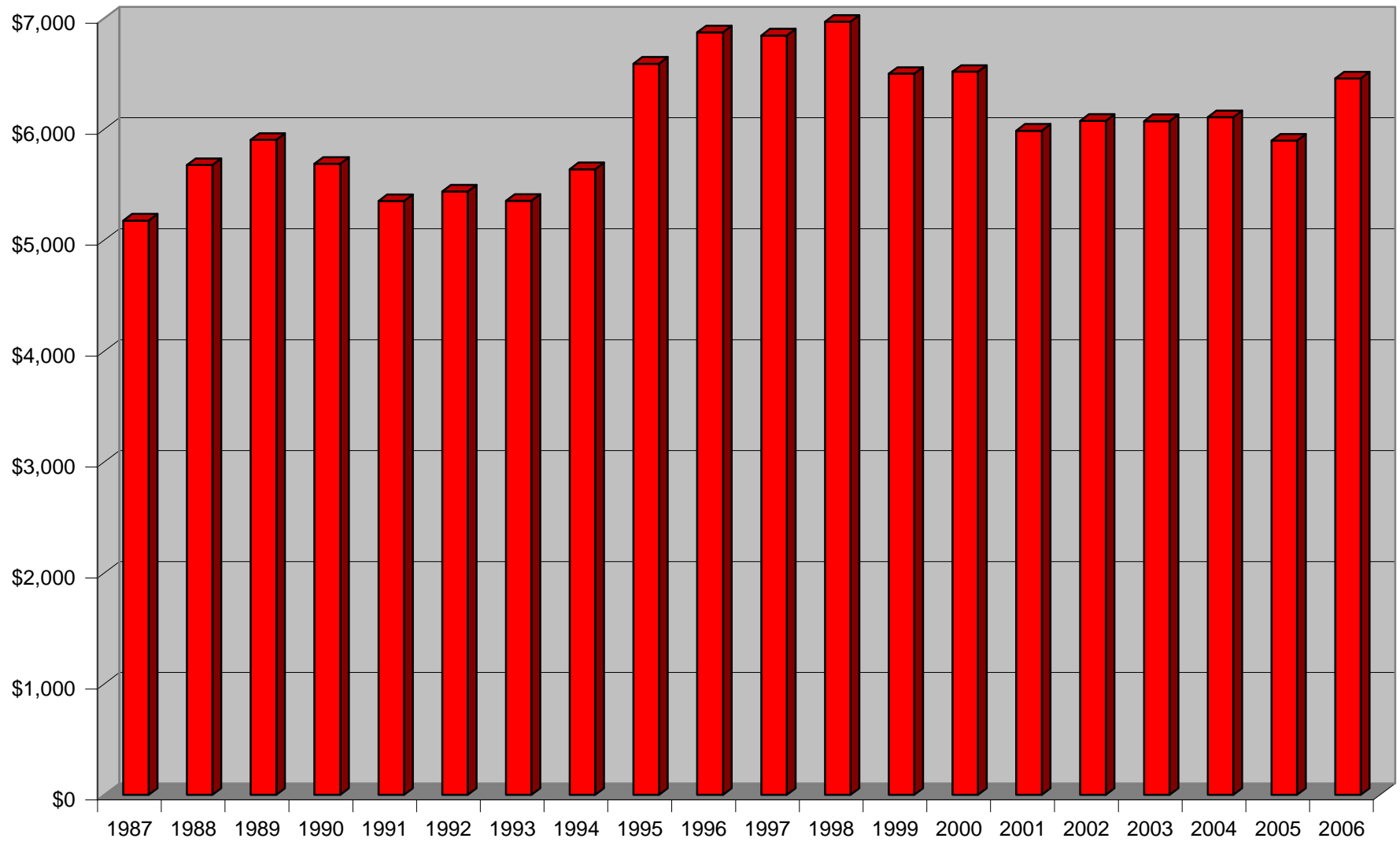
1997	1998	1999	2000	2001	2002	2003	2004	2005	2006
\$6,846	\$6,971	\$6,501	\$6,519	\$5,987	\$6,076	\$6,074	\$6,109	\$5,898	\$6,457
-0.41%	1.81%	-6.74%	0.28%	-8.15%	1.48%	-0.04%	0.58%	-3.45%	9.48%
Five Year Average									\$6,123

The average value per incident in 2006 increased from \$5,898 in 2005 to \$6,457 in 2006, a 9.48% increase.

Value of Property Stolen - Virginia Motor Vehicle Theft



Virginia Motor Vehicle Theft - Average Value per Incident



LOCATION (BY TYPE OF JURISDICTION) - VIRGINIA MOTOR VEHICLE THEFT

Location	1987	1988	1989	1990	1991	1992	1993	1994	1995	1996	1997
County	6,917	7,808	7,675	7,123	7,503	6,986	6,760	7,084	7,580	7,965	7,784
City	8,042	10,215	11,226	12,909	13,625	12,356	11,577	10,937	11,626	10,423	10,693
College	60	48	35	77	71	56	49	54	62	29	56
Other	3	13	15	154	85	90	147	130	98	37	130
Totals	15,022	18,084	18,951	20,263	21,284	19,488	18,533	18,205	19,366	18,454	18,663

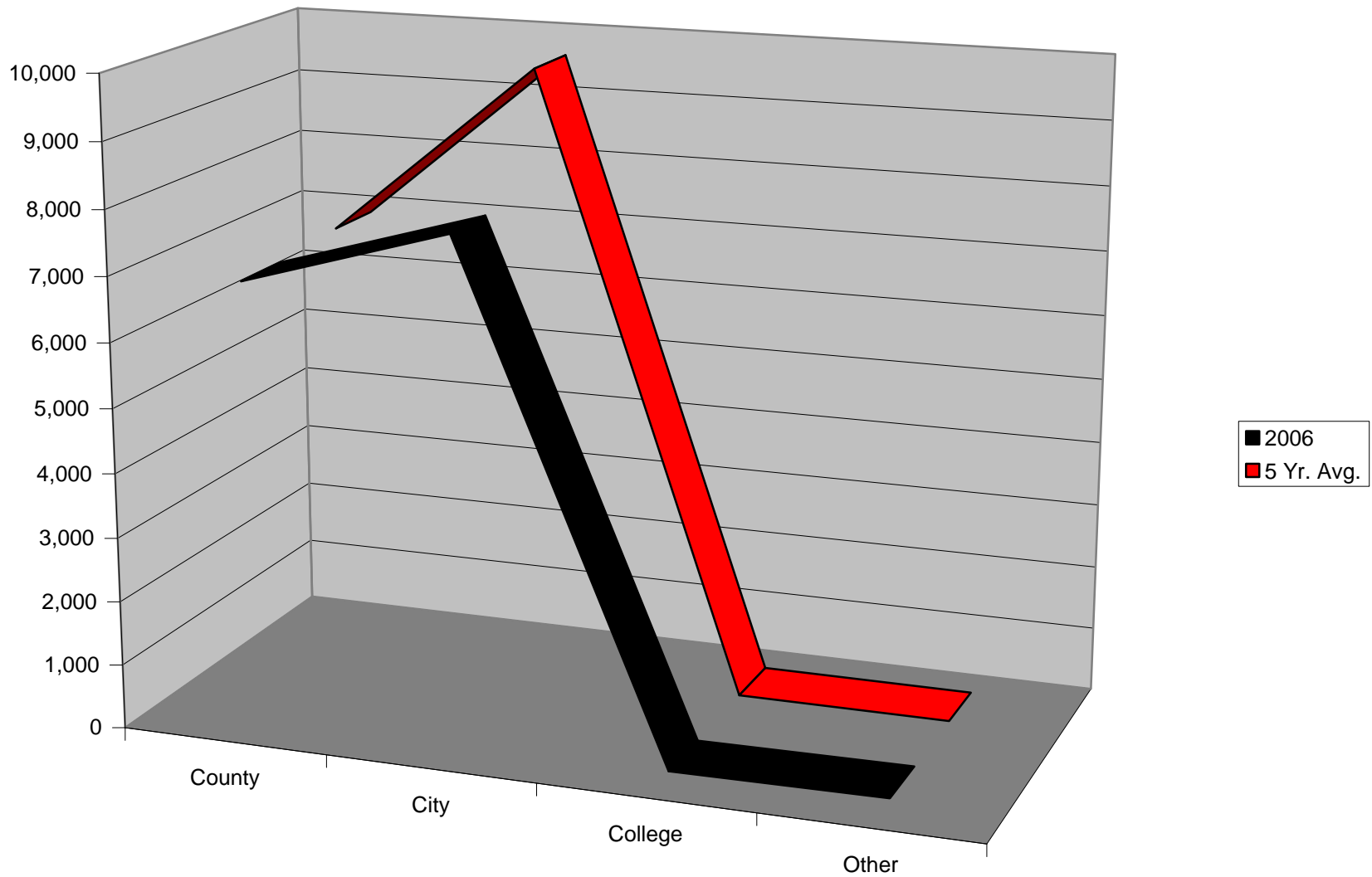
Location	1998	1999	2000	2001	2002	2003	2004	2005	2006	5 yr. Avg.	% of Total
County	7,348	7,025	5,485	6,404	6,983	7,262	7,778	5,939	6,844	6,961	41.49%
City	10,259	9,110	10,569	11,657	11,259	10,149	9,403	9,741	7,810	9,672	57.65%
College	37	30	46	64	66	77	110	59	38	70	0.42%
Other	125	58	72	132	80	78	18	125	73	75	0.45%
Total	17,769	16,223	16,172	18,257	18,388	17,566	17,309	15,864	14,765	16,778	100.00%

Note: "Average" and "% of Total" figures are based on 1987 through 2003 data. The information is shown as two tables because of the limitation of the page size.

Over 50% of reported Motor Vehicle Thefts in Virginia occur in cities (57.65% for the 2002-2006 five-year average; 52.90% for 2006). Another 40% (41.49% for the 2002-2006 average; 46.35% for 2006) occur in counties (includes towns). The remaining thefts occur in colleges and other locations such as airports.

Note: 1999 thefts by location data were slightly different than total reported thefts (16,120 total vs. 16,223 total when counted by area).

Virginia Motor Vehicle Thefts by Location



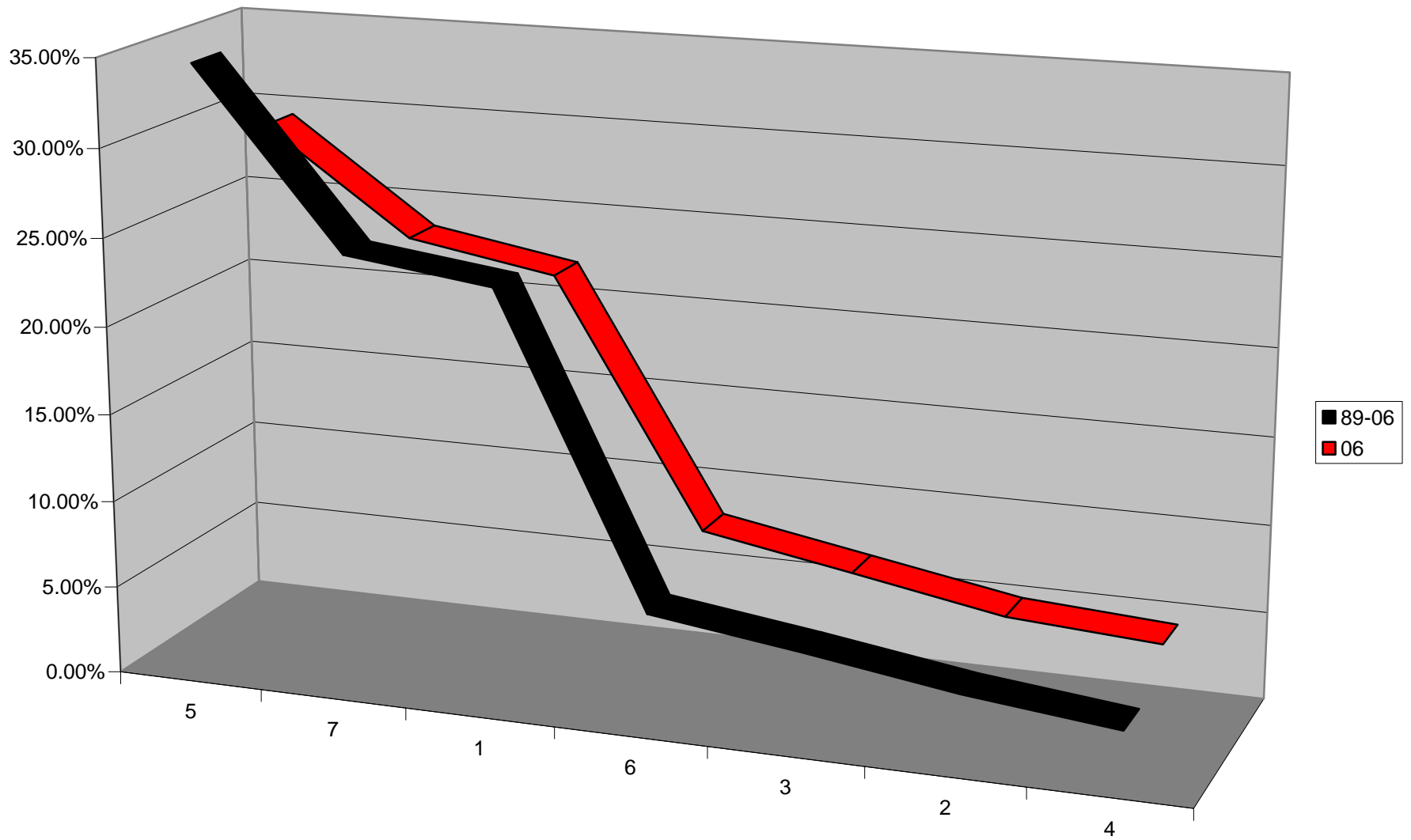
LOCATION (BY VSP DIVISION) - VIRGINIA MOTOR VEHICLE THEFT

Division	89-06 Thefts	% of Total	Cumulative
5	112,433	34.54%	34.54%
7	79,898	24.54%	59.08%
1	76,333	23.45%	82.53%
6	19,821	6.09%	88.62%
3	16,111	4.95%	93.57%
2	11,958	3.67%	97.25%
4	8,966	2.75%	100.00%
Total	325,520		

Division	2006 Thefts	% of Total	Cumulative
5	4,355	29.50%	29.50%
7	3,485	23.60%	53.10%
1	3,270	22.15%	75.25%
6	1,214	8.22%	83.47%
3	991	6.71%	90.18%
2	766	5.19%	95.37%
4	684	4.63%	100.00%
Total	14,765		

On average (1989-2006), three areas of the state account for over 82% (82.53%) of the reported Motor Vehicle Thefts in Virginia: Tidewater - 35% [34.54%] (Virginia State Police Division 5); Northern Virginia - 25% [24.54%] (Virginia State Police Division 7); and Richmond - 23% [23.45%] (Virginia State Police Division 1).

Thefts by Division (as a % of total thefts)



CHANGE BY DIVISION FROM '04 TO '05 - VIRGINIA MOTOR VEHICLE THEFT

Div.	2004 Thefts	2005 Thefts	Difference	% Change	% of Total Increase/Decrease
1	4,368	3,270	-1,098	-25.14%	-99.91%
2	622	766	144	23.15%	13.10%
3	935	991	56	5.99%	5.10%
4	634	684	50	7.89%	4.55%
5	4,928	4,355	-573	-11.63%	-52.14%
6	1,191	1,214	23	1.93%	2.09%
7	3,186	3,485	299	9.38%	27.21%
Total	15,864	14,765	-1,099	-6.93%	

Two divisions, Divisions 1 and 5, posted decreases in 2006, with Division 1 racking up a decrease of over 1,000 (25.14%). Five divisions, Divisions 2, 3, 4, 6 and 7 each had increases, ranging from a low of 23 thefts (1.93%) in Division 6 to a high of 299 incidents (9.38%) in Division 7.

Note: Additional analysis for each of the seven divisions follows.



Analysis of 2006 Virginia Motor Vehicle Theft Statistics

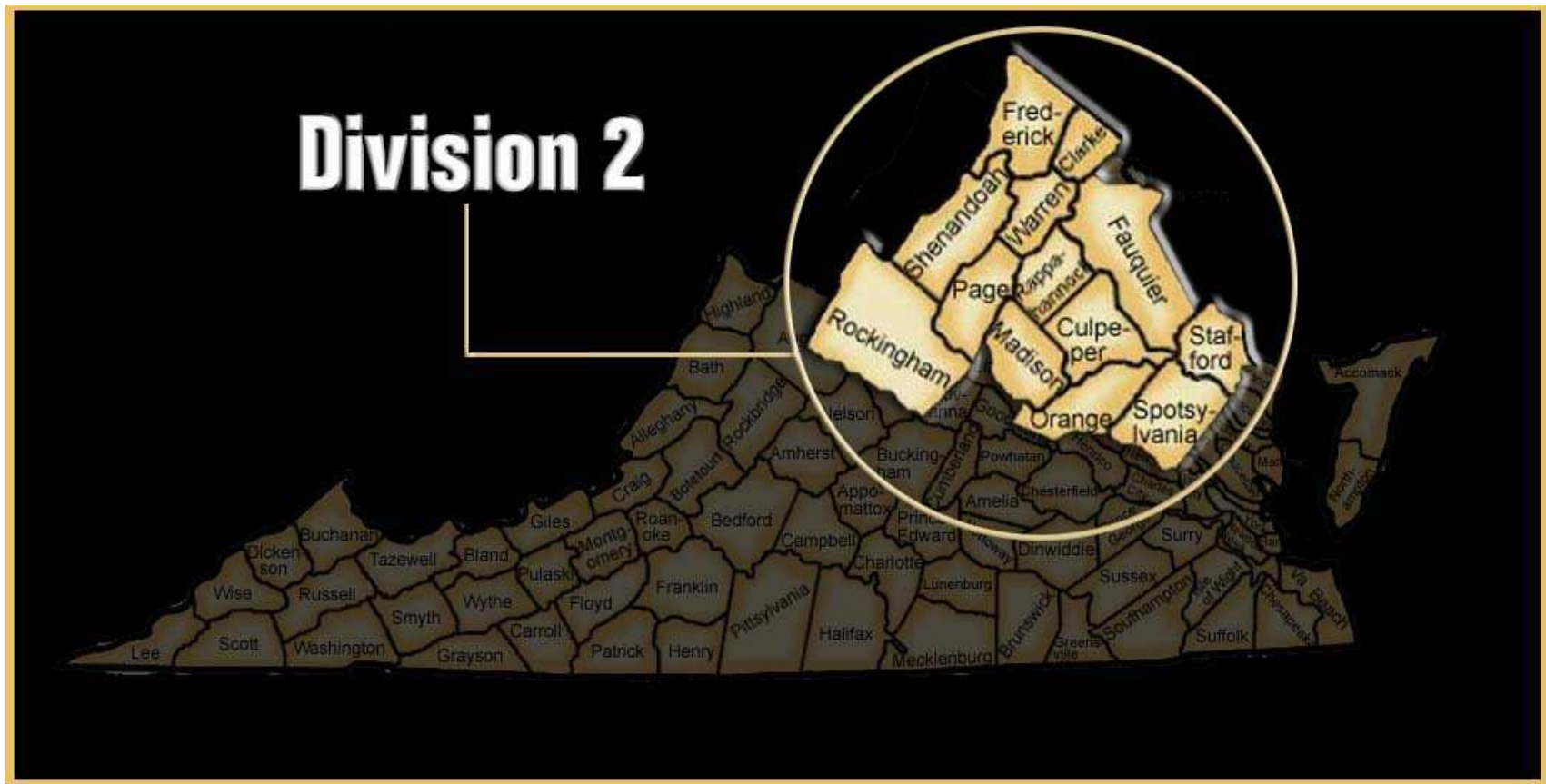
DETAIL BY AREA FOR DIVISION 1 - VIRGINIA MOTOR VEHICLE THEFT

Area	1999 Thefts	2000 Thefts	2001 Thefts	2002 Thefts	2003 Thefts	2004 Thefts	2005 Thefts	2006 Thefts	Differe nce	% Change
Amelia Co.	5	3	11	8	7	14	10	8	-2	-20.00%
Caroline Co. (Bowling Green)	40	28	25	14	24	33	12	15	3	25.00%
Charles City Co.	2	1	3	6	3	2	0	5	5	
Chesterfield Co.	730	465	467	475	477	515	570	466	-104	-18.25%
Dinwiddie Co. (McKinney)	40	44	31	32	21	58	31	47	16	51.61%
Essex Co. (Tappahannock)	19	22	18	17	9	9	18	20	2	11.11%
Goochland Co.	16	9	15	12	15	24	17	11	-6	-35.29%
Hanover Co. (Ashland)	50	54	53	75	76	85	60	57	-3	-5.00%
Henrico Co.	789	783	879	826	784	839	726	616	-110	-15.15%
King & Queen Co.	3	0	0	0	1	0	2	2	0	0.00%
King George Co.	20	19	24	35	23	28	18	26	8	44.44%
King William Co.	15	12	6	1	2	9	5	6	1	20.00%
Lancaster Co. (Kilmarnock)	6	4	11	7	9	4	5	1	-4	-80.00%
Louisa Co. (Louisa)	21	19	16	21	9	26	17	25	8	47.06%
New Kent Co. (West Point)	12	13	13	28	13	14	22	21	-1	-4.55%
Northumberland Co.	5	6	5	16	13	12	6	6	0	0.00%
Nottoway Co. (Blackstone; Crewe; Burkeville)	13	16	20	5	14	27	23	22	-1	-4.35%
Powhatan Co.	5	16	17	18	22	25	24	16	-8	-33.33%
Richmond Co. (Warsaw)	6	5	7	8	13	7	6	16	10	166.67%
Westmoreland Co. (Colonial Beach)	17	26	20	28	30	19	24	18	-6	-25.00%
Colonial Heights	41	39	39	45	26	37	45	32	-13	-28.89%
Hopewell	16	105	140	100	77	127	148	125	-23	-15.54%
Petersburg	275	299	324	284	221	394	296	218	-78	-26.35%
Richmond	2,101	2,695	3,091	2,548	2,728	2,417	2,249	1,476	-773	-34.37%
VCU PD	5	11	6	6	11	13	17	10	-7	-41.18%
U of R PD	4	1	3	2	4	2	3	0	-3	-100.00%
Capitol PD	6	0	2	2	2	4	0	1	1	
RIC Airport PD	10	9	14	4	12	11	13	4	-9	-69.23%
SS VA Training Center	0	2	4	0	1	0	1	0	-1	-100.00%
VA Dept Alc. Bev. Control	1	0	1	0	0	0	0	0	0	
TOTAL	4,273	4,706	5,265	4,623	4,647	4,755	4,368	3,270	-1,098	-25.14%

There were 1,098 fewer Motor Vehicle Thefts in Division 1 in 2006 than in 2005, a 25.14% decrease.

The Richmond metropolitan area had a substantial decrease in auto thefts – City of Richmond a decrease of 773 thefts (34.37%); Henrico County a decrease of 110 thefts (15.15%); and Chesterfield County a decrease of 104 thefts (18.25%). The City of Richmond, however, with 1,476 thefts, still has the highest number of thefts in the state. The second and third highest numbers of reported thefts were in Fairfax County (1,441 thefts) and Norfolk (1,024 thefts).

The Tri-Cities area also had a decrease in thefts – Petersburg a decrease of 78 thefts (26.35%); Hopewell a decrease of 23 thefts (15.54%); and Colonial Heights a decrease of 13 thefts (28.89%).



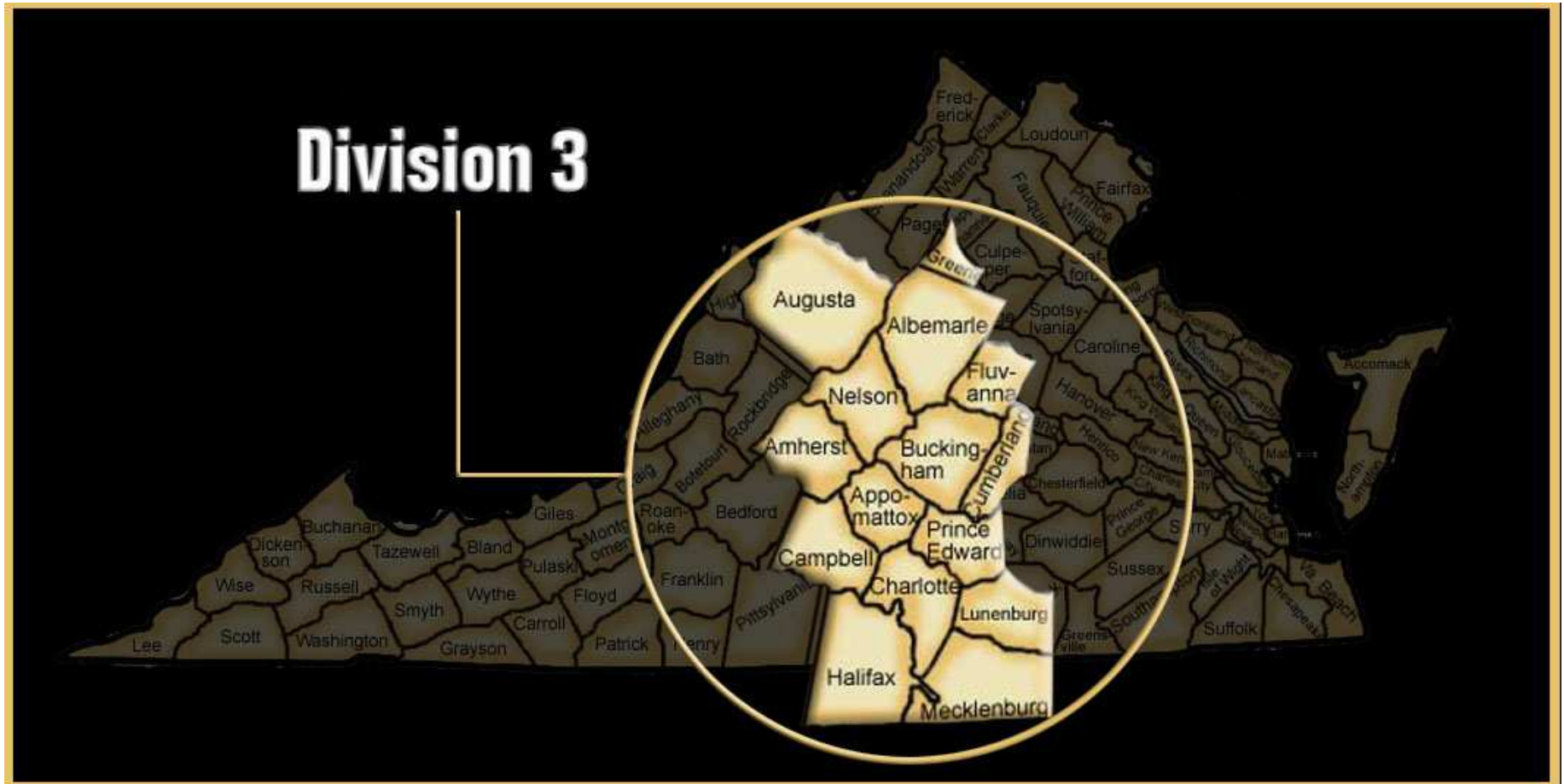
DETAIL BY AREA FOR DIVISION 2 - VIRGINIA MOTOR VEHICLE THEFT

Area	1999 Thefts	2000 Thefts	2001 Thefts	2002 Thefts	2003 Thefts	2004 Thefts	2005 Thefts	2006 Thefts	Difference	% Change
Clarke Co. (Berryville)	16	12	17	15	22	18	12	12	0	0.00%
Culpeper Co. (Culpeper)	26	0	19	32	30	33	28	33	5	17.86%
Fauquier Co. (Warrenton)	55	35	47	53	60	41	41	50	9	21.95%
Frederick Co. (Middletown; Stephens City)	96	93	105	92	95	105	110	143	33	30.00%
Madison Co.	9	8	12	3	1	2	7	11	4	57.14%
Orange Co. (Orange; Gordonsville)	20	8	21	31	28	27	16	21	5	31.25%
Page Co. (Luray; Shenandoah; Stanley)	20	8	20	23	5	6	23	25	2	8.70%
Rappahannock Co.	4	5	6	0	0	7	5	4	-1	-20.00%
Shenandoah Co. (Edinburg; Mt. Jackson; Woodstock; Strasburg; New Market)	27	33	24	37	26	25	27	26	-1	-3.70%
Spotsylvania Co.	114	95	96	82	94	84	90	67	-23	-25.56%
Stafford Co.	148	160	117	142	152	109	69	160	91	131.88%
Warren Co. (Front Royal)	74	68	71	56	56	57	65	62	-3	-4.62%
Fredericksburg	31	75	65	86	77	76	64	77	13	20.31%
Winchester	40	54	57	44	50	59	65	75	10	15.38%
Univ of Mary Wash PD	1	2	1	0	0	0	0	0	0	
TOTAL	744	656	678	696	696	649	622	766	144	23.15%

Division 2 had 144 more auto thefts in 2006 than in 2005, a 23.15% increase, the largest increase on a percentage basis of all the Divisions.

The largest increases were in Stafford County (91 thefts, 131.88%), followed by Frederick County, including Middletown and Stephens City (33 thefts; 30.00%).

The largest decrease in the Division in absolute numbers of thefts occurred in Spotsylvania County (23 thefts; 25.56%).

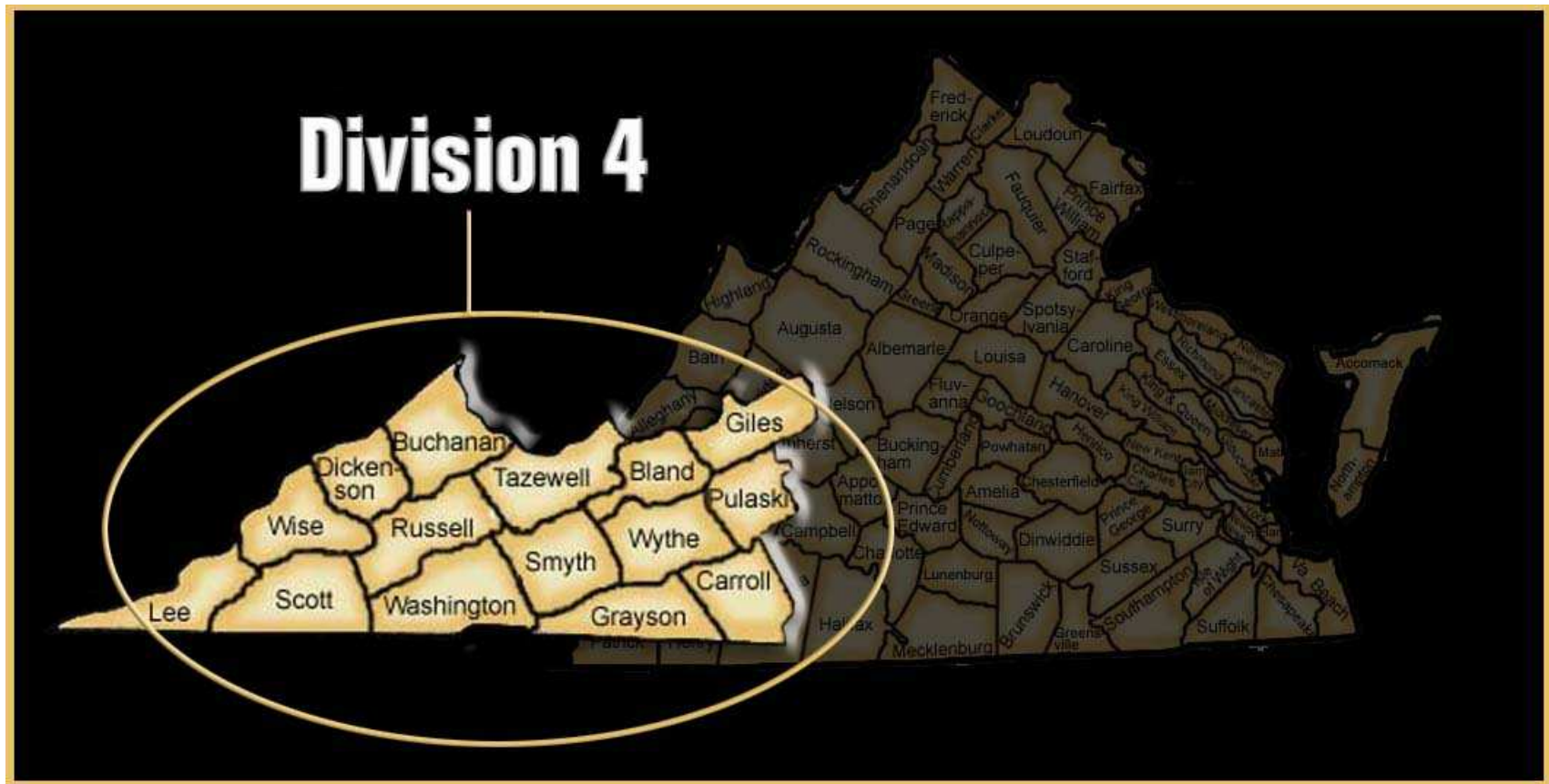


DETAIL BY AREA FOR DIVISION 3 - VIRGINIA MOTOR VEHICLE THEFT

Area	1999 Thefts	2000 Thefts	2001 Thefts	2002 Thefts	2003 Thefts	2004 Thefts	2005 Thefts	2006 Thefts	Differ- ence	% Change
Albemarle Co.	66	88	74	86	91	78	117	111	-6	-5.13%
Amherst Co. (Amherst)	31	22	43	19	33	31	25	19	-6	-24.00%
Appomattox Co.	9	8	5	2	6	2	11	2	-9	-81.82%
Augusta Co.	65	46	47	51	69	65	40	40	0	0.00%
Buckingham Co.	19	9	8	8	3	12	16	13	-3	-18.75%
Campbell Co. (Altavista; Brookneal)	69	72	81	82	40	54	73	54	-19	-26.03%
Charlotte Co.	13	4	11	8	17	3	14	19	5	35.71%
Cumberland Co.	10	12	7	10	3	5	11	11	0	0.00%
Fluvanna Co.	19	12	19	15	15	22	15	14	-1	-6.67%
Greene Co.	2	17	11	12	8	11	10	19	9	90.00%
Halifax Co. (Halifax; South Boston)	48	30	40	54	30	22	33	43	10	30.30%
Lunenburg Co. (Kenbridge; Victoria)	7	9	22	14	14	8	11	10	-1	-9.09%
Mecklenburg Co. (Chase City; Clarksville; LaCrosse; South Hill)	60	79	71	41	39	31	43	73	30	69.77%
Nelson Co.	19	20	25	17	26	18	13	22	9	69.23%
Prince Edward Co. (Farmville)	5	2	9	7	8	1	4	3	-1	-25.00%
Rockingham Co. (Bridgewater; Broadway; Dayton; Elkton; Grottoes; Timberville)	31	26	36	43	46	27	22	27	5	22.73%
Charlottesville	122	149	120	143	129	154	168	187	19	11.31%
Harrisonburg	101	74	94	73	64	78	46	72	26	56.52%
Lynchburg	125	213	220	206	168	176	175	167	-8	-4.57%
Staunton	38	38	43	51	53	26	42	37	-5	-11.90%
Waynesboro	29	14	52	36	36	43	40	42	2	5.00%
UVA PD	3	6	3	9	3	5	3	5	2	66.67%
Longwood College	0	0	2	0	0	0	0	1	1	
James Madison U PD	1	0	4	0	4	3	3	0	-3	-100.00%
TOTAL	935	950	1047	987	905	875	935	991	56	5.99%

There were 56 more Motor Vehicle Thefts in Division 3 in 2006 than in 2005, a 5.99% increase.

The largest increases in absolute numbers were in Mecklenburg County including Chase City, Clarksville, LaCross and South Hill (30 thefts; 69.77%), Harrisonburg (26 thefts; 56.52%), Charlottesville (19 thefts; 11.31%) and Halifax County including Halifax and South Boston (10 thefts; 30.30%). The largest decrease was in Campbell County including Altavista and Brookneal (19 thefts; 26.03%)



DETAIL BY AREA FOR DIVISION 4 - VIRGINIA MOTOR VEHICLE THEFT

Area	1999 Thefts	2000 Thefts	2001 Thefts	2002 Thefts	2003 Thefts	2004 Thefts	2005 Thefts	2006 Thefts	Differ- ence	% Change
Bland Co.	3	3	2	3	6	4	4	4	0	0.00%
Buchanan Co. (Grundy)	32	13	30	48	62	52	51	38	-13	-25.49%
Carroll Co. (Hillsville)	35	44	35	26	43	65	52	61	9	17.31%
Dickenson Co. (Clintwood; Haysi; Clinchco)	5	5	5	4	7	7	5	20	15	300.00%
Giles Co. (Glen Lyn; Pearisburg; Pembroke; Rich Creek; Narrows)	7	14	4	6	5	1	24	17	-7	-29.17%
Grayson Co. (Fries; Independence)	13	9	7	11	12	17	15	22	7	46.67%
Lee Co. (Jonesville; Pennington Gap)	21	19	21	27	18	27	20	11	-9	-45.00%
Pulaski Co. (Pulaski; Dublin)	46	24	36	34	37	24	36	55	19	52.78%
Russell Co. (Lebanon; Honaker)	18	20	22	34	32	40	48	42	-6	-12.50%
Scott Co. (Gate City; Weber City)	18	12	28	29	29	39	46	47	1	2.17%
Smyth Co. (Marion; Saltville; Chilhowie)	28	28	41	23	38	39	36	41	5	13.89%
Tazewell Co. (Bluefield; Pocahontas; Richlands; Tazewell; Cedar Bluff)	61	66	59	64	62	64	63	77	14	22.22%
Washington Co. (Abingdon; Damascus; Glade Spring)	81	50	49	52	92	80	70	82	12	17.14%
Wise Co. (Appalachia; Big Stone Gap; Coeburn; Pound; St. Paul; Wise)	62	31	67	53	57	63	60	56	-4	-6.67%
Wythe Co. (Wytheville; Rural Retreat)	30	41	28	19	60	34	38	47	9	23.68%
Bristol	24	27	38	33	21	32	41	45	4	9.76%
Galax	20	13	17	13	12	17	14	11	-3	-21.43%
Norton	12	10	5	15	9	8	9	8	-1	-11.11%
Univ of VA at Wise							2	0	-2	-100.00%
TOTAL	521	429	494	494	602	613	634	684	50	7.89%

There were 50 more thefts in Division 4 in 2006 than in 2005 a 7.89% increase.

Pulaski County including Pulaski and Dublin (19 thefts; 52.78%), Dickenson County including Clintwood, Haysi and Clinchco (15 thefts; 300%), Tazewell County including Bluefield, Pocahontas, Richlands, Tazewell and Cedar Bluff (14 thefts; 22.22%) and Washington County including Abingdon, Damascus and Glade Spring (12 thefts; 17.14%) had the largest increases in absolute numbers of thefts.

Buchanan County including Grundy saw the largest decrease (13 thefts; 25.49%).

DETAIL BY AREA FOR DIVISION 5 - VIRGINIA MOTOR VEHICLE THEFT

Area	1999 Thefts	2000 Thefts	2001 Thefts	2002 Thefts	2003 Thefts	2004 Thefts	2005 Thefts	2006 Thefts	Differ- ence	% Change
Accomack Co. (Chincoteague; Onancock; Parksley; Onley)	83	84	70	54	58	49	60	68	8	13.33%
Brunswick Co. (Lawrenceville)	7	13	10	8	14	30	22	18	-4	-18.18%
Gloucester Co.	57	38	20	7	24	16	22	26	4	18.18%
Greensville Co.	9	11	10	6	17	18	13	18	5	38.46%
Isle of Wight Co. (Smithfield)	61	42	61	58	41	37	68	52	-16	-23.53%
James City Co.	64	50	60	78	79	54	54	58	4	7.41%
Mathews Co.	5	5	6	3	9	6	6	8	2	33.33%
Middlesex Co.	12	6	7	4	4	7	11	11	0	0.00%
Northampton Co. (Cape Charles; Exmore)	21	14	19	18	8	16	6	8	2	33.33%
Prince George Co.	41	24	36	40	19	36	33	37	4	12.12%
Southampton Co. (Courtland; Boykins)	23	33	26	33	23	24	26	22	-4	-15.38%
Surry Co.	2	2	5	1	1	3	1	2	1	100.00%
Sussex Co. (Waverly)	18	12	18	17	11	14	28	27	-1	-3.57%
York Co.	85	75	45	44	44	40	53	33	-20	-37.74%
Chesapeake	580	207	0	630	535	633	536	464	-72	-13.43%
Emporia	34	38	42	30	16	13	16	18	2	12.50%
Franklin	22	15	30	26	26	26	20	19	-1	-5.00%
Hampton	464	630	1,108	880	566	567	578	524	-54	-9.34%
Newport News	1,193	1,256	1,227	1,299	984	962	869	780	-89	-10.24%
Norfolk	782	1,742	1,522	1,630	1,440	1,218	1,143	1,024	-119	-10.41%
Poquoson	5	5	7	6	6	10	9	4	-5	-55.56%
Portsmouth	610	770	680	649	504	588	418	355	-63	-15.07%
Suffolk	188	286	152	182	156	143	121	148	27	22.31%
Virginia Beach	719	870	955	864	814	773	772	601	-171	-22.15%
Williamsburg	30	16	24	18	13	22	24	14	-10	-41.67%
Christopher Newport University PD	0	0	0	2	0	0	0	3	3	
Hampton University PD	1	2	2	4	0	3	3	1	-2	-66.67%
Norfolk State University PD	0	9	20	16	14	9	6	4	-2	-33.33%
Thomas Nelson Community College	0	0	2	0	2	0	0	0	0	
Virginia State University PD	6	2	3	2	3	1	1	7	6	600.00%
William & Mary College PD	0	1	0	4	0	0	3	0	-3	-100.00%
Old Dominion Campus PD	4	0	8	3	5	3	6	1	-5	-83.33%

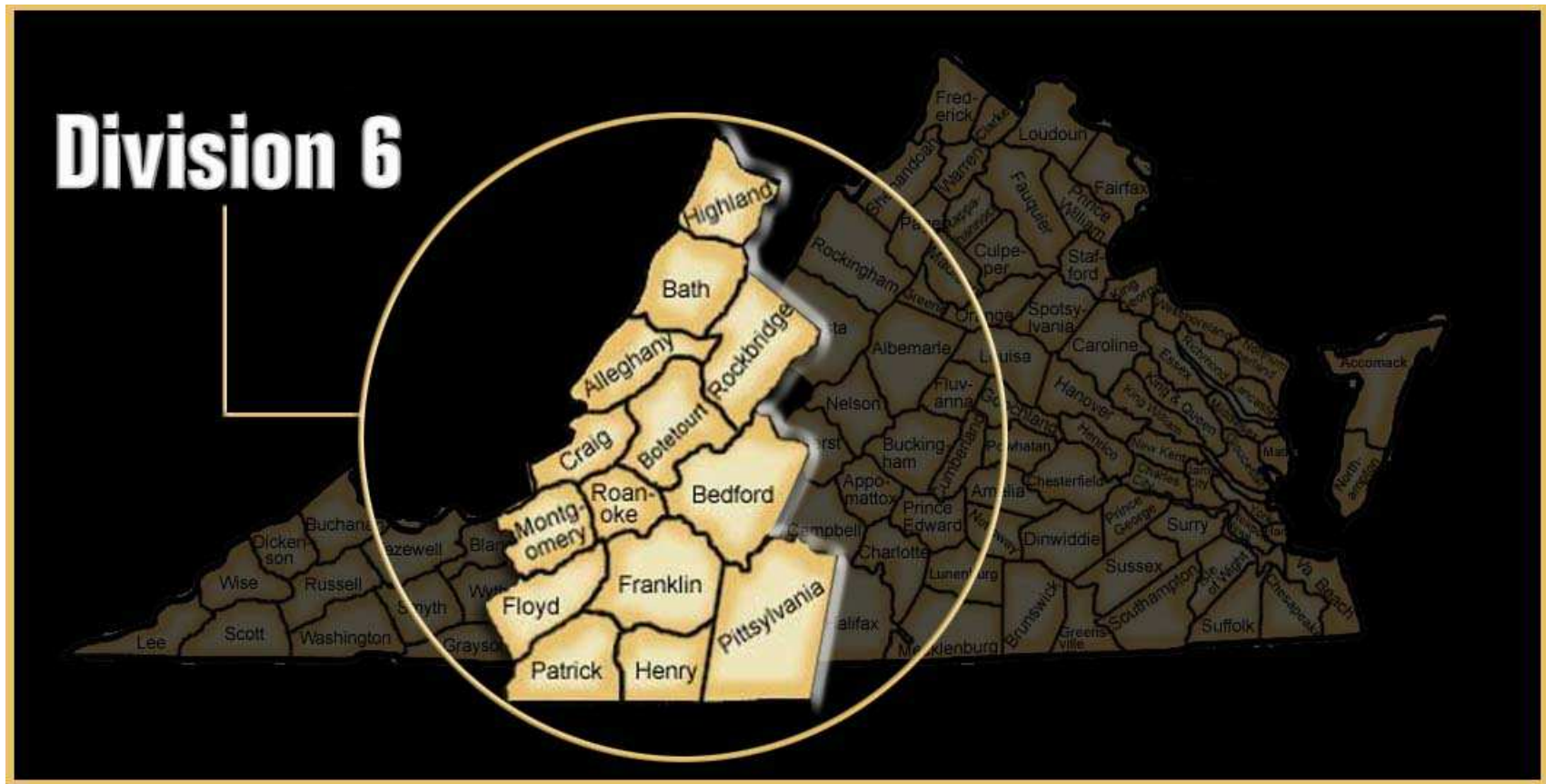
Analysis of 2006 Virginia Motor Vehicle Theft Statistics

Area	1999 Thefts	2000 Thefts	2001 Thefts	2002 Thefts	2003 Thefts	2004 Thefts	2005 Thefts	2006 Thefts	Differ- ence	% Change
Norfolk Airport Authority	4	2	4	3	2	3	0	0	0	
TOTAL	5,510	6,260	6,179	6,619	5,438	5,324	4,928	4,355	-573	-11.63%

There were 573 fewer reported Motor Vehicle Thefts in Division 5 in 2006 than in 2005, a 11.63% decrease.

The largest decreases in absolute numbers of thefts were posted by Virginia Beach (171 thefts; 22.15%), Norfolk (119 thefts; 10.41%), Newport News (89 thefts; 10.24%), Chesapeake (72 thefts; 13.43%) and Portsmouth (63 thefts; 15.07%).

The largest increase was in Suffolk (27 thefts; 22.31%).



DETAIL BY AREA FOR DIVISION 6 - VIRGINIA MOTOR VEHICLE THEFT

Area	1999 Thefts	2000 Thefts	2001 Thefts	2002 Thefts	2003 Thefts	2004 Thefts	2005 Thefts	2006 Thefts	Differ- ence	% Change
Alleghany Co. (Iron Gate)	10	9	9	16	14	9	6	8	2	33.33%
Bath Co.	2	0	1	1	0	0	0	2	2	
Bedford Co.	27	20	35	62	45	35	36	35	-1	-2.78%
Botetourt Co.	22	29	27	27	21	19	27	22	-5	-18.52%
Craig Co.	3	2	3	1	0	2	3	2	-1	-33.33%
Floyd Co.	9	10	13	16	16	20	11	19	8	72.73%
Franklin Co. (Rocky Mount)	44	51	55	35	57	75	54	59	5	9.26%
Henry Co.	147	152	133	109	115	111	87	77	-10	-11.49%
Highland Co.	1	2	2	0	0	1	0	0	0	
Montgomery Co. (Blacksburg; Christiansburg)	90	85	96	64	93	87	95	107	12	12.63%
Patrick Co.	24	68	58	62	37	30	41	50	9	21.95%
Pittsylvania Co. (Chatham; Gretna; Hurt)	54	96	87	44	77	72	57	73	16	28.07%
Roanoke Co. (Vinton)	66	74	94	100	117	113	84	71	-13	-15.48%
Rockbridge Co. (Glasgow)	19	29	9	5	4	12	9	13	4	44.44%
Bedford	12	9	6	6	8	5	3	9	6	200.00%
Buena Vista	2	6	1	4	2	6	2	2	0	0.00%
Clifton Forge	3	2	3	5	4	5	2	0	-2	-100.00%
Covington	0	2	8	19	18	11	6	10	4	66.67%
Danville	141	33	133	103	134	119	113	112	-1	-0.88%
Lexington	5	3	4	2	3	8	6	2	-4	-66.67%
Martinsville	50	47	64	29	28	25	25	36	11	44.00%
Radford	13	0	0	0	0	0	32	28	-4	-12.50%
Roanoke	286	261	337	199	333	500	451	443	-8	-1.77%
Salem	43	35	35	39	37	43	37	32	-5	-13.51%
Ferrum College PD	0	1	1	0	1	0	0	0	0	
Radford Univ PD	0	3	2	1	3	1	0	0	0	
Virginia Tech PD	1	0	0	0	0	0	4	2	-2	-50.00%
VMI PD	1	0	0	0	0	0	0	0	0	
TOTAL	1,054	1,029	1,216	949	1,167	1,309	1,191	1,214	23	1.93%

There were 23 more Motor Vehicle Thefts in Division 6 in 2006 than in 2005, a 1.93% increase.

The largest increases in Division 6 were in Pittsylvania County including Chatham, Gretna and Hurt (16 thefts; 28.07%), Montgomery County including Blacksburg and Christiansburg (12 thefts; 12.63%) and Martinsville (11 thefts; 44.00%).

The largest decreases in Division 6 were in Roanoke County including Vinton (13 thefts; 15.48%) and Henry County (10 thefts; 11.49%).



DETAIL BY AREA FOR DIVISION 7 - VIRGINIA MOTOR VEHICLE THEFT

Area	1999 Thefts	2000 Thefts	2001 Thefts	2002 Thefts	2003 Thefts	2004 Thefts	2005 Thefts	2006 Thefts	Differ- ence	% Change
Arlington Co.	665	309	702	676	599	493	419	357	-62	-14.80%
Fairfax Co. (Herndon; Vienna)	1,230	311	527	1,353	1,502	1,415	1,137	1,482	345	30.34%
Loudoun Co. (Leesburg; Middleburg; Purcellville)	203	229	243	220	243	212	259	266	7	2.70%
Prince William Co. (Quantico; Dumfries; Occoquan; Haymarket)	565	695	778	721	828	895	677	695	18	2.66%
Alexandria	706	293	702	736	621	475	399	389	-10	-2.51%
Fairfax	62	49	40	0	7	0	0	30	30	
Falls Church	36	0	71	52	45	42	37	26	-11	-29.73%
Manassas	119	154	151	130	136	141	124	123	-1	-0.81%
Manassas Park	30	35	50	44	42	41	15	45	30	200.00%
George Mason U PD	3	7	6	13	20	6	7	2	-5	-71.43%
NOVA Comm Clg PD	0	1	1	4	7	2	1	2	1	100.00%
Metro Wash Airport Authority	37	59	107	71	61	62	111	68	-43	-38.74%
TOTAL	4,634	2,142	3,378	4,020	4,111	3,784	3,186	3,485	299	9.38%

There were 299 more reported Motor Vehicle Thefts in Division 7 in 2006 than in 2005, a 9.38% increase.

Fairfax County including Herndon and Vienna had the largest increase (345 thefts; 30.34%).

Arlington County had the largest decrease (62 thefts; 14.80%).