

**VIRGINIA STATE POLICE  
Help Eliminate Auto Theft  
(H.E.A.T.)  
Program**



**Analysis of 2008  
Virginia Motor Vehicle Theft Statistics**

Prepared by



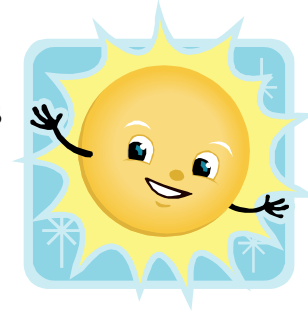
**Neathawk Dubuque & Packett**

## **TABLE OF CONTENTS**

<b>Page</b>		<b>Page</b>	
Highlights	2	Location by Type of Jurisdiction	23
Virginia Thefts	4	Location by VSP Division	25
Virginia Theft Rate	6	Division 1	28
National Theft Rate	9	Division 2	31
Crime Index Offenses	11	Division 3	33
Clearance Rate	12	Division 4	35
Seasonality	13	Division 5	37
Age of Offenders	16	Division 6	40
Value	20	Division 7	43

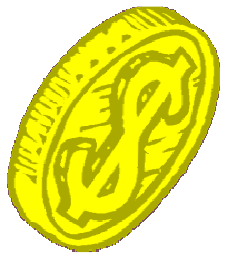
## HIGHLIGHTS

August was the leading month for auto theft in Virginia in 2008, followed by July and May. On average for the past five years, the greatest number of thefts occurred in the five-month period from June through October, with 45% of reported thefts during this time.



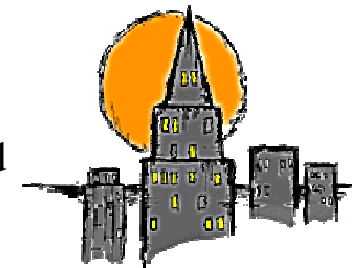
Motor Vehicle Theft in Virginia increased from 15,022 offenses in 1987 to 21,284 offenses in 1991, a 42% increase. Since H.E.A.T. began in 1992, Motor Vehicle Thefts have decreased by a little over 38% compared to the base year of 1991.

Young people continue to make up a large portion of the arrests for Motor Vehicle Theft, with 42% of those arrested in 2008 residing in the 20-years-old-or-younger age group.



The five year average (2004-2008) value of reported Motor Vehicle Thefts each year in Virginia is \$96,193,438. The five year average value per incident is \$6,428.

In 2008, three areas of the state account for 75% of the reported Motor Vehicle Thefts in Virginia: Tidewater - 30%; Northern Virginia - 23%; and Richmond - 22%.



Prior to 1999, crimes in Virginia were reported using the Summary System, which counts only the highest crime in an incident. In 1999, two methods were in place: the Summary System; and the Incident Based System (IBR), which counts all offenses in an incident, to a maximum of ten.

Beginning in 2000 and going forward, all information included in the *Crime in Virginia* reports are IBR data. Because of the change to the IBR System, it is impossible to compare some information to previous data. In some cases, 1999 data have been omitted from comparisons.

For more information and a further discussion of the two reporting systems, see the 1999 and 2000 editions of *Crime in Virginia*, which were compiled by the Uniform Crime Reporting Section of the Virginia Department of State Police.

The primary sources for information in this analysis are the 1975 through 2008 editions of *Crime in Virginia*.

**INCIDENCE - VIRGINIA MOTOR VEHICLE THEFT**

Year	1975	1976	1977	1978	1979	1980	1981	1982	1983	1984	1985	1986	1987	1988
Number Thefts	13,449	11,330	11,623	11,776	12,792	12,111	10,956	10,100	9,861	10,337	11,226	12,702	15,022	18,084
Increase/Decrease														
Year-to-Year		-15.76%	2.59%	1.32%	8.63%	-5.32%	-9.54%	-7.81%	-2.37%	4.83%	8.60%	13.15%	18.26%	20.38%

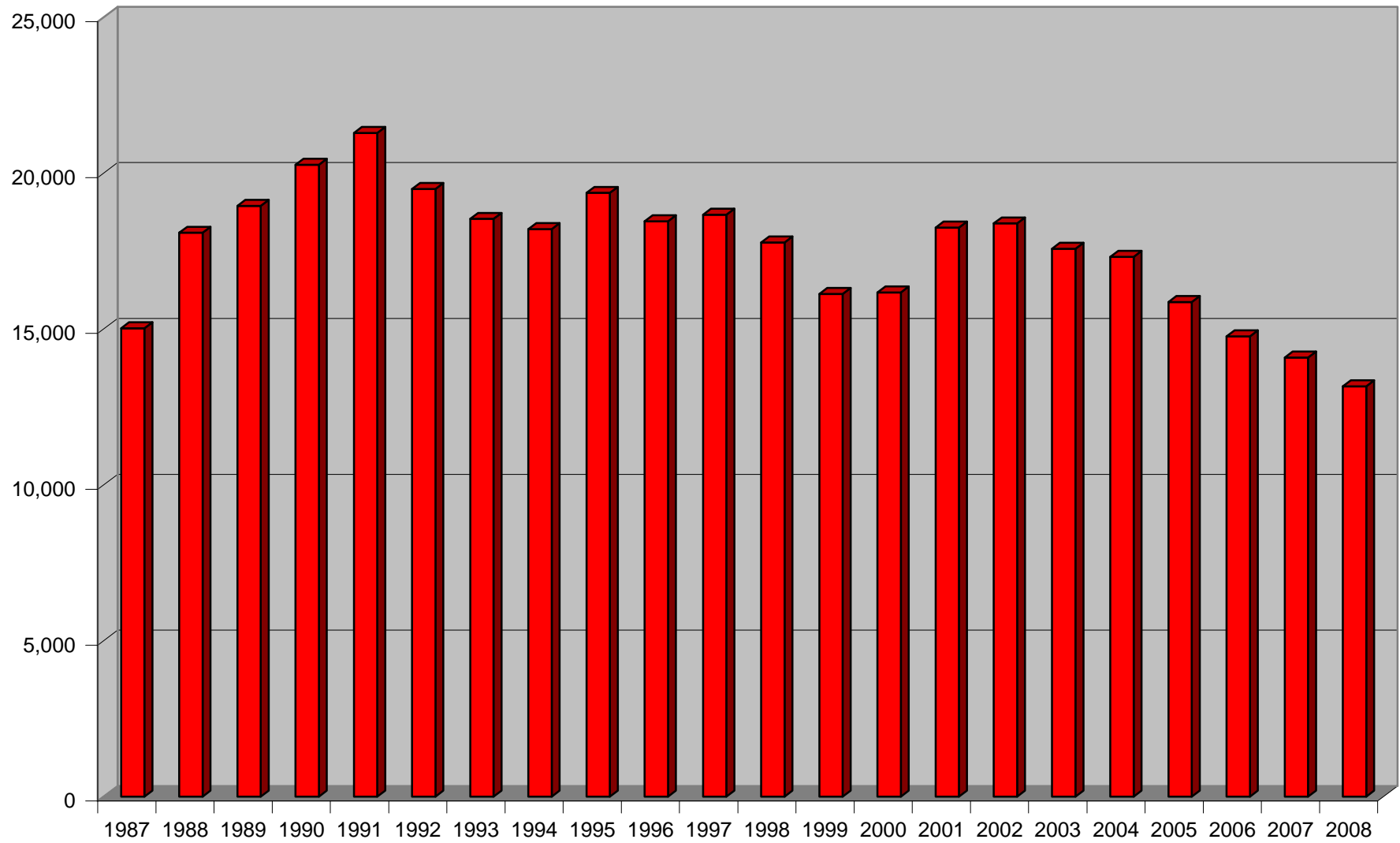
Year	1989	1990	1991	1992	1993	1994	1995	1996	1997	1998	1999	2000	2001	2002
Number Thefts	18,951	20,263	21,284	19,488	18,533	18,205	19,366	18,454	18,663	17,769	16,120	16,172	18,257	18,388
Increase/Decrease														
Year-to-Year	4.79%	6.92%	5.04%	-8.44%	-4.90%	-1.77%	6.38%	-4.71%	1.13%	-4.79%	-9.28%	0.32%	12.89%	0.72%
Since 1991				-8.44%	-12.93%	-14.47%	-9.01%	-13.30%	-12.31%	-16.51%	-24.26%	-24.02%	-14.22%	-13.61%

	2003	2004	2005	2006	2007	2008
Number Thefts	17,566	17,309	15,864	14,765	14,087	13,161
Increase/Decrease						
Year-to-Year	-4.47%	-1.46%	-8.35%	-6.93%	-4.59%	-6.57%
Since 1991	-17.47%	-18.68%	-25.47%	-30.63%	-33.81%	-38.16%

In the five years preceding the establishment of the Virginia State Police Help Eliminate Auto Theft (H.E.A.T.) Program, Motor Vehicle Theft in Virginia increased from 15,022 offenses in 1987 to 21,284 offenses in 1991, a 42% increase. Since H.E.A.T. began in 1992, Motor Vehicle Thefts have decreased 38.16% as compared to the base year of 1991. Motor Vehicle Thefts have decreased in 12 of the 17 years the H.E.A.T. Program has been in existence, and thefts have never risen above the peak year of 1991 or the previous year.

In 2008, there were 13,161 reported thefts, a decrease from the previous year of 926 thefts (6.57%).

### Virginia Motor Vehicle Thefts



**VIRGINIA VEHICLE THEFT RATE (Number of Thefts per 100,000 residents)**

Year	Population	Vehicle Theft	Vehicle Theft Rate	% Inc (Dec)	% Inc (Dec) Since 1991
1975	5,056,000	13,149	260.1	-15.81%	
1976	5,132,500	11,330	220.8	-15.12%	
1977	5,205,400	11,623	223.3	1.15%	
1978	5,284,500	11,776	222.8	-0.20%	
1979	5,324,400	12,792	240.3	7.81%	
1980	5,346,818	12,111	226.5	-5.72%	
1981	5,444,100	10,956	201.2	-11.15%	
1982	5,492,800	10,100	183.9	-8.63%	
1983	5,564,700	9,861	177.2	-3.63%	
1984	5,643,900	10,337	183.2	3.36%	
1985	5,715,100	11,226	196.4	7.25%	
1986	5,811,700	12,702	218.6	11.27%	
1987	5,932,300	15,022	253.2	15.83%	
1988	6,036,900	18,084	299.6	18.30%	
1989	6,120,200	18,951	309.6	3.37%	
1990	6,187,358	20,263	327.5	5.76%	
1991	6,288,000	21,284	338.5	3.36%	
1992	6,394,500	19,488	304.8	-9.96%	-9.96%
1993	6,473,000	18,533	286.3	-6.05%	-15.41%
1994	6,551,400	18,205	277.9	-2.95%	-17.91%
1995	6,617,400	19,366	292.7	5.32%	-13.54%
1996	6,666,200	18,454	276.8	-5.41%	-18.22%
1997	6,737,500	18,663	277.0	0.06%	-18.16%
1998	6,789,200	17,769	261.7	-5.52%	-22.68%
1999	6,872,900	16,120	234.5	-10.39%	-30.71%
2000	7,078,515	16,172	228.5	-2.59%	-32.50%

## Analysis of 2008 Virginia Motor Vehicle Theft Statistics

Year	Population	Vehicle Theft	Vehicle Theft Rate	% Inc (Dec)	% Inc (Dec) Since 1991
2001	7,187,734	18,257	254.0	11.18%	-24.96%
2002	7,293,542	18,388	252.1	-0.74%	-25.52%
2003	7,386,300	17,566	237.8	-5.67%	-29.74%
2004	7,459,827	17,309	232.0	-2.43%	-31.45%
2005	7,567,465	15,864	209.6	-9.65%	-38.07%
2006	7,642,884	14,765	193.2	-7.85%	-42.93%
2007	7,712,091	14,087	182.7	-5.45%	-46.04%
2008	7,769,089	13,161	169.4	-7.26%	-49.95%

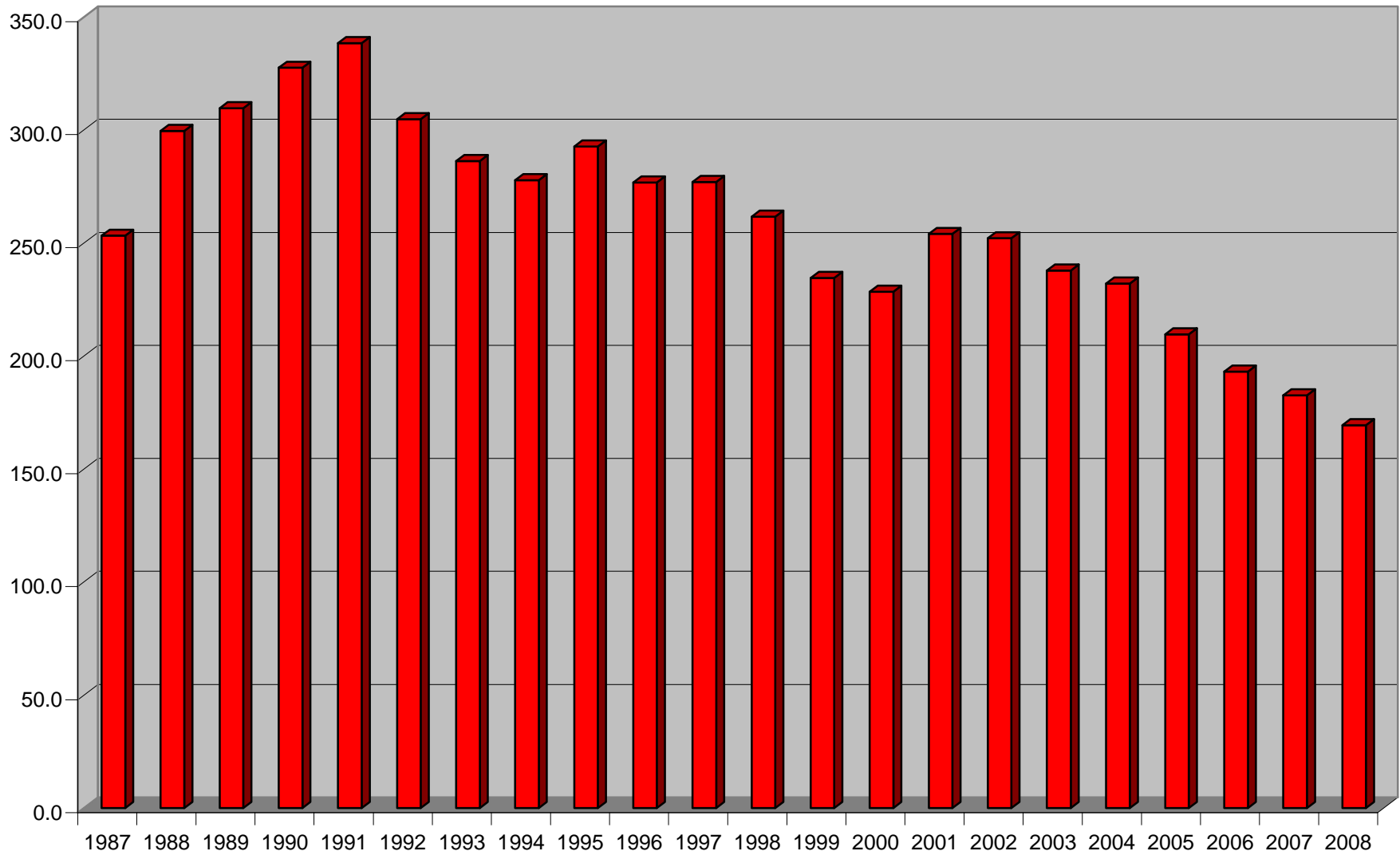
The Motor Vehicle Theft Rate (number of thefts per 100,000 residents) in Virginia increased from 253.2 in 1987 to 338.5 in 1991, a 34% increase. Since H.E.A.T. began in 1992, the Motor Vehicle Theft rate has decreased 49.95% as compared to the base year of 1991. The rate has decreased in 14 of the 17 years the H.E.A.T. Program has been in existence and has never risen above the peak year of 1991 or the two previous years.

The 2008 rate, at 169.4, is the lowest rate in the 33 years covered in this report (1975 and forward).

Source for Virginia population figures: <http://www.ers.usda.gov/stateFacts/VA.htm>.



Virginia Motor Vehicle Theft Rate



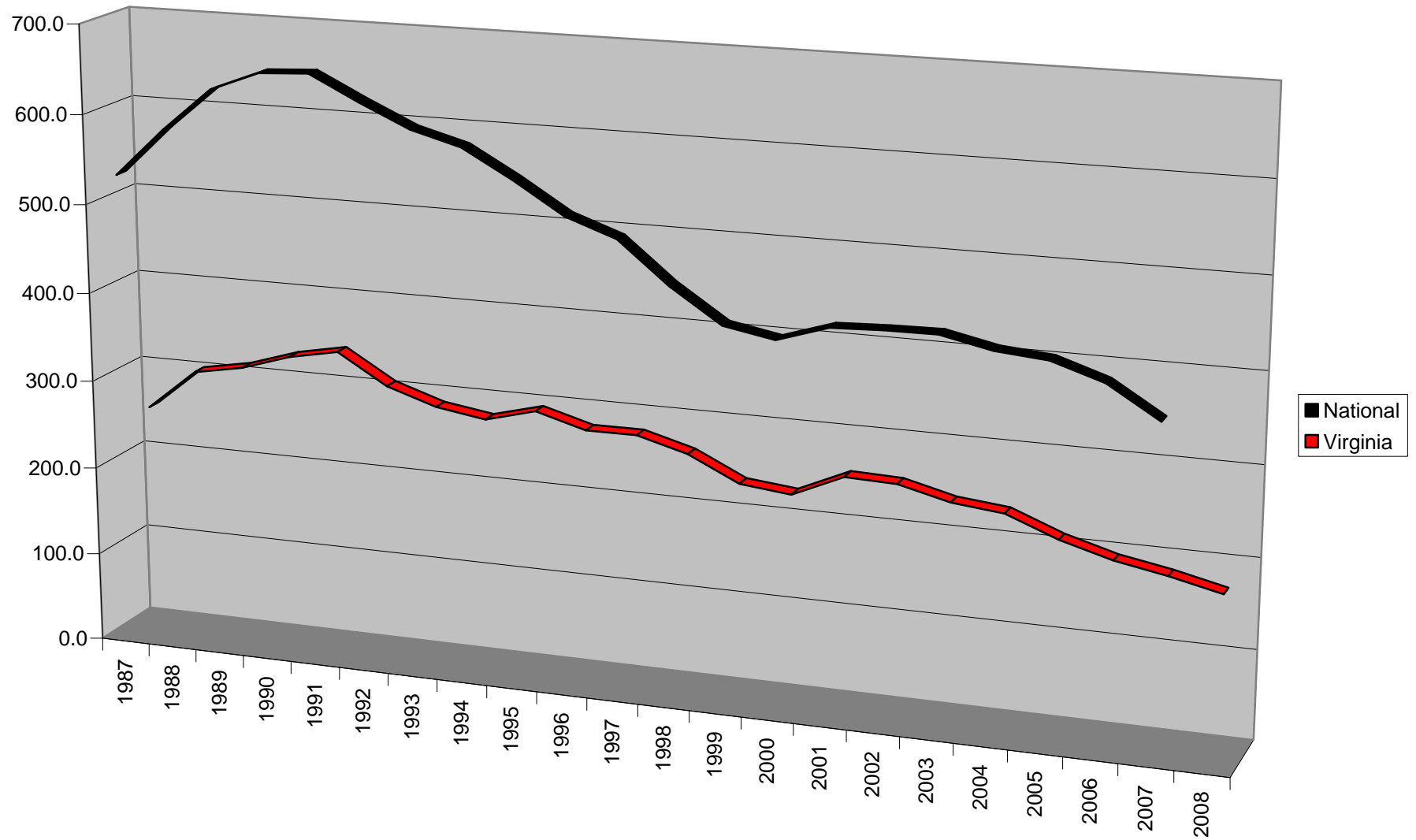
**NATIONAL VEHICLE THEFT RATE (Number of Thefts per 100,000 residents)**

Year	Population	Vehicle Thefts	Vehicle Theft Rate	% Inc (Dec)	% Inc (Dec) Since 1991
1987	242,288,918	1,288,674	531.9		
1988	244,498,982	1,432,916	586.1	10.19%	
1989	246,819,230	1,564,800	634.0	8.18%	
1990	249,464,396	1,635,907	655.8	3.44%	
1991	252,153,092	1,661,738	659.0	0.50%	
1992	255,029,699	1,610,834	631.6	-4.16%	-4.16%
1993	257,782,608	1,563,060	606.3	-4.00%	-7.99%
1994	260,327,021	1,539,287	591.3	-2.48%	-10.28%
1995	262,803,276	1,472,441	560.3	-5.24%	-14.98%
1996	265,228,572	1,394,238	525.7	-6.18%	-20.23%
1997	267,783,607	1,354,189	505.7	-3.80%	-23.26%
1998	270,248,003	1,242,781	459.9	-9.06%	-30.22%
1999	272,690,813	1,152,075	422.5	-8.13%	-35.89%
2000	281,421,906	1,160,002	412.2	-2.44%	-37.45%
2001	285,317,559	1,228,391	430.5	4.45%	-34.67%
2002	287,973,924	1,246,646	432.9	0.55%	-34.31%
2003	290,788,976	1,261,226	433.7	0.19%	-34.19%
2004	293,656,842	1,237,851	421.5	-2.81%	-36.04%
2005	296,507,061	1,235,859	416.8	-1.12%	-36.75%
2006	299,398,484	1,192,809	398.4	-4.42%	-39.55%
2007	301,621,157	1,095,769	363.3	-8.81%	-44.87%

The national Motor Vehicle Theft Rate (number of thefts per 100,000 residents) trends are similar to those in Virginia, although Virginia’s rate has always been less than the national rate and Virginia has enjoyed a larger decrease than has the United States as a whole. In 2007, the Virginia Motor Vehicle Theft rate in Virginia was 182.7, a decrease of 46.04% since 1991. This compares to a national rate of 363.3, a decrease of 44.87%. Note: 2008 national data not available at the time this report prepared.

Source: FBI Uniform Crime Reports

National & Virginia Vehicle Theft Rate



**INCIDENCE - VIRGINIA CRIME INDEX OFFENSES**

	1987	1988	1989	1990	1991	1992	1993	1994	1995	1996	1997	1998	1999
Murder	437	468	480	545	584	563	539	570	501	496	484	407	346
Forcible Rape <sup>1</sup>	1,537	1,622	1,637	1,915	1,879	2,008	2,084	1,862	1,794	1,763	1,774	1,675	1,566
Robbery	6,244	6,748	6,494	7,626	8,651	8,787	9,216	8,680	8,717	8,145	8,336	7,023	6,165
Agg. Assault	9,196	9,102	10,451	11,621	12,345	12,548	12,322	12,464	12,917	12,236	12,457	12,322	11,578
Burglary	47,642	49,069	46,149	45,236	49,224	45,217	43,338	41,863	39,427	38,868	37,875	36,478	29,780
Larceny	153,690	165,343	172,640	187,564	195,652	185,506	181,104	180,789	181,306	183,243	178,898	165,268	157,758
M.V.Theft	15,022	18,084	18,951	20,263	21,284	19,488	18,533	18,205	19,366	18,454	18,663	17,769	16,120
<b>Total</b>	<b>233,768</b>	<b>250,436</b>	<b>256,802</b>	<b>274,770</b>	<b>289,619</b>	<b>274,117</b>	<b>267,136</b>	<b>264,433</b>	<b>264,028</b>	<b>263,205</b>	<b>258,487</b>	<b>240,942</b>	<b>223,313</b>
<b>Increase/Decrease</b>													
M.V. Theft		20.38%	4.79%	6.92%	5.04%	-8.44%	-4.90%	-1.77%	6.38%	-4.71%	1.13%	-4.79%	-9.28%
Crime Index		7.13%	2.54%	7.00%	5.40%	-5.35%	-2.55%	-1.01%	-0.15%	-0.31%	-1.79%	-6.79%	-7.32%

	2000	2001	2002	2003	2004	2005	2006	2007	2008
Murder	363	355	379	408	392	432	398	411	369
Forcible Rape	4,437	5,039	5,258	5,205	5,187	1,676	5,475	5,317	5,259
Robbery	5,741	6,609	6,865	6,576	6,908	7,486	7,761	7,741	7,486
Agg. Assault	9,487	11,345	11,677	11,143	11,312	10,189	11,664	11,125	10,436
Burglary	27,154	29,978	30,671	27,997	27,883	29,145	31,529	31,531	31,749
Larceny	149,936	169,460	175,997	165,177	157,060	156,038	145,854	148,198	153,547
M.V.Theft	16,172	18,257	18,388	17,566	17,309	15,864	14,765	14,087	13,161
<b>Total</b>	<b>213,290</b>	<b>241,043</b>	<b>249,235</b>	<b>234,072</b>	<b>226,051</b>	<b>220,830</b>	<b>217,446</b>	<b>218,410</b>	<b>222,007</b>
<b>Increase/Decrease</b>									
M.V. Theft	0.32%	12.89%	0.72%	-4.47%	-1.46%	-8.35%	-6.93	-4.59%	-6.57%
Crime Index	-4.49%	13.01%	3.40%	-6.08%	-3.43%	-2.31%	-1.53	0.44%	1.65%

The Crime Index increased in 2008, with 222,007 reported offenses as compared to the 218,410 offenses in 2007. This was a 1.65% increase, as compared to a 6.57% decrease in Motor Vehicle Thefts.

<sup>1</sup>Data for 2000 forward are for Forcible Sex Offenses.

**CLEARANCE RATE - VIRGINIA MOTOR VEHICLE THEFT**

	1988	1989	1990	1991	1992	1993	1994	1995	1996	1997	1998
Motor Vehicle Theft	31.4%	32.5%	29.6%	27.9%	30.5%	28.9%	29.4%	27.3%	27.8%	24.1%	23.7%
Crime Index	26.6%	27.8%	26.4%	26.2%	27.7%	26.1%	25.6%	25.2%	25.3%	24.2%	24.6%

Clearance Rate information has not been included in *Crime in Virginia* since the 1999 edition. The 2002 edition notes: “This report no longer publishes clearance rates. The IBR system does not accurately reflect the volume of clearances each department produces in a given year. Additionally, the number of arrests in a jurisdiction does not provide offense clearance information in that one person arrested could clear a number of different offenses.”

**SEASONALITY - VIRGINIA MOTOR VEHICLE THEFT**

<b>Mon</b>	<b>1988</b>	<b>1989</b>	<b>1990</b>	<b>1991</b>	<b>1992</b>	<b>1993</b>	<b>1994</b>	<b>1995</b>	<b>1996</b>	<b>1997</b>	<b>1998</b>
<b>Aug</b>	1,898	1,887	2,084	1,952	1,940	1,975	1,793	1,887	1,839	1,796	1,672
<b>Jul</b>	1,650	1,916	1,925	2,067	1,785	1,669	1,744	1,922	1,820	1,719	1,589
<b>Jun</b>	1,445	1,583	1,586	1,792	1,414	1,556	1,591	1,682	1,554	1,577	1,537
<b>Sep</b>	1,674	1,659	1,784	1,796	1,618	1,757	1,434	1,652	1,639	1,654	1,598
<b>Oct</b>	1,716	1,705	1,885	1,890	1,599	1,648	1,437	1,641	1,670	1,721	1,612
<b>May</b>	1,344	1,507	1,464	1,609	1,652	1,459	1,542	1,507	1,409	1,460	1,459
<b>Jan</b>	1,568	1,581	1,726	1,862	1,631	1,702	1,434	1,520	1,501	1,574	1,487
<b>Nov</b>	1,483	1,570	1,724	1,803	1,723	1,548	1,471	1,409	1,480	1,615	1,408
<b>Apr</b>	1,235	1,284	1,436	1,453	1,411	1,325	1,497	1,435	1,265	1,397	1,422
<b>Mar</b>	1,209	1,418	1,496	1,704	1,490	1,245	1,508	1,649	1,491	1,404	1,367
<b>Dec</b>	1,532	1,573	1,730	1,855	1,728	1,365	1,509	1,565	1,441	1,437	1,406
<b>Feb</b>	1,330	1,268	1,423	1,501	1,497	1,284	1,245	1,497	1,345	1,309	1,212
<b>Tot</b>	18,084	18,951	20,263	21,284	19,488	18,533	18,205	19,366	18,454	18,663	17,769

<b>Mon</b>	<b>2000</b>	<b>2001</b>	<b>2002</b>	<b>2003</b>	<b>2004</b>	<b>2005</b>	<b>2006</b>	<b>2007</b>	<b>2008</b>	<b>5 Yr. Avg.</b>	<b>% of Total</b>
<b>Aug</b>	1,596	2,004	1,653	1,734	1,676	1,586	1,495	1,310	1,361	1,486	9.88%
<b>Jul</b>	1,439	1,736	1,785	1,705	1,639	1,543	1,317	1,248	1,240	1,397	9.29%
<b>Jun</b>	1,360	1,596	1,645	1,417	1,547	1,349	1,331	1,284	1,176	1,337	8.89%
<b>Sep</b>	1,326	1,611	1,543	1,500	1,386	1,569	1,338	1,135	1,144	1,314	8.74%
<b>Oct</b>	1,343	1,829	1,528	1,494	1,454	1,406	1,333	1,141	1,057	1,278	8.50%
<b>May</b>	1,436	1,465	1,621	1,438	1,510	1,265	1,178	1,237	1,193	1,277	8.49%
<b>Jan</b>	1,465	1,338	1,548	1,445	1,444	1,239	1,220	1,284	1,122	1,262	8.39%
<b>Nov</b>	1,257	1,562	1,415	1,453	1,297	1,275	1,248	1,194	953	1,193	7.94%
<b>Apr</b>	1,282	1,315	1,580	1,352	1,328	1,201	1,129	1,164	1,017	1,168	7.77%
<b>Mar</b>	1,208	1,344	1,505	1,478	1,387	1,182	1,132	1,050	997	1,150	7.65%
<b>Dec</b>	1,194	1,388	1,376	1,376	1,241	1,249	1,073	1,128	930	1,124	7.48%
<b>Feb</b>	1,266	1,069	1,189	1,174	1,400	1,000	971	912	971	1,051	6.99%
<b>Tot</b>	16,172	18,257	18,388	17,566	17,309	15,864	14,765	14,087	13,161	15,037	100.00%

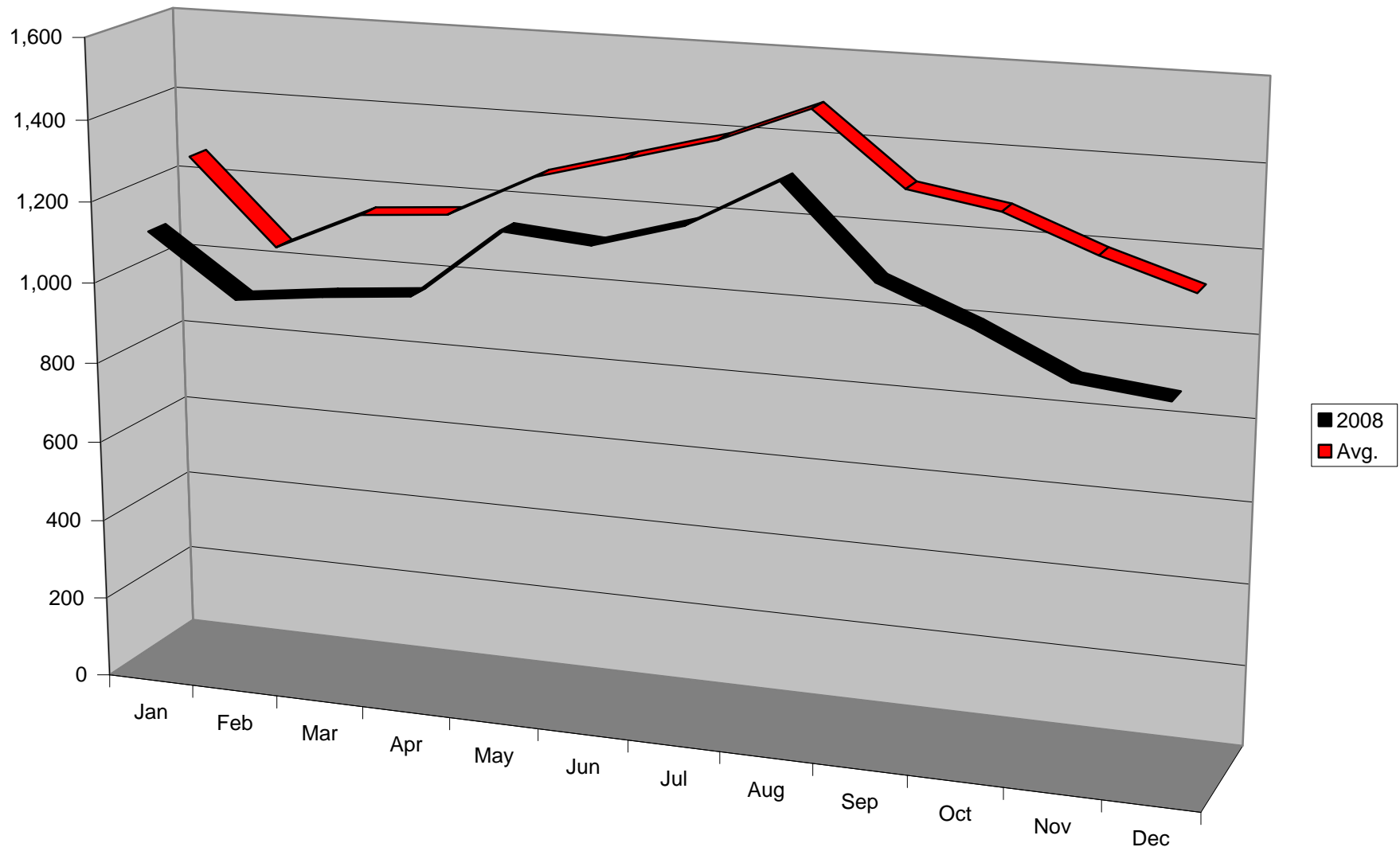
Mon	2008	% of Total	Cum. %
Aug	1,361	10.34%	10.34%
Jul	1,240	9.42%	19.76%
May	1,193	9.06%	28.83%
Jun	1,176	8.94%	37.76%
Sep	1,144	8.69%	46.45%
Jan	1,122	8.53%	54.98%
Oct	1,057	8.03%	63.01%
Apr	1,017	7.73%	70.74%
Mar	997	7.58%	78.31%
Feb	971	7.38%	85.69%
Nov	953	7.24%	92.93%
Dec	930	7.07%	100.00%
TOT	13,161	100.00%	

In 2008, August was the leading month for Motor Vehicle Theft, with 1,361 thefts (10.34% of the total). July had the second highest number of reported thefts in 2008, with 1,240 thefts (9.42% of the total). May was in third place with 1,193 reported thefts (9.06% of the total).

August and July 2008 with the highest number of thefts mirrors historical data (1991 to 2008 five-year average). In the five-year average period, however, June was in third place and September in fourth place as compared to 2008 when May was in third place and June was in fourth place.

*Note: 1999 data omitted in order to make comparisons more relevant.*

Virginia Motor Vehicle Thefts by Month





**AGE OF OFFENDERS - VIRGINIA MOTOR VEHICLE THEFT ARRESTS**

Age	1987	1988	1989	1990	1991	1992	1993	1994	1995	1996
12 & under	43	57	65	66	90	77	58	82	63	50
13 - 17	985	1,556	1,733	1,794	1,788	1,687	1,587	1,686	1,547	1,342
18 - 20	519	654	725	644	696	569	511	531	523	506
21 - 24	449	537	540	491	456	448	403	374	367	359
25 - 29	326	389	466	403	389	357	410	413	380	390
30 - 34	178	236	292	255	304	233	290	332	335	338
35 - 39	115	167	154	124	147	173	179	191	182	221
40 & over	131	161	166	125	162	147	145	183	197	208
<b>TOTAL</b>	<b>2,746</b>	<b>3,757</b>	<b>4,141</b>	<b>3,902</b>	<b>4,032</b>	<b>3,691</b>	<b>3,583</b>	<b>3,792</b>	<b>3,594</b>	<b>3,414</b>

Age	1997	1998	1999	2000	2001	2002	2003	2004	2005	2006	2007	2008	Avg.	% of Total
12 & under	41	28	35	13	17	12	10	11	7	10	6	5	38	1.5%
13 - 17	1,407	1,117	673	485	495	485	383	405	346	251	238	217	1,009	39.1%
18 - 20	427	445	305	321	316	309	269	273	242	198	191	221	427	16.5%
21 - 24	248	318	153	193	168	169	193	184	187	164	149	142	304	11.8%
25 - 29	286	284	180	148	144	148	126	136	154	139	103	124	268	10.4%
30 - 34	297	321	170	186	161	136	136	126	125	105	84	83	215	8.3%
35 - 39	212	262	142	146	126	136	114	136	129	114	108	84	153	5.9%
40 & over	192	238	133	139	151	163	168	174	199	198	165	157	168	6.5%
<b>TOTAL</b>	<b>3,110</b>	<b>3,013</b>	<b>1,791</b>	<b>1,631</b>	<b>1,578</b>	<b>1,558</b>	<b>1,399</b>	<b>1,445</b>	<b>1,389</b>	<b>1,179</b>	<b>1,044</b>	<b>1,033</b>	<b>2,583</b>	<b>100.0%</b>

## Analysis of 2008 Virginia Motor Vehicle Theft Statistics

Age	1987	1988	1989	1990	1991	1992	1993	1994	1995	1996
<b>20 &amp; under</b>	1,547	2,267	2,523	2,504	2,574	2,333	2,156	2,299	2,133	1,898
<b>% of Total</b>	56.3%	60.3%	60.9%	64.2%	63.8%	63.2%	60.2%	60.6%	59.4%	55.6%
<b>21 &amp; over</b>	1,199	1,490	1,618	1,398	1,458	1,358	1,427	1,493	1,460	1,516
<b>% of Total</b>	43.7%	39.7%	39.1%	35.8%	36.2%	36.8%	39.8%	39.4%	40.6%	44.4%
<b>Total</b>	2,746	3,757	4,141	3,902	4,032	3,691	3,583	3,792	3,593	3,414

Age	1997	1998	1999	2000	2001	2002	2003	2004	2005	2006	2007	2008	Total	% of Total
<b>20 &amp; under</b>	1,875	1,590	1,013	819	828	806	662	689	595	459	435	435	32,440	57.1%
<b>% of Total</b>	60.3%	52.8%	56.6%	50.2%	52.5%	51.7%	47.7%	47.7%	42.8%	38.9%	41.7%	42.1%	57.1%	
<b>21 &amp; over</b>	1,235	1,423	778	812	750	752	727	756	794	720	609	598	24,371	42.9%
<b>% of Total</b>	39.7%	47.2%	43.4%	49.8%	47.5%	48.3%	52.3%	52.3%	57.2%	61.1%	58.3%	57.9%	42.9%	
<b>Total</b>	3,110	3,013	1,791	1,631	1,578	1,558	1,389	1,445	1,389	1,179	1,044	1,033	56,811	100.0%

Age	1987	1988	1989	1990	1991	1992	1993	1994	1995	1996
<b>20 &amp; under</b>	1,547	2,267	2,523	2,504	2,574	2,333	2,156	2,299	2,133	1,898
<b>% Inc(Dec)</b>		46.54%	11.29%	-0.75%	2.80%	-9.3%	-7.59%	6.63%	-7.22%	-11.0%
<b>21 &amp; over</b>	1,199	1,490	1,618	1,398	1,458	1,358	1,427	1,493	1,460	1,516
<b>% Inc(Dec)</b>		24.27%	8.59%	-13.60%	4.29%	-6.86%	5.08%	4.63%	-2.21%	3.8%
<b>Total</b>	2,746	3,757	4,141	3,902	4,032	3,691	3,583	3,792	3,593	3,414
<b>% Inc(Dec)</b>		36.82%	10.22%	-5.77%	3.33%	-8.46%	-2.93%	5.83%	-5.25%	-4.98%

Age	1997	1998	1999	2000	2001	2002	2003	2004	2005	2006	2007	2008	Total	% of Total
<b>20 &amp; under</b>	1,875	1,590	1,013	819	828	806	662	689	595	459	435	435	32,440	57.1%
<b>% Inc(Dec)</b>		-1.2%	-15.2%	-36.3%	-19.2%	1.1%	-2.7%	-17.9%	4.1%	-13.6%	-22.9%	-5.2%	0.0%	
<b>21 &amp; over</b>	1,235	1,423	778	812	750	752	727	756	794	720	609	598	24,371	42.9%
<b>% Inc(Dec)</b>		-18.5%	15.2%	-45.3%	4.4%	-7.6%	0.3%	-3.3%	4.0%	5.0%	-9.3%	-15.4%	-1.8%	
<b>Total</b>	3,110	3,013	1,791	1,631	1,578	1,558	1,389	1,445	1,389	1,179	1,044	1,033	56,811	100.0%
<b>% Inc(Dec)</b>		-8.90%	-3.12%	-40.56%	-8.93%	-3.25%	-1.27%	-10.85%	4.0%	-3.9%	-15.1%	-11.5%	-1.1%	

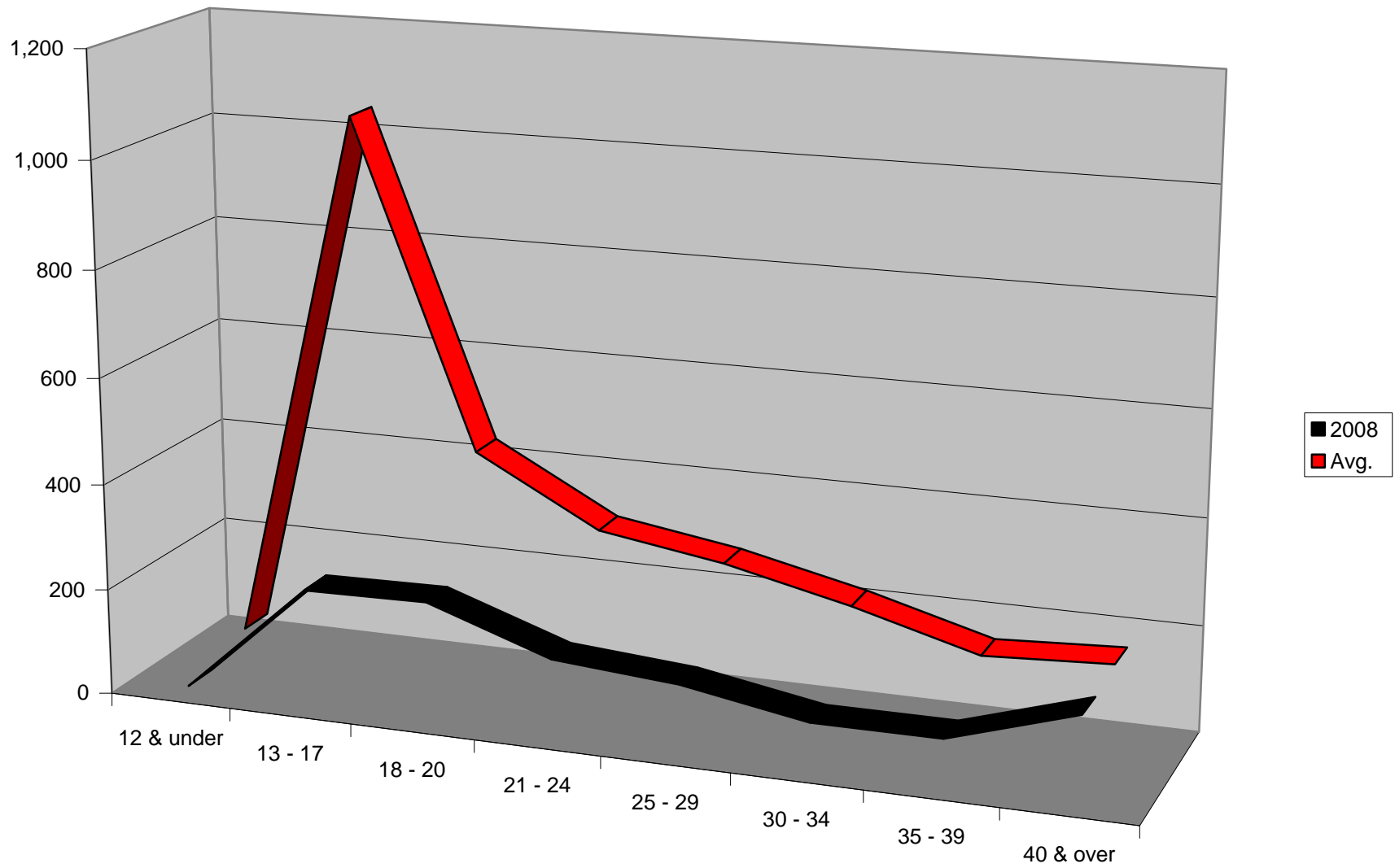
On average (1987-2008), 57.1% of the people arrested for Motor Vehicle Theft in Virginia were 20 years old or younger. (Information for 2008 is reported separately on the next page.)

**AGE OF OFFENDERS - VIRGINIA MOTOR VEHICLE THEFT ARRESTS, Continued**

<b>Age</b>	<b>2008</b>	<b>% of Total</b>	<b>Cum.</b>
<b>12 &amp; under</b>	5	0.5%	0.5%
<b>13 - 17</b>	217	21.0%	21.5%
<b>18 - 20</b>	221	21.4%	42.9%
<b>21 - 24</b>	142	13.7%	56.6%
<b>25 - 29</b>	124	12.0%	68.6%
<b>30 - 34</b>	83	8.0%	76.7%
<b>35 - 39</b>	84	8.1%	84.8%
<b>40 &amp; over</b>	157	15.2%	100.0%
<b>TOTAL</b>	1,033	100.0%	

More than 40% (42.9%) of the people arrested for Motor Vehicle Theft in Virginia in 2008 were 20 years old or younger. This is a decrease in the arrest pattern during the 1987 through 2008 period when an average of 57.1% of the arrests were of people 20 years old or younger (see previous page). In fact, arrests of people 20 years old or younger have been less than 53% in ten of the last eleven years (1998, 2000, 2001, 2002, 2003, 2004, 2005, 2006, 2007 and 2008).

Virginia Arrests for Motor Vehicle Theft by Age



**VALUE OF PROPERTY STOLEN - VIRGINIA MOTOR VEHICLE THEFT**

1987	1988	1989	1990	1991	1992	1993	1994	1995	1996	1997	1998
\$77,788,249	\$102,675,739	\$111,911,694	\$115,273,346	\$113,933,893	\$106,006,275	\$99,250,780	\$102,689,284	\$127,668,582	\$126,860,726	\$127,775,309	\$123,859,005
	31.99%	9.00%	3.00%	-1.16%	-6.96%	-6.37%	3.46%	24.33%	-0.63%	0.72%	-3.06%

2000	2001	2002	2003	2004	2005	2006	2007	2008
\$105,422,963	\$109,309,561	\$111,721,528	\$106,689,725	\$105,735,129	\$93,565,797	\$95,337,370	\$96,290,505	\$90,038,389
-14.88%	3.69%	2.21%	-4.50%	-0.89%	-11.51%	1.89%	1.00%	-6.49%
<b>Five Year Average</b>								\$96,193,438

The “Value of Property Stolen – Virginia Motor Vehicle Theft” in 2008 was \$90,038,389, a decrease of 6.49% as compared to 2007.

*Note: 1999 data omitted in order to make comparisons more relevant.*

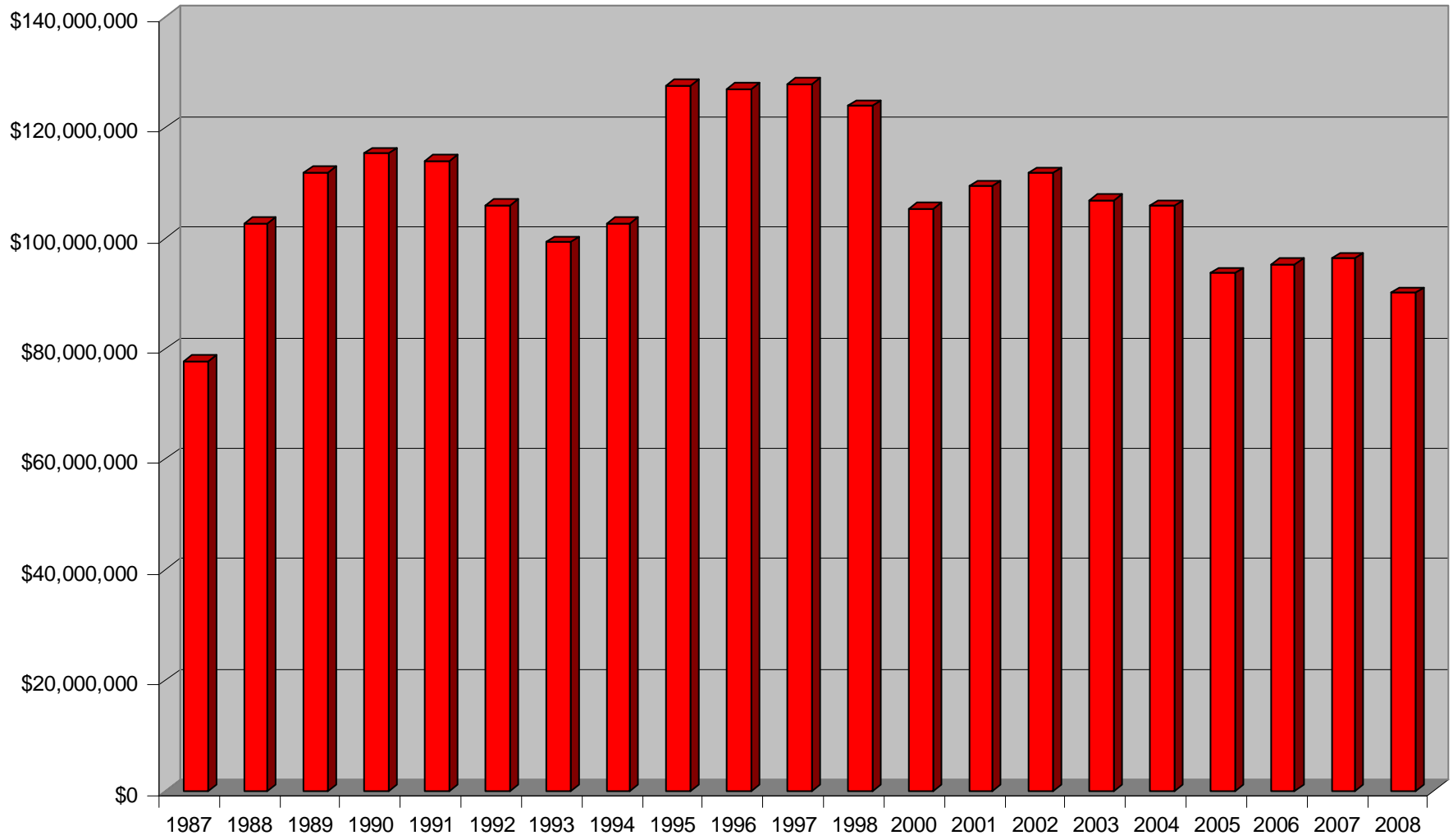
**AVERAGE VALUE PER INCIDENT - VIRGINIA MOTOR VEHICLE THEFT**

1987	1988	1989	1990	1991	1992	1993	1994	1995	1996
\$5,178	\$5,678	\$5,905	\$5,689	\$5,353	\$5,440	\$5,355	\$5,641	\$6,592	\$6,874
	9.64%	4.01%	-3.67%	-5.90%	1.62%	-1.55%	5.33%	16.87%	4.28%

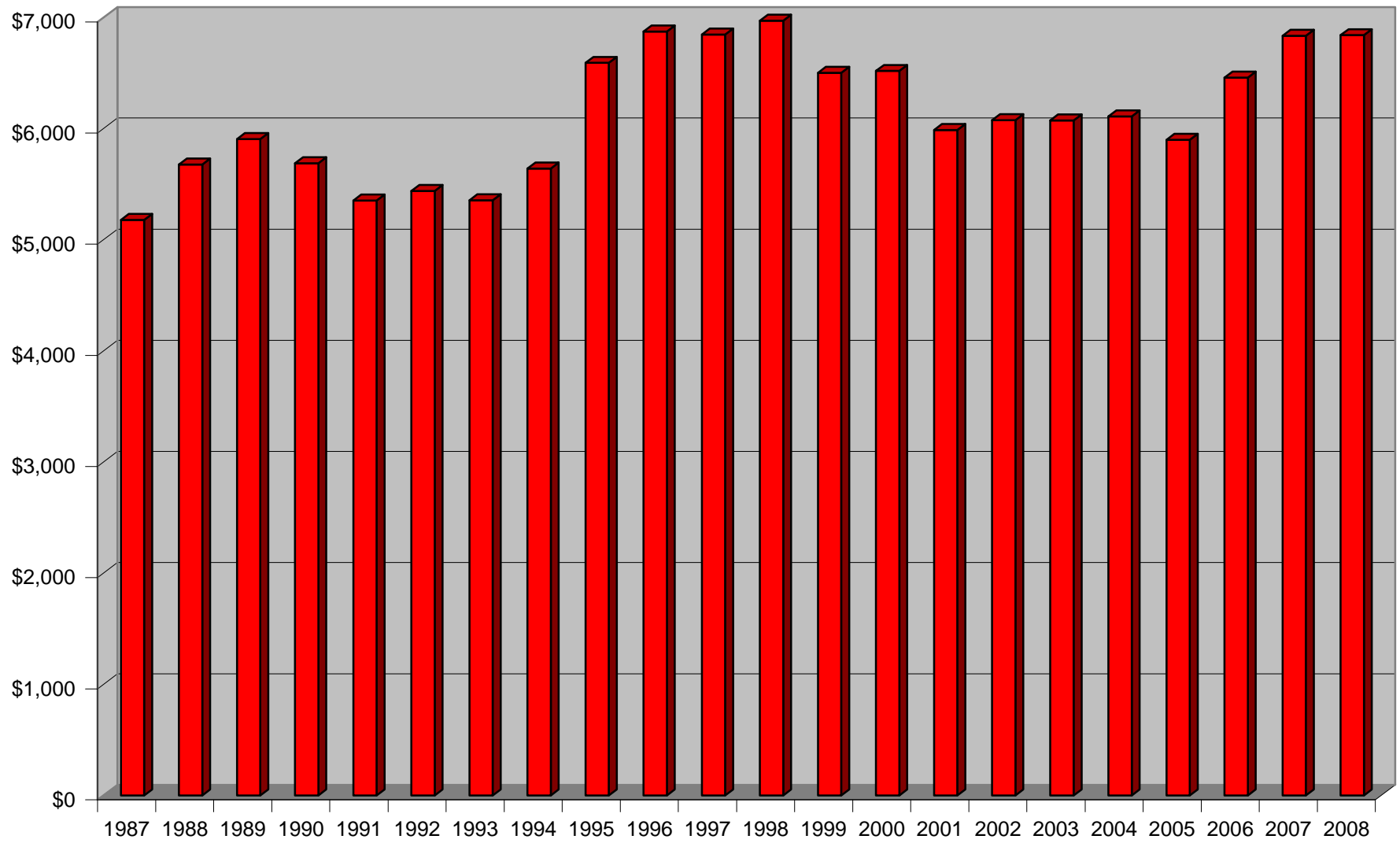
1997	1998	1999	2000	2001	2002	2003	2004	2005	2006	2007	2008
\$6,846	\$6,971	\$6,501	\$6,519	\$5,987	\$6,076	\$6,074	\$6,109	\$5,898	\$6,457	\$6,835	\$6,841
-0.41%	1.81%	-6.74%	0.28%	-8.15%	1.48%	-0.04%	0.58%	-3.45%	9.48%	5.86%	0.09%
<b>Five Year Average</b>											\$6,428

The average value per incident in 2008 increased slightly from \$6,835 in 2007 to \$6,841 in 2008, a 0.09% increase.

Value of Property Stolen - Virginia Motor Vehicle Theft



Virginia Motor Vehicle Theft - Average Value per Incident



**LOCATION (BY TYPE OF JURISDICTION) - VIRGINIA MOTOR VEHICLE THEFT**

Location	1987	1988	1989	1990	1991	1992	1993	1994	1995	1996	1997	1998
County	6,917	7,808	7,675	7,123	7,503	6,986	6,760	7,084	7,580	7,965	7,784	7,348
City	8,042	10,215	11,226	12,909	13,625	12,356	11,577	10,937	11,626	10,423	10,693	10,259
College	60	48	35	77	71	56	49	54	62	29	56	37
Other	3	13	15	154	85	90	147	130	98	37	130	125
<b>Totals</b>	<b>15,022</b>	<b>18,084</b>	<b>18,951</b>	<b>20,263</b>	<b>21,284</b>	<b>19,488</b>	<b>18,533</b>	<b>18,205</b>	<b>19,366</b>	<b>18,454</b>	<b>18,663</b>	<b>17,769</b>

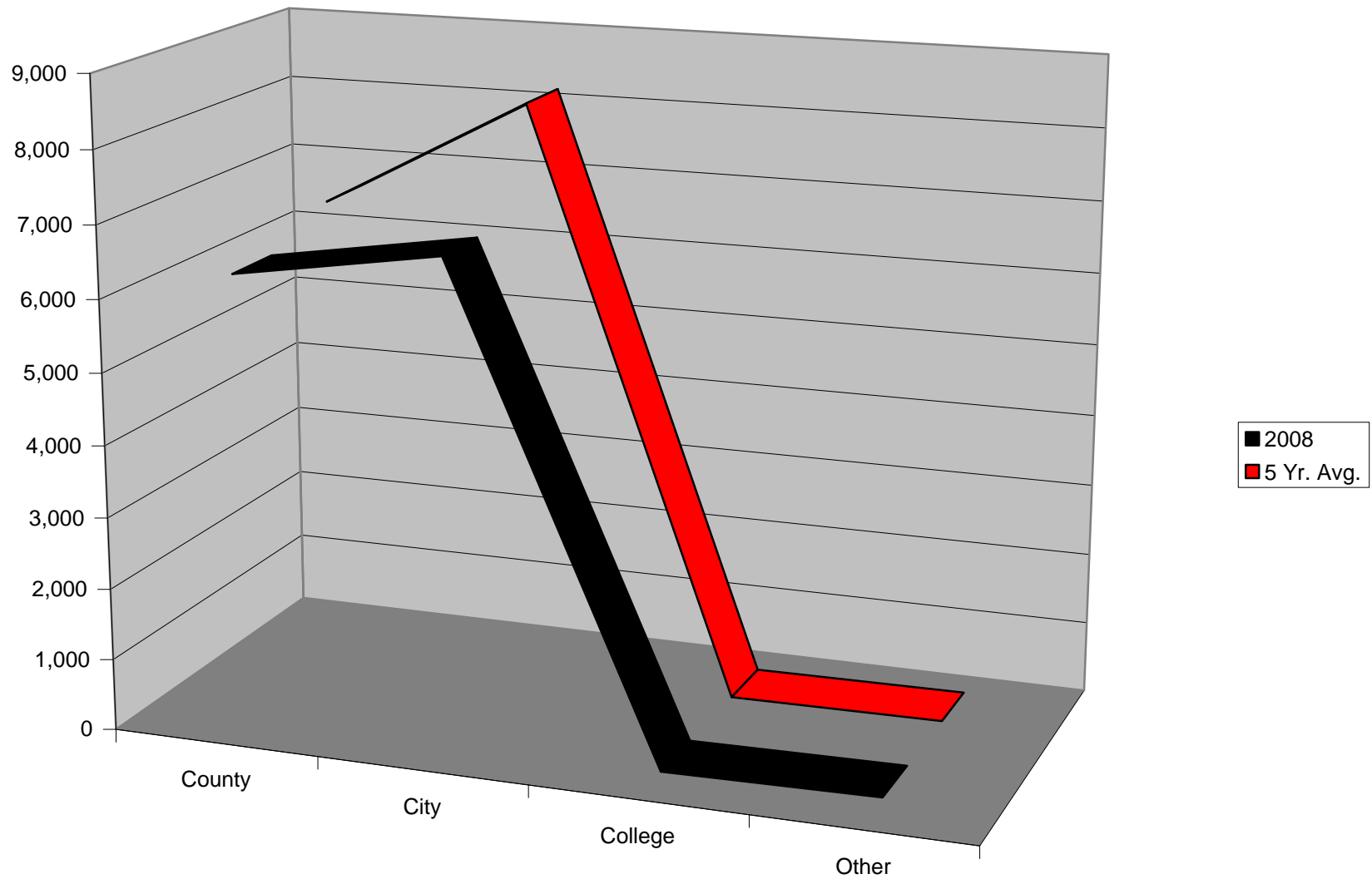
Location	1999	2000	2001	2002	2003	2004	2005	2006	2007	2008	5 yr. Avg.	% of Total
County	7,025	5,485	6,404	6,983	7,262	7,778	5,939	6,844	6,466	6,266	6,659	44.28%
City	9,110	10,569	11,657	11,259	10,149	9,403	9,741	7,810	7,448	6,738	8,228	54.72%
College	30	46	64	66	77	110	59	38	38	57	60	0.40%
Other	58	72	132	80	78	18	125	73	135	100	90	0.60%
<b>Total</b>	<b>16,223</b>	<b>16,172</b>	<b>18,257</b>	<b>18,388</b>	<b>17,566</b>	<b>17,309</b>	<b>15,864</b>	<b>14,765</b>	<b>14,087</b>	<b>13,161</b>	<b>15,037</b>	<b>100.00%</b>

Over 50% of reported Motor Vehicle Thefts in Virginia occur in cities (54.72% for the 2004-2008 five-year average; 51.20% for 2008). Another 40% (44.28% for the 2004-2008 average; 47.61% for 2008) occur in counties (includes towns). The remaining thefts occur in colleges and other locations such as airports. The difference between numbers of thefts in cities and counties (including towns) has been narrowing. In 2001, there were 5,253 more thefts in cities than in counties, a 45% difference. By 2008, the gap was only 472 thefts or 7.00%.

*Note: 1999 thefts by location data were slightly different than total reported thefts (16,120 total vs. 16,223 total when counted by area).*



Virginia Motor Vehicle Thefts by Location



**LOCATION (BY VSP DIVISION) - VIRGINIA MOTOR VEHICLE THEFT**

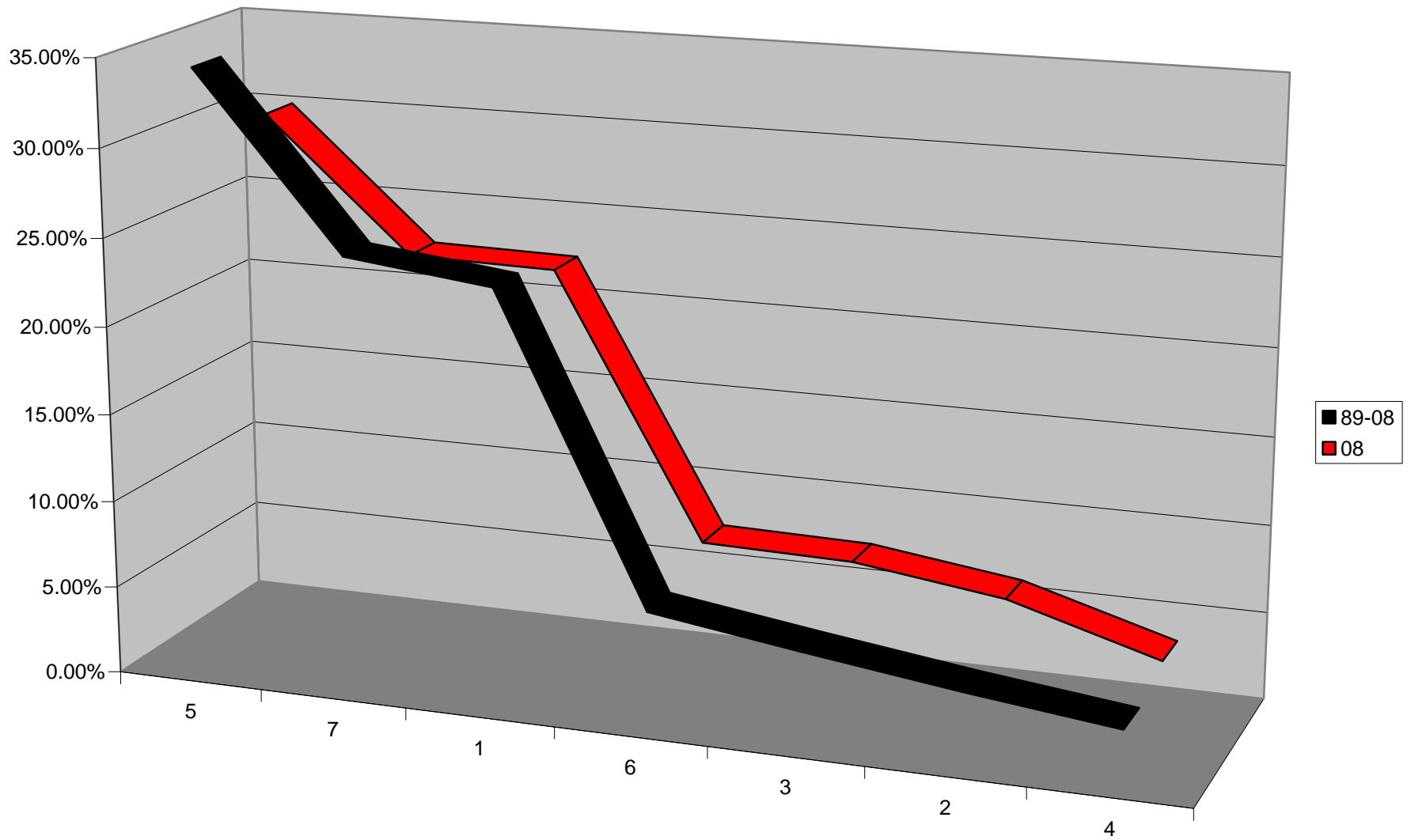
Division	89-08 Thefts	% of Total	Cumulative
5	120,627	34.30%	34.30%
7	85,971	24.45%	58.75%
1	82,474	23.45%	82.20%
6	21,823	6.21%	88.40%
3	17,504	4.98%	93.38%
2	13,443	3.82%	97.20%
4	9,838	2.80%	100.00%
<b>Total</b>	<b>351,680</b>		

Division	2008 Thefts	% of Total	Cumulative
5	3,964	30.12%	30.12%
7	2,975	22.60%	52.72%
1	2,957	22.47%	75.19%
6	993	7.55%	82.74%
3	971	7.38%	90.11%
2	816	6.20%	96.31%
4	485	3.69%	100.00%
<b>Total</b>	<b>13,161</b>		

On average (1989-2008), three areas of the state account for 82% (82.20%) of the reported Motor Vehicle Thefts in Virginia: Tidewater - 34% [34.30%] (Virginia State Police Division 5); Northern Virginia – 24.5% [24.45%] (Virginia State Police Division 7); and Richmond – 23.5% [23.45%] (Virginia State Police Division 1).

In 2008, Tidewater, Northern Virginia and Richmond thefts dropped to 75% (75.19%) of the total.

Thefts by Division (as a % of total thefts)



**CHANGE BY DIVISION FROM '07 TO '08 - VIRGINIA MOTOR VEHICLE THEFT**

<b>Div.</b>	<b>2007 Thefts</b>	<b>2008 Thefts</b>	<b>Difference</b>	<b>% Change</b>	<b>% of Total Increase/Decrease</b>
<b>1</b>	3,234	2975	-259	-8.01%	-27.97%
<b>2</b>	758	816	58	7.65%	6.26%
<b>3</b>	985	971	-14	-1.42%	-1.51%
<b>4</b>	532	485	-47	-8.83%	-5.08%
<b>5</b>	4,273	3964	-309	-7.23%	-33.37%
<b>6</b>	1,098	993	-105	-9.56%	-11.34%
<b>7</b>	3,207	2957	-250	-7.80%	-27.00%
<b>Total</b>	14,087	13,161	-926	-6.57%	

All but one of the seven Virginia State Police Divisions posted decreases in Motor Vehicle Theft in 2008. Division 5 (Tidewater) led the pack with 309 fewer reported thefts in 2008 than in 2007, a 7.23% decrease. Percentage wise, Division 6 (Roanoke and surrounding areas) racked up an impressive 9.56% decrease in thefts representing 105 fewer reported thefts in 2008 than in 2007. Division 2 (Northern tip of the state) posted the only increase: 58 more reported thefts, a 7.65% increase.

*Note: Additional analysis for each of the seven divisions follows.*



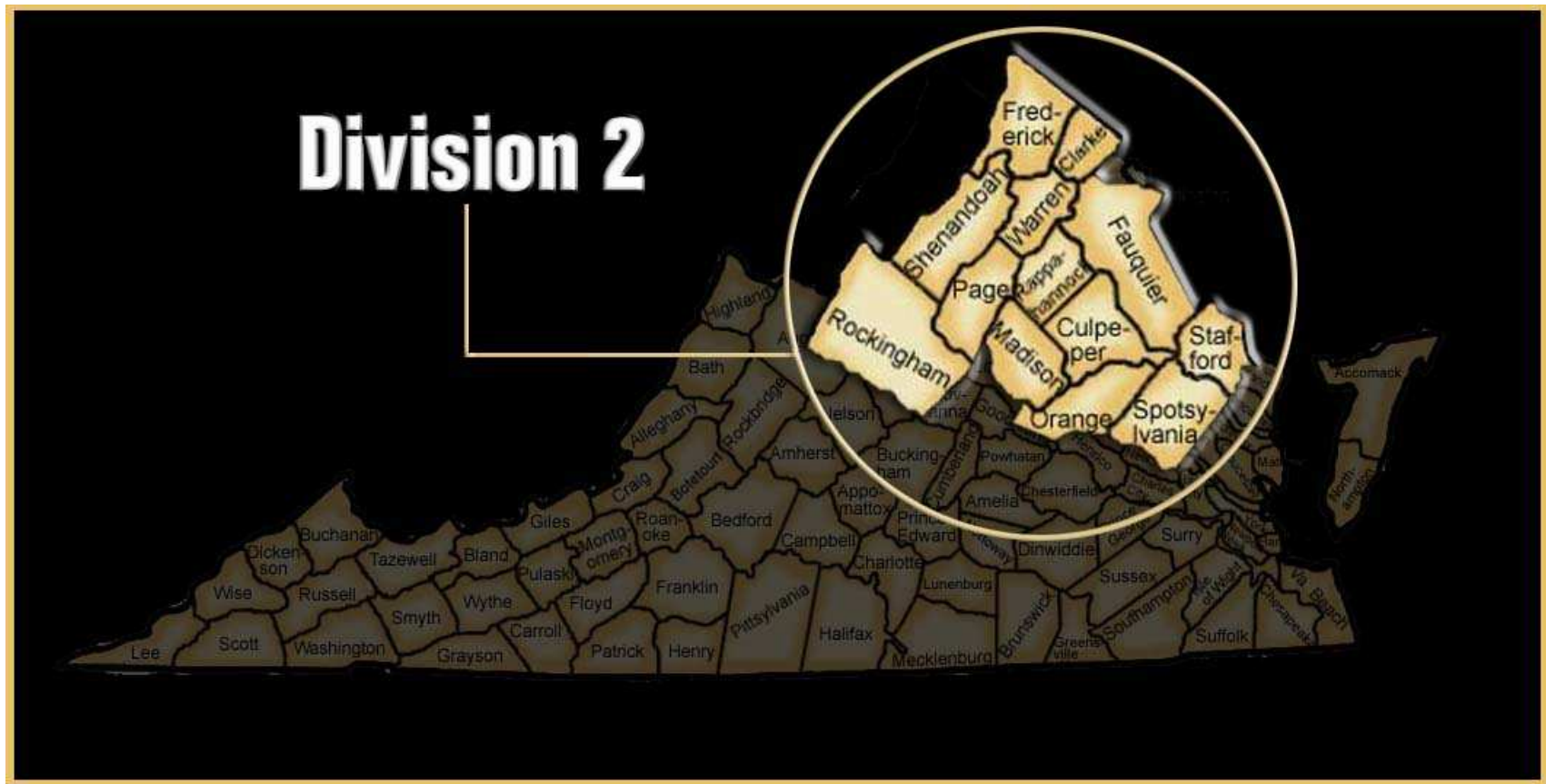
**DETAIL BY AREA FOR DIVISION 1 - VIRGINIA MOTOR VEHICLE THEFT**

Area	1999 Thefts	2000 Thefts	2001 Thefts	2002 Thefts	2003 Thefts	2004 Thefts	2005 Thefts	2006 Thefts	2007 Thefts	2008 Thefts	Difference	% Change
Amelia Co.	5	3	11	8	7	14	10	8	18	23	5	27.78%
Caroline Co. (Bowling Green)	40	28	25	14	24	33	12	15	20	28	8	40.00%
Charles City Co.	2	1	3	6	3	2	0	5	3	6	3	100.00%
Chesterfield Co.	730	465	467	475	477	515	570	466	519	492	-27	-5.20%
Dinwiddie Co. (McKinney)	40	44	31	32	21	58	31	47	52	45	-7	-13.46%
Essex Co. (Tappahannock)	19	22	18	17	9	9	18	20	9	17	8	88.89%
Goochland Co.	16	9	15	12	15	24	17	11	19	19	0	0.00%
Hanover Co. (Ashland)	50	54	53	75	76	85	60	57	60	69	9	15.00%
Henrico Co.	789	783	879	826	784	839	726	616	571	588	17	2.98%
King & Queen Co.	3	0	0	0	1	0	2	2	6	1	-5	-83.33%
King George Co.	20	19	24	35	23	28	18	26	26	22	-4	-15.38%
King William Co.	15	12	6	1	2	9	5	6	3	5	2	66.67%
Lancaster Co. (Kilmarnock)	6	4	11	7	9	4	5	1	7	7	0	0.00%
Louisa Co. (Louisa)	21	19	16	21	9	26	17	25	30	19	-11	-36.67%
New Kent Co. (West Point)	12	13	13	28	13	14	22	21	27	25	-2	-7.41%
Northumberland Co.	5	6	5	16	13	12	6	6	6	7	1	16.67%
Nottoway Co. (Blackstone; Crewe; Burkeville)	13	16	20	5	14	27	23	22	28	13	-15	-53.57%
Powhatan Co.	5	16	17	18	22	25	24	16	15	26	11	73.33%
Richmond Co. (Warsaw)	6	5	7	8	13	7	6	16	5	4	-1	-20.00%
Westmoreland Co. (Colonial Beach)	17	26	20	28	30	19	24	18	17	13	-4	-23.53%
Colonial Heights	41	39	39	45	26	37	45	32	48	35	-13	-27.08%
Hopewell	16	105	140	100	77	127	148	125	112	104	-8	-7.14%
Petersburg	275	299	324	284	221	394	296	218	303	330	27	8.91%
Richmond	2,101	2,695	3,091	2,548	2,728	2,417	2,249	1,476	1,311	1,027	-284	-21.66%
J. Sarg. Reynolds										1	1	
VCU PD	5	11	6	6	11	13	17	10	6	17	11	183.33%
U of R PD	4	1	3	2	4	2	3	0	2	2	0	0.00%
Capitol PD	6	0	2	2	2	4	0	1	0	0	0	
RIC Airport PD	10	9	14	4	12	11	13	4	10	11	1	10.00%
SS VA Training Center	0	2	4	0	1	0	1	0	0	0	0	
VA Dept Alc. Bev. Control / Conv. Rec./DMV	1	0	1	0	0	0	0	0	1	1	1	
<b>TOTAL</b>	<b>4,273</b>	<b>4,706</b>	<b>5,265</b>	<b>4,623</b>	<b>4,647</b>	<b>4,755</b>	<b>4,368</b>	<b>3,270</b>	<b>3,234</b>	<b>2,957</b>	<b>-276</b>	<b>-8.54%</b>

There were 276 fewer Motor Vehicle Thefts in Division 1 in 2008 than in 2007, an 8.54% decrease.

The Richmond metropolitan area was a mixed bag in motor vehicle theft increases and decreases in 2008. The City of Richmond had the largest decrease in absolute numbers: 284 thefts (21.66%). Chesterfield County had the second largest decrease: 27 thefts (5.20%). Henrico County, on the other hand, had an increase: 17 thefts (2.98%). The reduction in the City of Richmond was enough to take it out of its usual first place spot for the highest number of thefts in the state. Fairfax County, with 1,117 thefts (not including Herndon and Vienna) moved into first place with the highest number of thefts, while Norfolk, with 1,076 thefts, came in second. Richmond rounded out the top three spots with 1,027 thefts.

The Tri-Cities area also had mixed results in 2008. Petersburg posted an increase of 27 thefts (8.91%). Colonial Heights, on the other hand, had 13 fewer thefts in 2008 than in 2007, a 27.08% decrease. Hopewell also had a decrease: 8 thefts (7.14%).





**DETAIL BY AREA FOR DIVISION 2 - VIRGINIA MOTOR VEHICLE THEFT**

Area	1999 Thefts	2000 Thefts	2001 Thefts	2002 Thefts	2003 Thefts	2004 Thefts	2005 Thefts	2006 Thefts	2007 Thefts	2008 Thefts	Difference	% Change
Clarke Co. (Berryville)	16	12	17	15	22	18	12	12	23	16	-7	-30.43%
Culpeper Co. (Culpeper)	26	0	19	32	30	33	28	33	43	56	13	30.23%
Fauquier Co. (Warrenton)	55	35	47	53	60	41	41	50	67	67	0	0.00%
Frederick Co. (Middletown; Stephens City)	96	93	105	92	95	105	110	143	135	139	4	2.96%
Madison Co.	9	8	12	3	1	2	7	11	22	12	-10	-45.45%
Orange Co. (Orange; Gordonsville)	20	8	21	31	28	27	16	21	21	24	3	14.29%
Page Co. (Luray; Shenandoah; Stanley)	20	8	20	23	5	6	23	25	15	25	10	66.67%
Rappahannock Co.	4	5	6	0	0	7	5	4	4	4	0	0.00%
Shenandoah Co. (Edinburg; Mt. Jackson; Woodstock; Strasburg; New Market)	27	33	24	37	26	25	27	26	27	33	6	22.22%
Spotsylvania Co.	114	95	96	82	94	84	90	67	75	132	57	76.00%
Stafford Co.	148	160	117	142	152	109	69	160	130	129	-1	-0.77%
Warren Co. (Front Royal)	74	68	71	56	56	57	65	62	49	60	11	22.45%
Fredericksburg	31	75	65	86	77	76	64	77	73	64	-9	-12.33%
Winchester	40	54	57	44	50	59	65	75	74	55	-19	-25.68%
Univ of Mary Wash PD	1	2	1	0	0	0	0	0	0	0	0	
<b>TOTAL</b>	<b>744</b>	<b>656</b>	<b>678</b>	<b>696</b>	<b>696</b>	<b>649</b>	<b>622</b>	<b>766</b>	<b>758</b>	<b>816</b>	<b>58</b>	<b>7.65%</b>

Division 2 had 58 more auto thefts in 2008 than in 2007, a 7.65% increase. This was the only Virginia State Police Division to post an increase in thefts.

The largest increase was in Spotsylvania County with 57 more thefts than the previous year, a 76% increase.

The largest decrease was in Winchester with 19 fewer thefts in 2008 than in 2007, a 25.68% decrease.

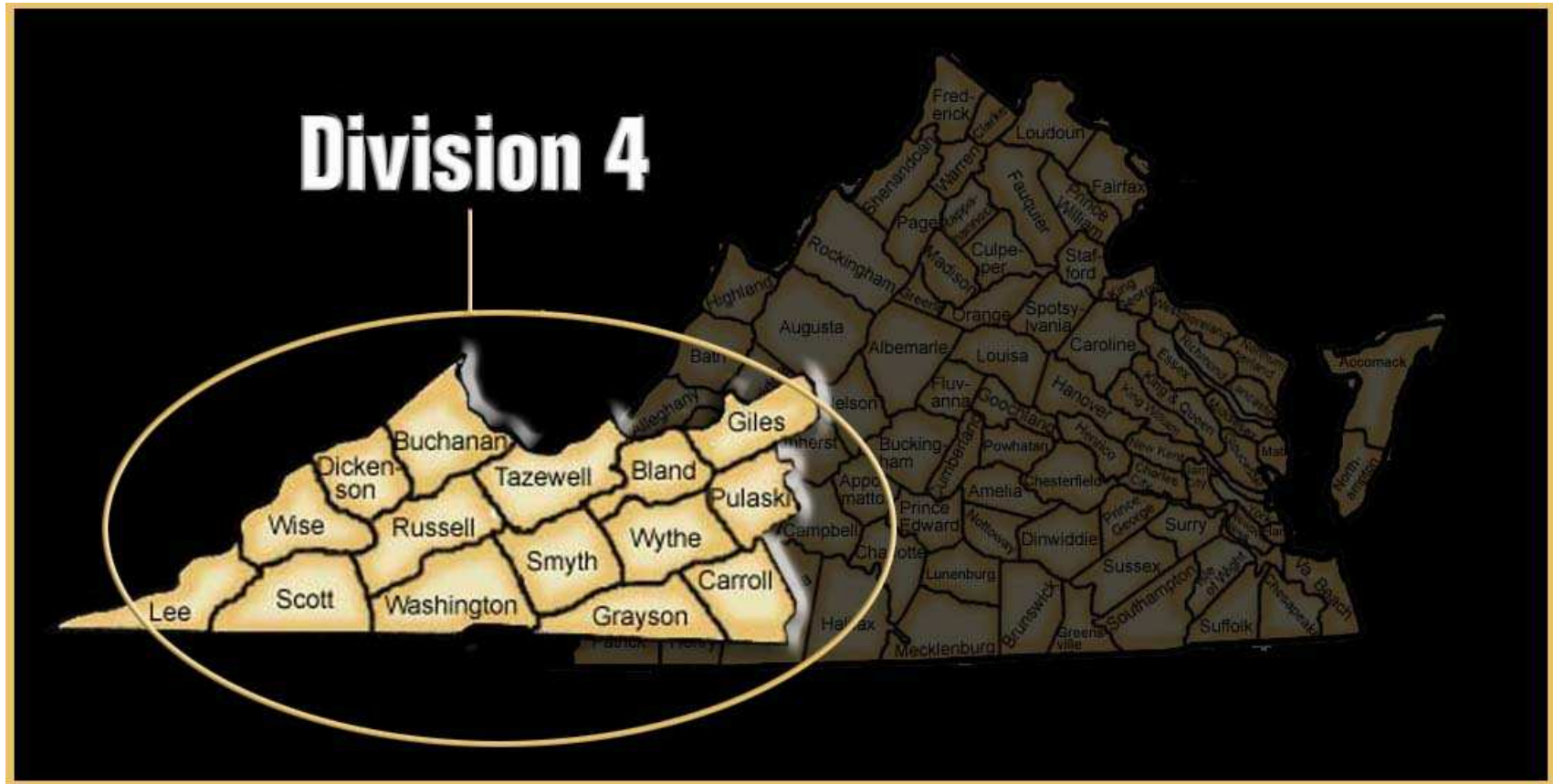


**DETAIL BY AREA FOR DIVISION 3 - VIRGINIA MOTOR VEHICLE THEFT**

Area	1999 Thefts	2000 Thefts	2001 Thefts	2002 Thefts	2003 Thefts	2004 Thefts	2005 Thefts	2006 Thefts	2007 Thefts	2008 Thefts	Difference	% Change
Albemarle Co.	66	88	74	86	91	78	117	111	93	100	7	7.53%
Amherst Co. (Amherst)	31	22	43	19	33	31	25	19	29	28	-1	-3.45%
Appomattox Co.	9	8	5	2	6	2	11	2	17	10	-7	-41.18%
Augusta Co.	65	46	47	51	69	65	40	40	63	42	-21	-33.33%
Buckingham Co.	19	9	8	8	3	12	16	13	19	25	6	31.58%
Campbell Co. (Altavista; Brookneal)	69	72	81	82	40	54	73	54	61	68	7	11.48%
Charlotte Co.	13	4	11	8	17	3	14	19	18	12	-6	-33.33%
Cumberland Co.	10	12	7	10	3	5	11	11	12	7	-5	-41.67%
Fluvanna Co.	19	12	19	15	15	22	15	14	17	21	4	23.53%
Greene Co.	2	17	11	12	8	11	10	19	12	13	1	8.33%
Halifax Co. (Halifax; South Boston)	48	30	40	54	30	22	33	43	42	53	11	26.19%
Lunenburg Co. (Kenbridge; Victoria)	7	9	22	14	14	8	11	10	18	24	6	33.33%
Mecklenburg Co. (Chase City; Clarksville; LaCrosse; South Hill)	60	79	71	41	39	31	43	73	61	42	-19	-31.15%
Nelson Co.	19	20	25	17	26	18	13	22	29	21	-8	-27.59%
Prince Edward Co. (Farmville)	5	2	9	7	8	1	4	3	8	10	2	25.00%
Rockingham Co. (Bridgewater; Broadway; Dayton; Elkton; Grottoes; Timberville)	31	26	36	43	46	27	22	27	22	41	19	86.36%
Charlottesville	122	149	120	143	129	154	168	187	141	150	9	6.38%
Harrisonburg	101	74	94	73	64	78	46	72	75	80	5	6.67%
Lynchburg	125	213	220	206	168	176	175	167	172	155	-17	-9.88%
Staunton	38	38	43	51	53	26	42	37	32	25	-7	-21.88%
Waynesboro	29	14	52	36	36	43	40	42	39	37	-2	-5.13%
UVA PD	3	6	3	9	3	5	3	5	4	5	1	25.00%
Longwood College	0	0	2	0	0	0	0	1		0	0	
James Madison U PD	1	0	4	0	4	3	3	0	1	2	1	100.00%
TOTAL	935	950	1047	987	905	875	935	991	985	971	-14	-1.42%

There were 14 fewer Motor Vehicle Thefts in Division 3 in 2008 than in 2007, a 1.42% decrease.

The largest decrease was in Augusta County (21 thefts, 33.33%), followed by Mecklenburg County, including Chase City, Clarksville, LaCrosse and South Hill (19 thefts, 31.15%) and Lynchburg (17 thefts, 9.88%). The largest increase was in Rockingham County, including Bridgewater, Broadway, Dayton, Elkton, Grottoes and Timberville (19 thefts, 86.36%), followed by Halifax County, including Halifax and South Boston (11 thefts; 26.19%).



**DETAIL BY AREA FOR DIVISION 4 - VIRGINIA MOTOR VEHICLE THEFT**

Area	1999 Thefts	2000 Thefts	2001 Thefts	2002 Thefts	2003 Thefts	2004 Thefts	2005 Thefts	2006 Thefts	2007 Thefts	2008 Thefts	Difference	% Change
Bland Co.	3	3	2	3	6	4	4	4	3	4	1	33.33%
Buchanan Co. (Grundy)	32	13	30	48	62	52	51	38	44	42	-2	-4.55%
Carroll Co. (Hillsville)	35	44	35	26	43	65	52	61	42	39	-3	-7.14%
Dickenson Co. (Clintwood; Haysi; Clinchco)	5	5	5	4	7	7	5	20	15	11	-4	-26.67%
Giles Co. (Glen Lyn; Pearisburg; Pembroke; Rich Creek; Narrows)	7	14	4	6	5	1	24	17	19	22	3	15.79%
Grayson Co. (Fries; Independence)	13	9	7	11	12	17	15	22	18	18	0	0.00%
Lee Co. (Jonesville; Pennington Gap)	21	19	21	27	18	27	20	11	9	14	5	55.56%
Pulaski Co. (Pulaski; Dublin)	46	24	36	34	37	24	36	55	42	46	4	9.52%
Russell Co. (Lebanon; Honaker)	18	20	22	34	32	40	48	42	36	28	-8	-22.22%
Scott Co. (Gate City; Weber City)	18	12	28	29	29	39	46	47	31	34	3	9.68%
Smyth Co. (Marion; Saltville; Chilhowie)	28	28	41	23	38	39	36	41	34	25	-9	-26.47%
Tazewell Co. (Bluefield; Pocahontas; Richlands; Tazewell; Cedar Bluff)	61	66	59	64	62	64	63	77	38	46	8	21.05%
Washington Co. (Abingdon; Damascus; Glade Spring)	81	50	49	52	92	80	70	82	73	53	-20	-27.40%
Wise Co. (Appalachia; Big Stone Gap; Coeburn; Pound; St. Paul; Wise)	62	31	67	53	57	63	60	56	58	32	-26	-44.83%
Wythe Co. (Wytheville; Rural Retreat)	30	41	28	19	60	34	38	47	16	15	-1	-6.25%
Bristol	24	27	38	33	21	32	41	45	37	38	1	2.70%
Galax	20	13	17	13	12	17	14	11	15	15	0	0.00%
Norton	12	10	5	15	9	8	9	8	2	3	1	50.00%
Univ of VA at Wise							2	0	0	0	0	
<b>TOTAL</b>	521	429	494	494	602	613	634	684	532	485	-47	-8.83%

There were 47 fewer thefts in Division 4 in 2008 than in 2007, an 8.83% decrease.

Wise County, including Appalachia, Big Stone Gap, Coeburn, Pound, St. Paul and Wise, had the largest decrease (26 thefts, 44.83%), followed by Washington County, including Abingdon, Damascus and Glade Spring (20 thefts, 27.40%).

Tazewell County, including Bluefield, Pocahontas, Richlands, Tazewell and Cedar Bluff, had the largest increase in absolute numbers (8 thefts, 21.05%), while Lee County, including Jonesville and Pennington Gap, had the largest increase percentage wise (5 thefts, 55.56%).



**DETAIL BY AREA FOR DIVISION 5 - VIRGINIA MOTOR VEHICLE THEFT**

Area	1999 Thefts	2000 Thefts	2001 Thefts	2002 Thefts	2003 Thefts	2004 Thefts	2005 Thefts	2006 Thefts	2007 Thefts	2008 Thefts	Differ- ence	% Change
Accomack Co. (Chincoteague; Onancock; Parksley; Onley)	83	84	70	54	58	49	60	68	71	51	-20	-28.17%
Brunswick Co. (Lawrenceville)	7	13	10	8	14	30	22	18	20	22	2	10.00%
Gloucester Co.	57	38	20	7	24	16	22	26	25	23	-2	-8.00%
Greensville Co.	9	11	10	6	17	18	13	18	16	10	-6	-37.50%
Isle of Wight Co. (Smithfield)	61	42	61	58	41	37	68	52	79	50	-29	-36.71%
James City Co.	64	50	60	78	79	54	54	58	49	36	-13	-26.53%
Mathews Co.	5	5	6	3	9	6	6	8	8	4	-4	-50.00%
Middlesex Co.	12	6	7	4	4	7	11	11	9	3	-6	-66.67%
Northampton Co. (Cape Charles; Exmore)	21	14	19	18	8	16	6	8	23	21	-2	-8.70%
Prince George Co.	41	24	36	40	19	36	33	37	47	27	-20	-42.55%
Southampton Co. (Courtland; Boykins)	23	33	26	33	23	24	26	22	10	31	21	210.00%
Surry Co.	2	2	5	1	1	3	1	2	4	5	1	25.00%
Sussex Co. (Waverly)	18	12	18	17	11	14	28	27	12	21	9	75.00%
York Co.	85	75	45	44	44	40	53	33	44	38	-6	-13.64%
Chesapeake	580	207	0	630	535	633	536	464	496	410	-86	-17.34%
Emporia	34	38	42	30	16	13	16	18	15	7	-8	-53.33%
Franklin	22	15	30	26	26	26	20	19	33	26	-7	-21.21%
Hampton	464	630	1,108	880	566	567	578	524	520	406	-114	-21.92%
Newport News	1,193	1,256	1,227	1,299	984	962	869	780	690	502	-188	-27.25%
Norfolk	782	1,742	1,522	1,630	1,440	1,218	1,143	1,024	1,021	1,076	55	5.39%
Poquoson	5	5	7	6	6	10	9	4	10	9	-1	-10.00%
Portsmouth	610	770	680	649	504	588	418	355	318	358	40	12.58%
Suffolk	188	286	152	182	156	143	121	148	126	138	12	9.52%
Virginia Beach	719	870	955	864	814	773	772	601	590	654	64	10.85%
Williamsburg	30	16	24	18	13	22	24	14	20	12	-8	-40.00%
Christopher Newport University PD	0	0	0	2	0	0	0	3	2	0	-2	-100.00%
Hampton University PD	1	2	2	4	0	3	3	1	1	0	-1	-100.00%
Norfolk State University PD	0	9	20	16	14	9	6	4	6	9	3	50.00%
Thomas Nelson Community College	0	0	2	0	2	0	0	0	0	0	0	
Virginia State University PD	6	2	3	2	3	1	1	7	3	5	2	66.67%
William & Mary College PD	0	1	0	4	0	0	3	0	2	0	-2	-100.00%

## Analysis of 2008 Virginia Motor Vehicle Theft Statistics

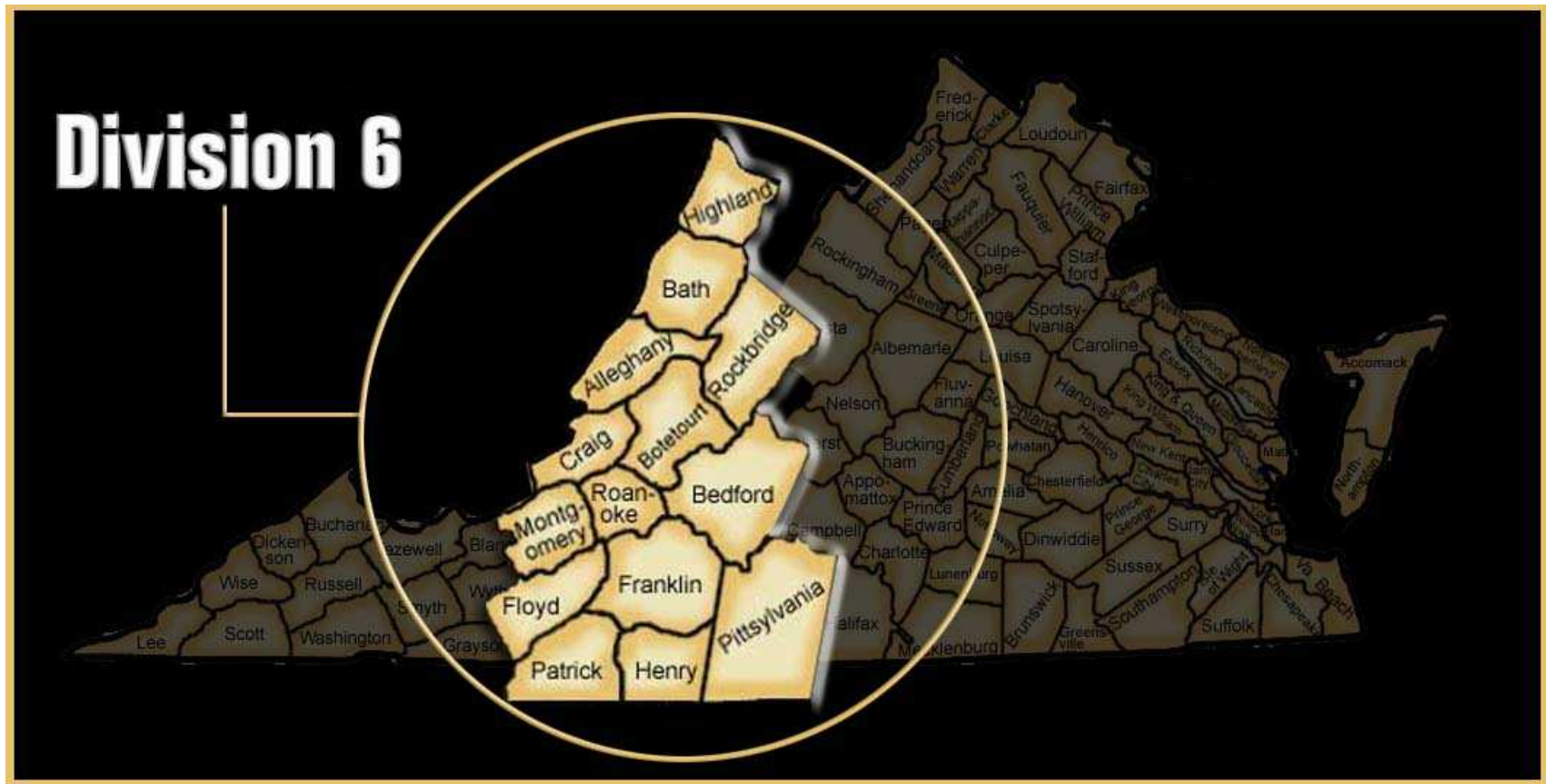
Area	1999 Thefts	2000 Thefts	2001 Thefts	2002 Thefts	2003 Thefts	2004 Thefts	2005 Thefts	2006 Thefts	2007 Thefts	2008 Thefts	Differ- ence	% Change
Old Dominion Campus PD	4	0	8	3	5	3	6	1	3	6	3	100.00%
Norfolk Airport Authority	4	2	4	3	2	3	0	0	0	4	4	
TOTAL	5,510	6,260	6,179	6,619	5,438	5,324	4,928	4,355	4,273	3,964	-309	-7.23%

There were 309 fewer reported Motor Vehicle Thefts in Division 5 in 2008 than in 2007, a 7.23% decrease. This was the largest decrease in absolute numbers of any of the Virginia State Police divisions.

The largest decreases in absolute numbers of thefts were posted by Newport News (188 thefts, 27.25%), Hampton (114 thefts, 21.92%) and Chesapeake (86 thefts, 17.34%).

The largest increases were in Virginia Beach (64 thefts, 10.85%), Norfolk (55 thefts, 5.39%) and Portsmouth (40 thefts, 12.58%).





**DETAIL BY AREA FOR DIVISION 6 - VIRGINIA MOTOR VEHICLE THEFT**

Area	1999 Thefts	2000 Thefts	2001 Thefts	2002 Thefts	2003 Thefts	2004 Thefts	2005 Thefts	2006 Thefts	2007 Thefts	2008 Thefts	Difference	% Change
Alleghany Co. (Iron Gate)	10	9	9	16	14	9	6	8	6	7	1	16.67%
Bath Co.	2	0	1	1	0	0	0	2	1	0	-1	-100.00%
Bedford Co.	27	20	35	62	45	35	36	35	45	45	0	0.00%
Botetourt Co.	22	29	27	27	21	19	27	22	16	17	1	6.25%
Craig Co.	3	2	3	1	0	2	3	2	1	1	0	0.00%
Floyd Co.	9	10	13	16	16	20	11	19	14	15	1	7.14%
Franklin Co. (Rocky Mount)	44	51	55	35	57	75	54	59	53	43	-10	-18.87%
Henry Co.	147	152	133	109	115	111	87	77	113	81	-32	-28.32%
Highland Co.	1	2	2	0	0	1	0	0	1	0	-1	-100.00%
Montgomery Co. (Blacksburg; Christiansburg)	90	85	96	64	93	87	95	107	83	106	23	27.71%
Patrick Co.	24	68	58	62	37	30	41	50	51	45	-6	-11.76%
Pittsylvania Co. (Chatham; Gretna; Hurt)	54	96	87	44	77	72	57	73	57	49	-8	-14.04%
Roanoke Co. (Vinton)	66	74	94	100	117	113	84	71	48	70	22	45.83%
Rockbridge Co. (Glasgow)	19	29	9	5	4	12	9	13	17	13	-4	-23.53%
Bedford	12	9	6	6	8	5	3	9	10	8	-2	-20.00%
Buena Vista	2	6	1	4	2	6	2	2	2	1	-1	-50.00%
Clifton Forge	3	2	3	5	4	5	2	0	1	1	0	0.00%
Covington	0	2	8	19	18	11	6	10	9	5	-4	-44.44%
Danville	141	33	133	103	134	119	113	112	111	103	-8	-7.21%
Lexington	5	3	4	2	3	8	6	2	4	1	-3	-75.00%
Martinsville	50	47	64	29	28	25	25	36	36	21	-15	-41.67%
Radford	13	0	0	0	0	0	32	28	22	17	-5	-22.73%
Roanoke	286	261	337	199	333	500	451	443	354	303	-51	-14.41%
Salem	43	35	35	39	37	43	37	32	39	36	-3	-7.69%
Ferrum College PD	0	1	1	0	1	0	0	0	0	0	0	
Radford Univ PD	0	3	2	1	3	1	0	0	0	1	1	
Virginia Tech PD	1	0	0	0	0	0	4	2	2	4	2	100.00%
VMI PD	1	0	0	0	0	0	0	0	2	0	-2	-100.00%
<b>TOTAL</b>	<b>1,054</b>	<b>1,029</b>	<b>1,216</b>	<b>949</b>	<b>1,167</b>	<b>1,309</b>	<b>1,191</b>	<b>1,214</b>	<b>1,098</b>	<b>993</b>	<b>-105</b>	<b>-9.56%</b>

There were 105 fewer Motor Vehicle Thefts in Division 6 in 2008 than in 2007, a 9.56% decrease. This was the largest decrease percentage wise of any of the Virginia State Police divisions.

The City of Roanoke had the largest decrease (51 thefts, 14.41%), followed by Henry County (32 thefts, 28.32%) and Martinsville (15 thefts, 41.67%).

The largest increases in Division 6 were in Montgomery County, including Blacksburg and Christiansburg (23 thefts, 27.71%) and Roanoke County, including Vinton (22 thefts, 45.83%).



**DETAIL BY AREA FOR DIVISION 7 - VIRGINIA MOTOR VEHICLE THEFT**

Area	1999 Thefts	2000 Thefts	2001 Thefts	2002 Thefts	2003 Thefts	2004 Thefts	2005 Thefts	2006 Thefts	2007 Thefts	2008 Thefts	Difference	% Change
Arlington Co.	665	309	702	676	599	493	419	357	302	327	25	8.28%
Fairfax Co. (Herndon; Vienna)	1,230	311	527	1,353	1,502	1,415	1,137	1,482	1,284	1,140	-144	-11.21%
Loudoun Co. (Leesburg; Middleburg; Purcellville)	203	229	243	220	243	212	259	266	255	220	-35	-13.73%
Prince William Co. (Quantico; Dumfries; Occoquan; Haymarket)	565	695	778	721	828	895	677	695	651	672	21	3.23%
Alexandria	706	293	702	736	621	475	399	389	378	374	-4	-1.06%
Fairfax	62	49	40	0	7	0	0	30	40	24	-16	-40.00%
Falls Church	36	0	71	52	45	42	37	26	26	21	-5	-19.23%
Manassas	119	154	151	130	136	141	124	123	106	87	-19	-17.92%
Manassas Park	30	35	50	44	42	41	15	45	37	21	-16	-43.24%
George Mason U PD	3	7	6	13	20	6	7	2	4	5	1	25.00%
NOVA Comm Clg PD	0	1	1	4	7	2	1	2	0	0	0	
Metro Wash Airport Authority	37	59	107	71	61	62	111	68	124	84	-40	-32.26%
<b>TOTAL</b>	<b>4,634</b>	<b>2,142</b>	<b>3,378</b>	<b>4,020</b>	<b>4,111</b>	<b>3,784</b>	<b>3,186</b>	<b>3,485</b>	<b>3,207</b>	<b>2,975</b>	<b>-232</b>	<b>-7.23%</b>

There were 232 fewer reported Motor Vehicle Thefts in Division 7 in 2008 than in 2007, a 7.23% decrease.

Fairfax County, including Herndon and Vienna, had the largest decrease (144 thefts, 11.21%), followed by the Metropolitan Washington Airport Authority (40 thefts, 32.26%).

Arlington County had the largest increase (25 thefts, 8.28%), followed by Prince William County, including Quantico, Dumfries, Occoquan and Haymarket (21 thefts, 3.23%).